



**Ramsey County Parks and  
Recreation Department**  
2015 North Van Dyke Street  
Maplewood, MN 55109-3796

*Printed on Quintessence Remarque recycled paper  
50% recycled, 10% post consumer waste  
Rev. 4/02*

# Hiking and Biking Trail Information



*For All Seasons*

# Ramsey County Trails

## GENERAL INFORMATION

This brochure shows several systems of paved trails suitable for hiking and/or biking within Ramsey County. The maps include trails within parks as well as connecting off-road trails. They include city, county and state trails which are connected. The maps are not intended to include all trails within Ramsey County, nor do they include non-paved trails suitable for hiking. More detailed maps of paved and non-paved trails are available for individual parks.

## TRAIL USE GUIDELINES

- Bikers must yield to pedestrians/walkers/hikers.
- Bikers should pass pedestrians on left and announce approach on left before passing.
- Be courteous to others while using trails.
- Observe (where posted) directional signs and speed limits.

## TRAIL RULES

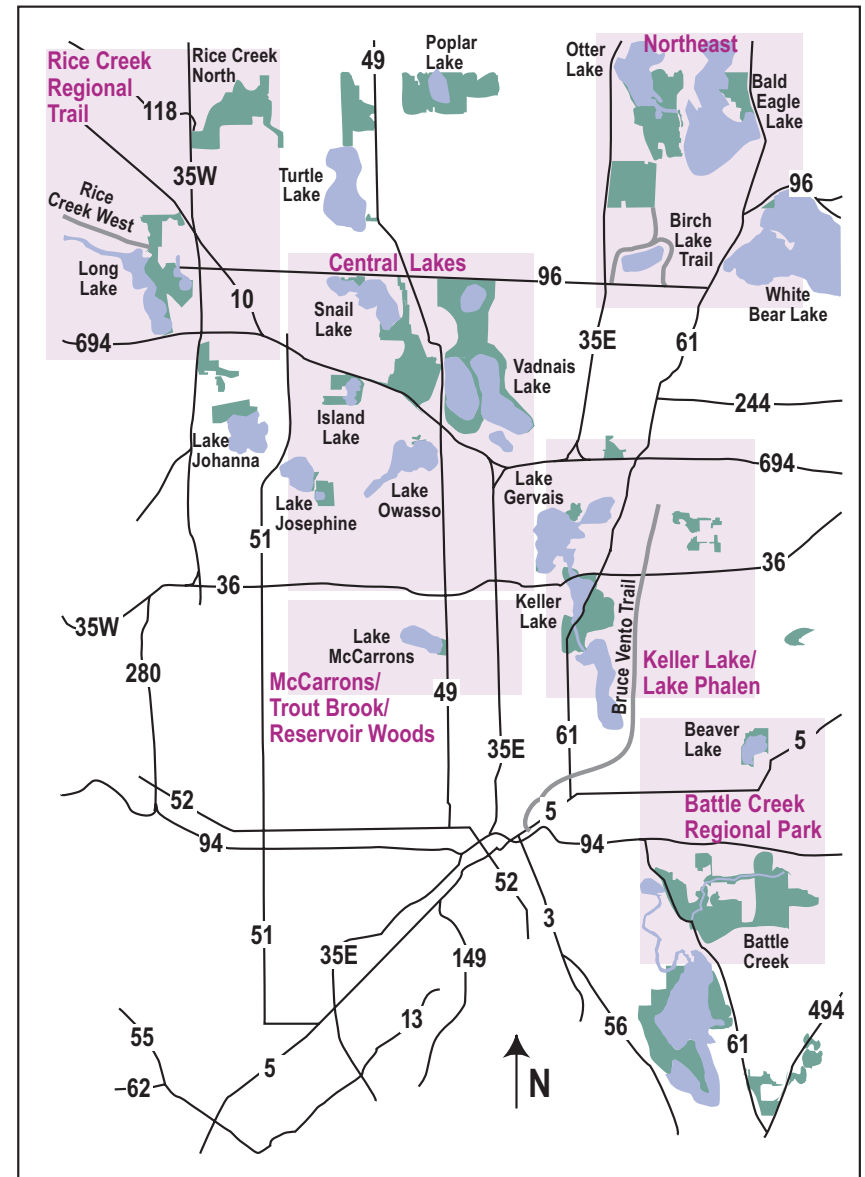
- PARK HOURS: 1/2 hour before sunrise to 1/2 hour after sunset.
- No motorized vehicles on trails.
- No unleashed pets on trails; owners must clean up pet feces and dispose of in a sanitary manner.
- Bikes allowed on paved trails only.

NOTE: Mountain bikes are allowed only at Battle Creek Regional Park (Winthrop Street site). Off-leash dog areas are provided at Battle Creek Regional Park, Rice Creek North Regional Trail and Reservoir Woods.

## TRAIL PATROL

Trails are patrolled by the Ramsey County Sheriff's Department and municipal police. For trail patrol concerns, call 484-1312; for trail emergencies call 911.

Trails within each of the shaded areas below are illustrated in the maps that follow.



RAMSEY COUNTY PARKS AND RECREATION DEPARTMENT

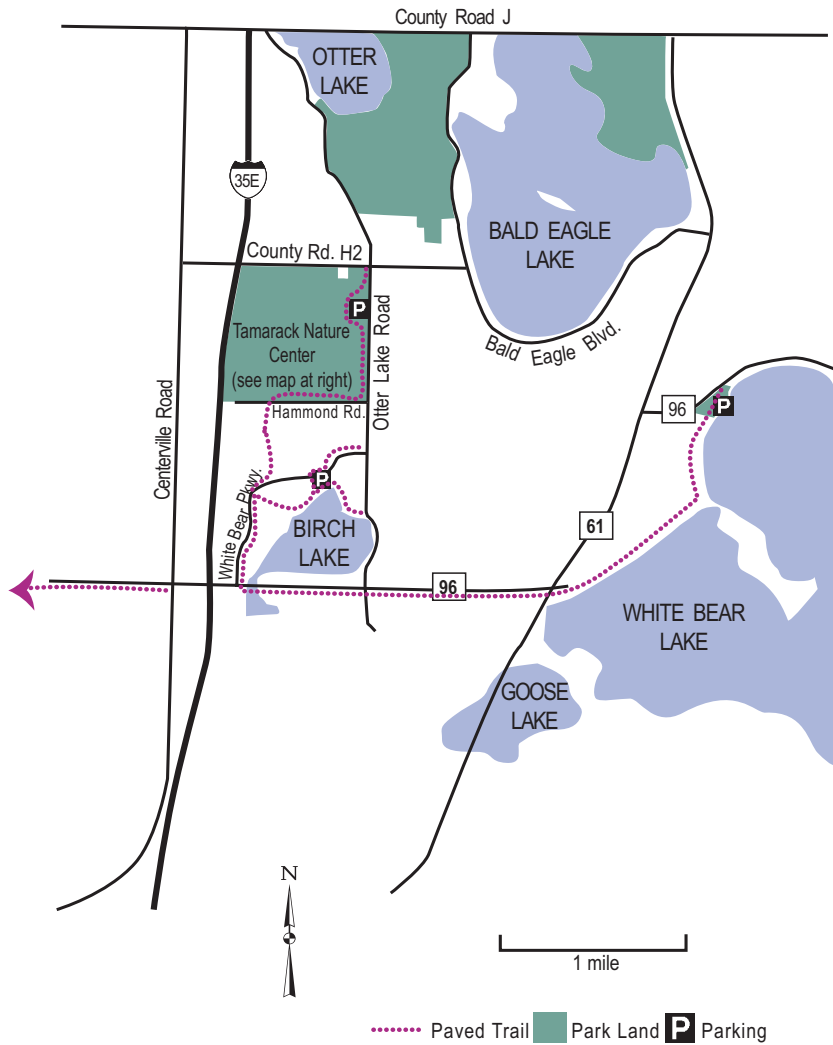
### ADMINISTRATIVE OFFICES

2015 North Van Dyke Street  
Maplewood, MN 55109-3796

For more information on Ramsey County Parks and Recreation facilities or services, call (651) 748-2500 or visit our website at [www.co.ramsey.mn.us/parks](http://www.co.ramsey.mn.us/parks).

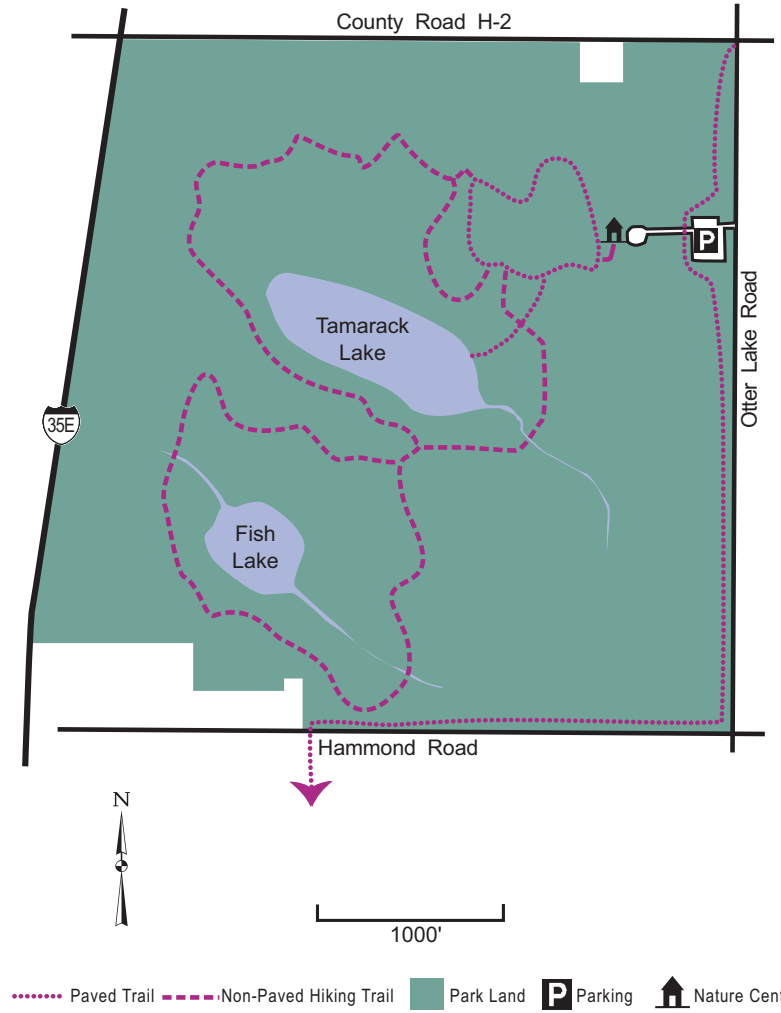
# Northeast

**Areas included:** Birch Lake Regional Trail, Bald Eagle-Otter Lakes Regional Park, White Bear Lake County Park



# Tamarack Nature Center

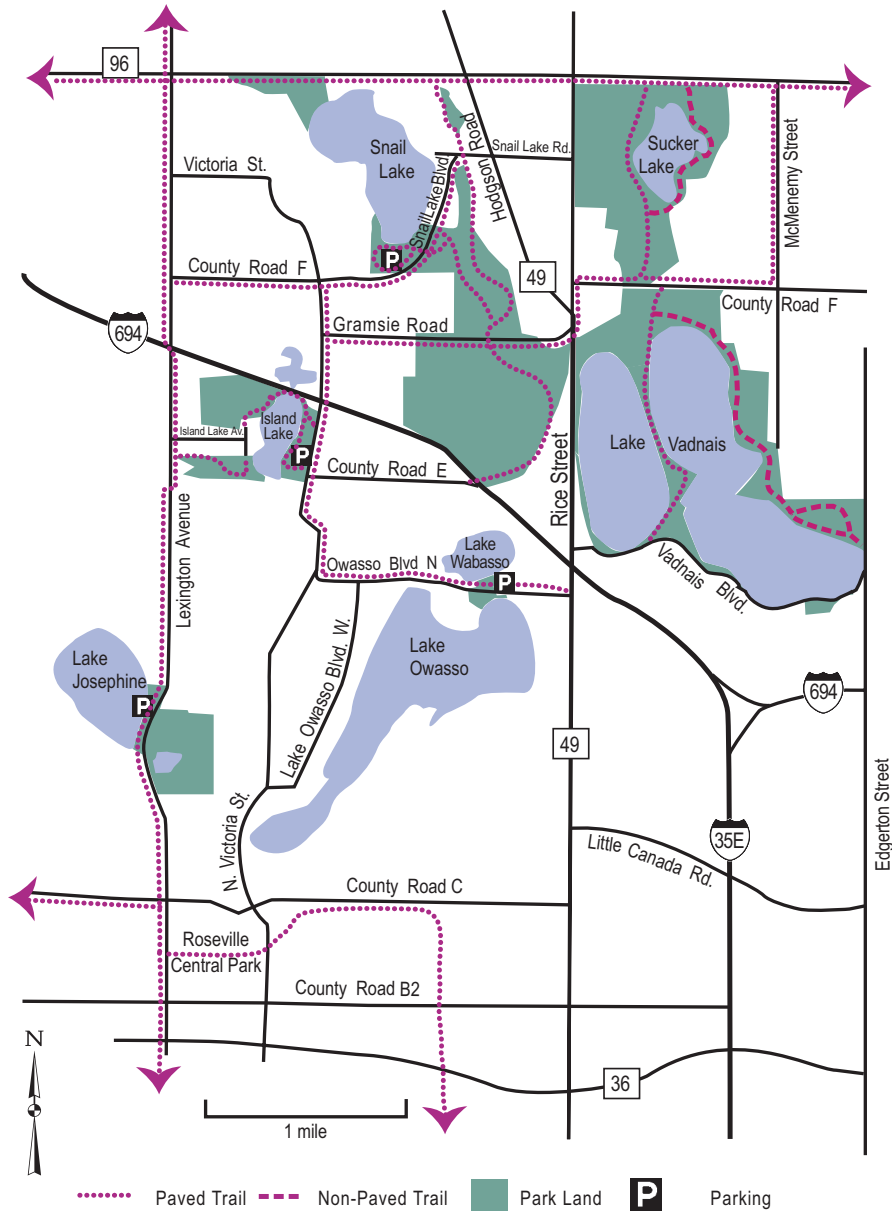
Note: Trails within Nature Center limited to hiking.  
Biking permitted on trails adjacent to Hammond Road and Otter Lake Road.



Pets, bikes, motor vehicles or in-line skating are not permitted on Tamarack's trails.

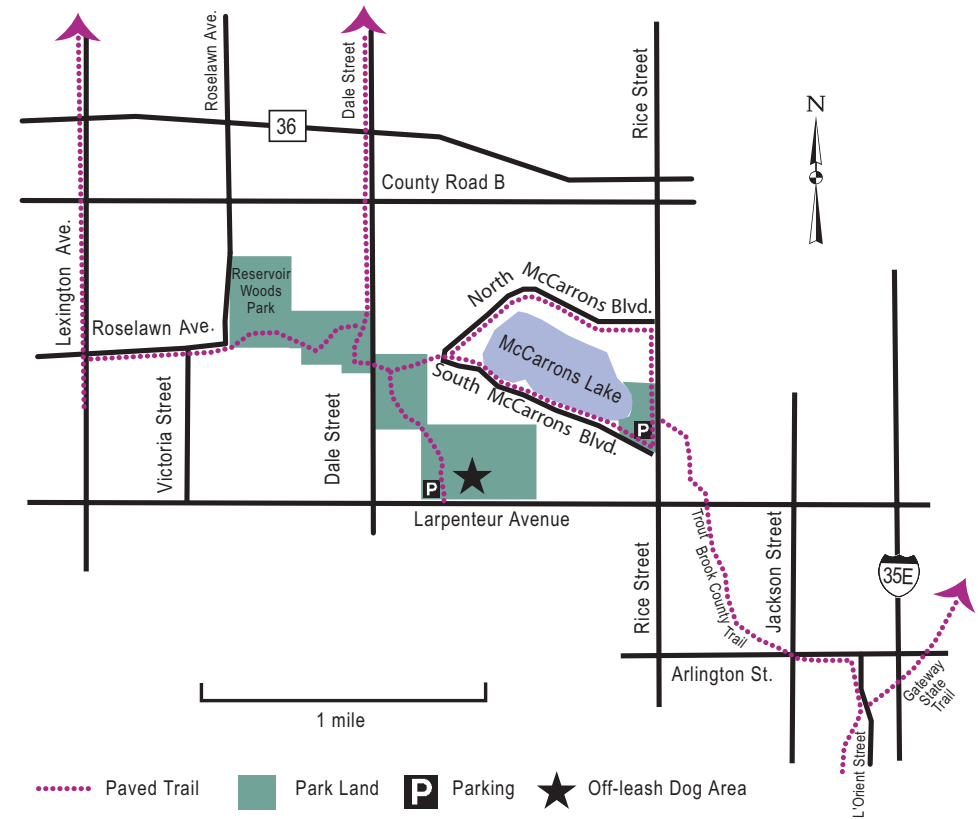
# Central Lakes

**Areas included:** Vadnais-Snail Lake Regional Park, Sucker Lake, Lake Vadnais County Park, Lake Owasso County Park, Island Lake County Park, Lake Wabasso County Park, Lake Josephine County Park, Highway 96 Regional Trail



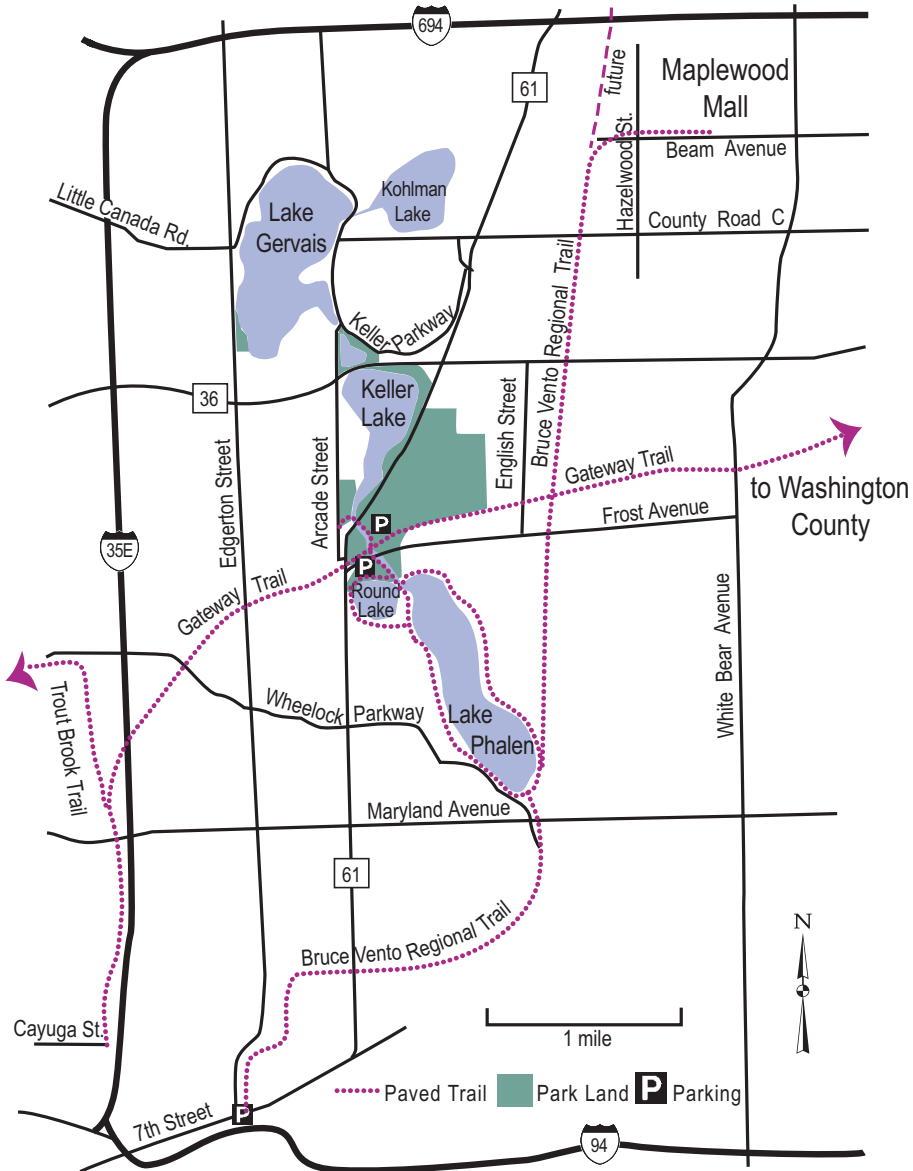
# McCarrons/Trout Brook/Reservoir Woods

**Areas included:** Lake McCarrons County Park, Trout Brook County Trail, Reservoir Woods Park



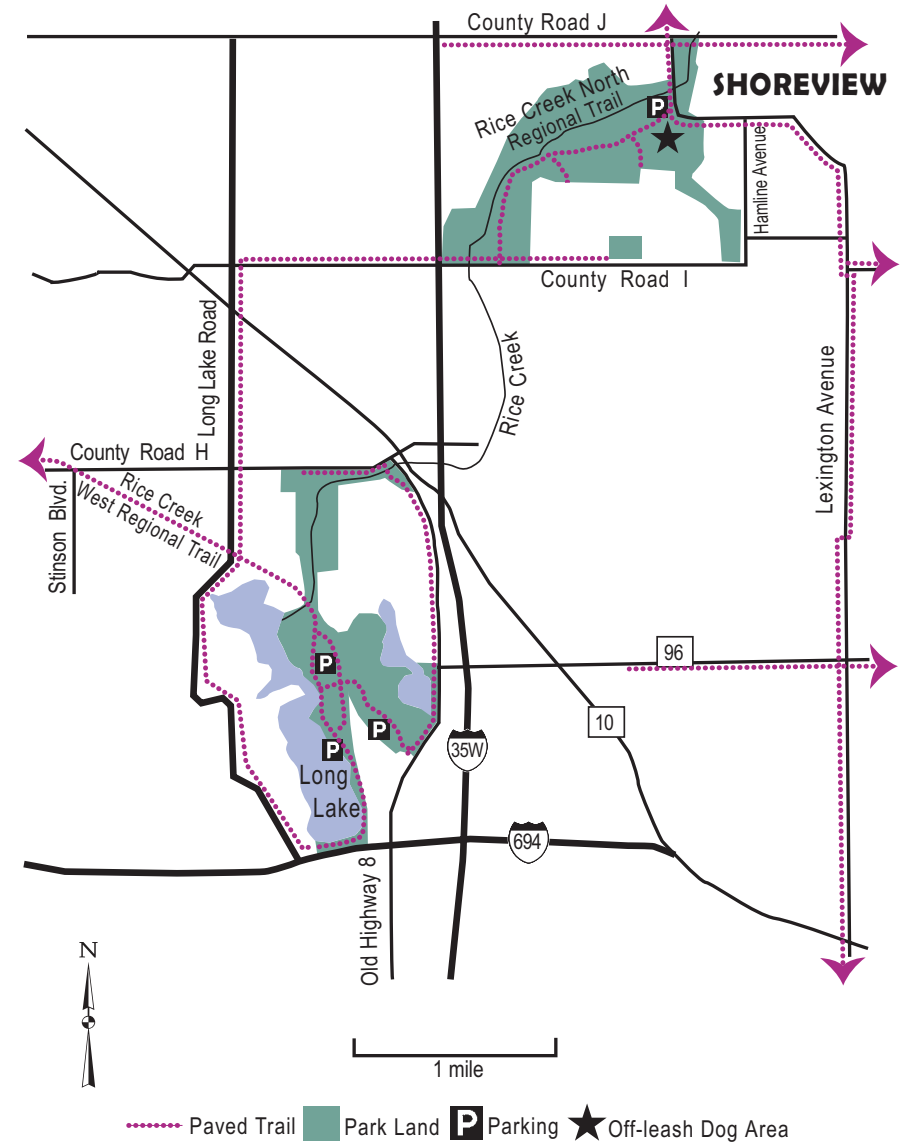
# Keller Lake/Lake Phalen

**Areas included:** Lake Gervais County Park, Kohlman Lake, Round Lake, Lake Phalen Regional Park, Keller Regional Park, Bruce Vento Regional Trail, Gateway State Trail



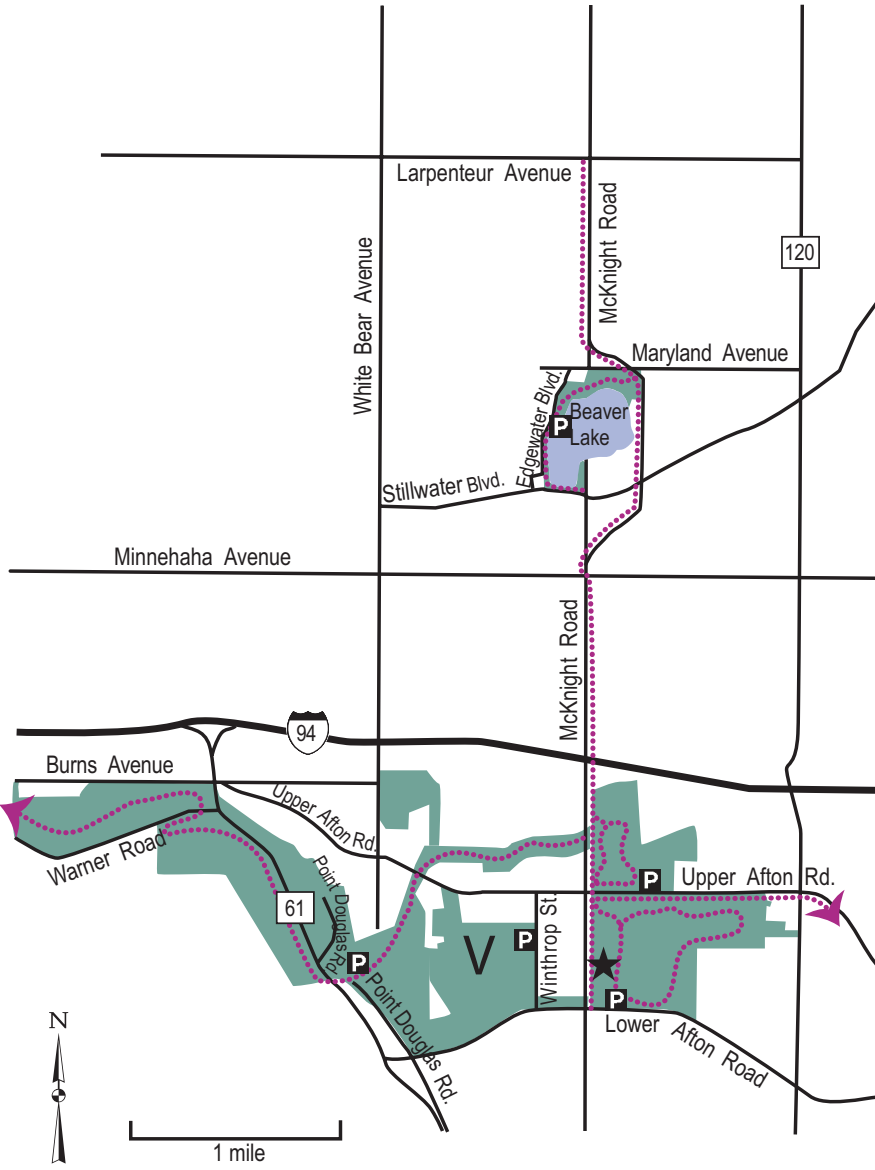
# Rice Creek Regional Trail

**Areas included:** Rice Creek West and North Regional Trails, Long Lake Regional Park



# Battle Creek Regional Park

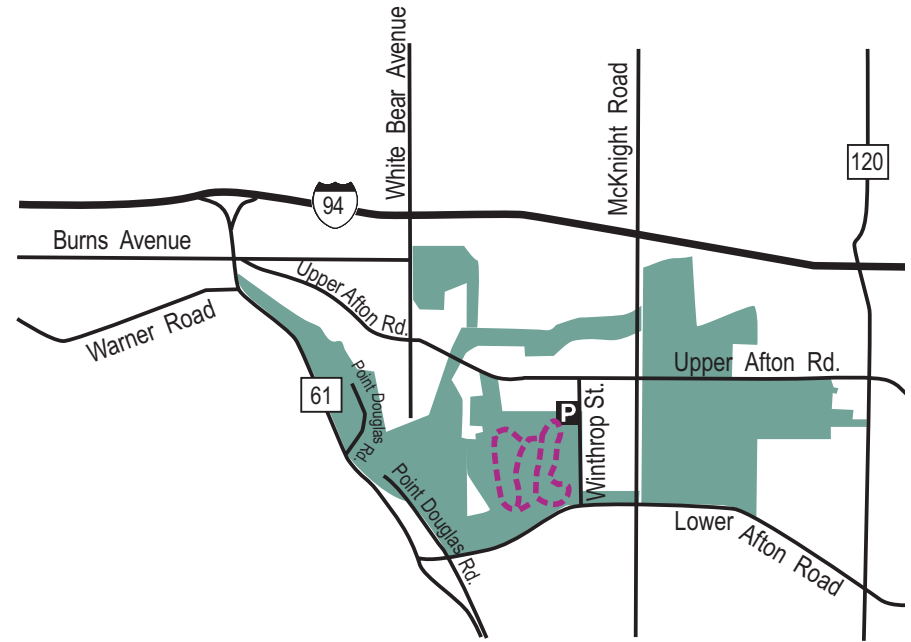
**Areas included:** Battle Creek Regional Park, Beaver Lake County Park



- - - - - Paved Trail  
  Park Land  
 **P** Parking  
 ★ Off-leash Dog Area  
 **V** Mountain Biking

# Battle Creek - Mountain Biking

**Areas included:** Battle Creek Regional Park (Winthrop Street site)



1 mile

- - - - - Non-Paved Trail  
  Park Land  
 **P** Parking