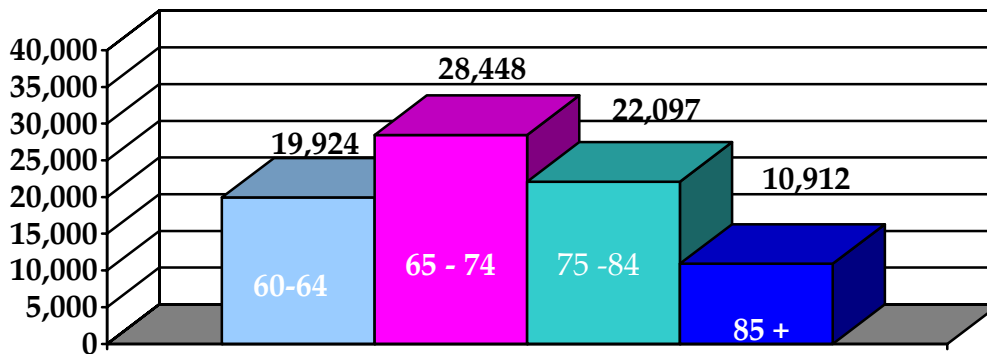


ELDERLY

A. Elderly in Ramsey County

Twelve percent (12%) of the residents of Ramsey County are over the age of 65. The State Demographer estimates that there are 61,457 Ramsey County residents 65 years of age or older¹. This is an increase of about 5,000 from the 2000 Census. The increase happened largely amongst individuals 85 and older. That number increased from 7,806 to 10,912 in the 2005 estimate, an almost 40% increase.

Illustration 1: There were an estimated 61,457 individuals 65 and older in Ramsey County

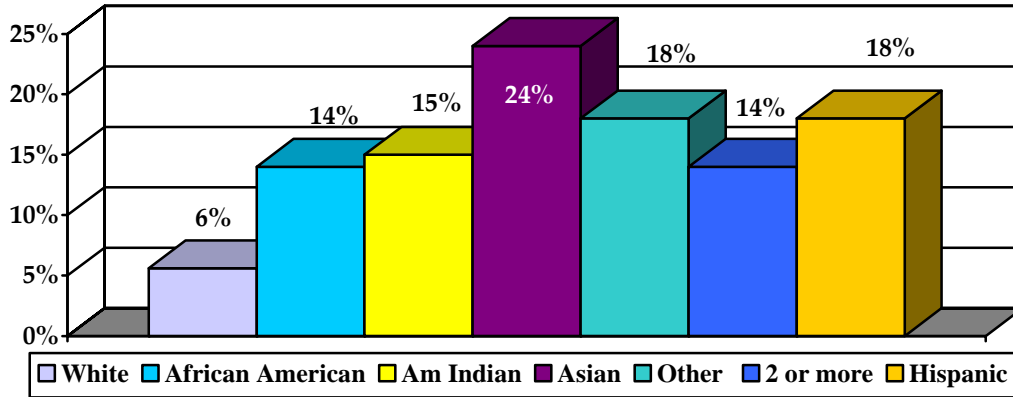


7.8% of the elderly were considered to be living in poverty in the 2000 Census². Racial and ethnic diversity among Ramsey County older adults is small but growing.

¹ Minnesota Population Projections, Minnesota State Demographic Center, June 2007.

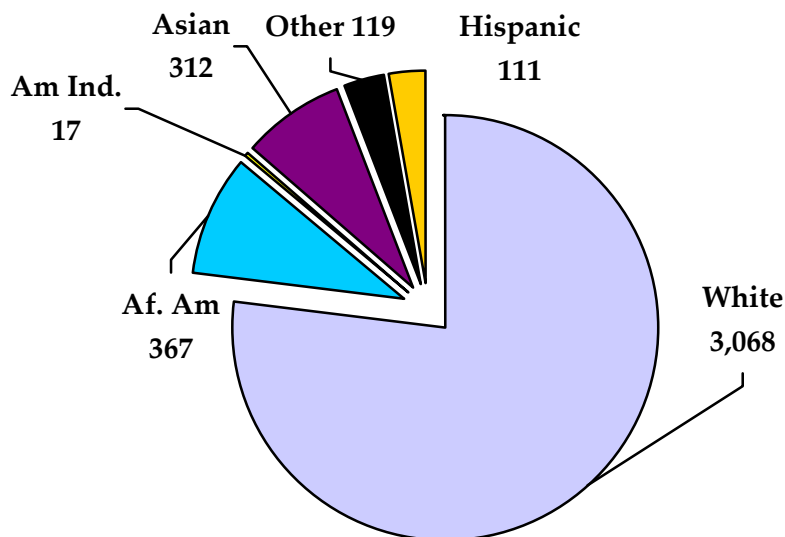
² Poverty rates are determined from sample

Illustration 2: Poverty rates for elderly, while 7% overall, vary by racial/ethnic groups



Several thousand Ramsey County seniors (3,786³) live in poverty. One out of four Ramsey County seniors are considered to have limited income. For example, 25% have income less than 200% of the federal poverty level for their household size (about 13,700 people). In 2000, the poverty level for one person was an income at or below \$8,350. Compared to all seniors, Ramsey County seniors of color are overrepresented in poverty. In the Southeast Asian community, almost one in four elderly are in poverty. However, because the number of minority elderly is small, the elderly who are eligible for Ramsey County's services are predominantly White.

**Illustration 3:
Numbers of individuals 65 and older living in poverty**



³ Poverty rates are determined from sample data and the numbers are smaller than overall census information. 2000 Census, U.S. Bureau of the Census.

B. Who are the people we serve?

Men and women who are eligible for services from Ramsey County include:

- Those 65 years or older who are low income and need nursing home-level care but want to continue living in the community.
- Elderly adults in their homes needing help getting regular nutritious meals.

C. What programs do we offer?

Types of Services	What's included in this?	What we intend to accomplish
In-Home and Supportive Services (See Section 1, Page 45)	<ul style="list-style-type: none">• Homemaking, nursing, home adaptations, transportation, etc.	<ul style="list-style-type: none">• Enable elderly to remain in their own homes
Home Delivered Meals	<ul style="list-style-type: none">• Daily lunches	<ul style="list-style-type: none">• Provide good nutrition to individuals who are home-bound

D. Specific Programs

Section 1: In-Home and Supportive Services

Types of Service	What's included in this?	What we intend to accomplish
PreAdmission Screening	<ul style="list-style-type: none"> • Assessment of a person's ability to live independently 	<ul style="list-style-type: none"> • Ensure that nursing home placements are necessary and there are no viable community options.
In Home Services - Alternative Care Grant/ Elderly Waiver (AC/EW)	<ul style="list-style-type: none"> • Home delivered meals • Skilled nurse visits • Homemaker aides • Assisted living • Home Health Aides • Adult Day Care • Transportation • Chore services • Personal care • In-home nursing • Foster care • Home modifications or adaptations • Respite care • Medical or independent living supplies and equipment • Companion Services • Consumer Directed Community Support 	<ul style="list-style-type: none"> • To make it possible for people to stay out of nursing homes
Meals on Wheels	<ul style="list-style-type: none"> • Daily meals to homebound individuals 	<ul style="list-style-type: none"> • To provide good nutrition

Policy changes in the elderly service system have resulted in a changed role for the Community Human Services Department. Individuals who are eligible for in-home support services now have the option of getting those services through their health plans. The Department continues to provide care for individuals who are not on Medical Assistance, individuals who have chosen Ramsey County as their provider and for all Blue Cross/Blue Shield clients through a contract. Since early in 2007, elderly citizens who are on medical assistance have been increasingly getting services through their health plans.

The service package offered by the County includes a range of services to assist with daily living activities and with the person’s personal care. Activities such as shopping, transportation, housekeeping/chores or medication management make day-to-day living possible. The personal care activities that can be provided include bathing, dressing, toileting or transferring people.

Numbers Served

Two programs, the Alternative Care program and the Elderly Waiver program provide in-home care to seniors. About 1,450 elderly men and women were served in 2006 under these two programs.

Services	2003	2004	2005	2006
Alternative Care (AC)	655	722	676	555
Elderly Waiver (EW)	1,026	1,110	1,167	893
TOTAL	1,681	1,832	1,843	1,448

Characteristics of individuals served

The elderly who are using the service packages through Ramsey County are more likely to be white females who are 75 years and older. Many experience multiple health problems.

Illustration 4:
Gender of individuals receiving in-home services (AC/EW)
 (N = 1,448)

76% of individuals served by Ramsey County are women

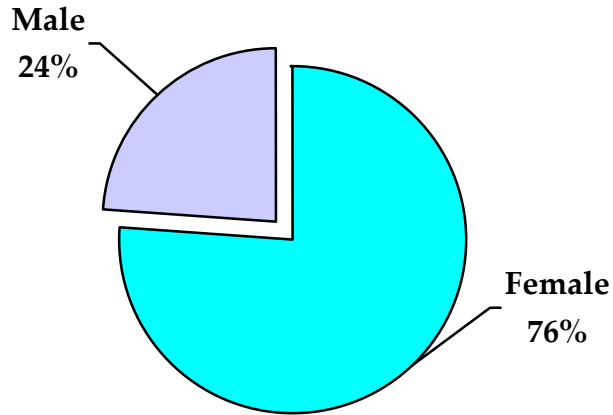


Illustration 5:
Ages of elderly who are receiving service from Ramsey County
 (N = 1,443)

74% of individuals served by Ramsey County are over 75 years old.

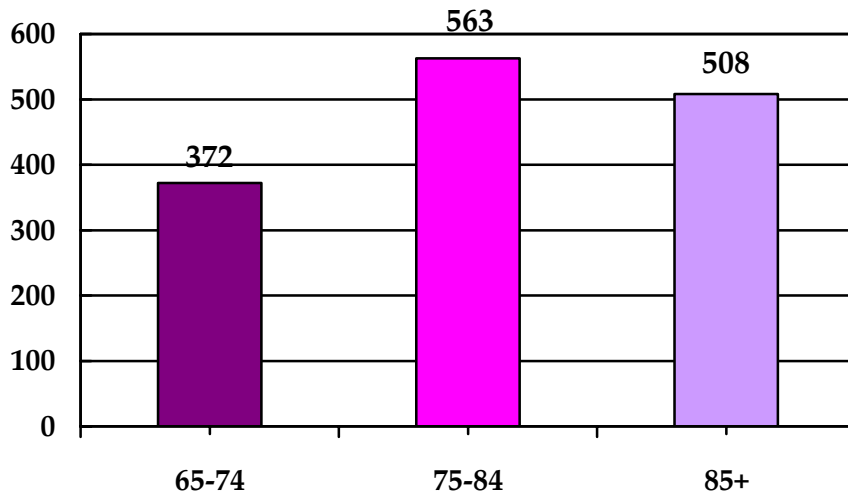
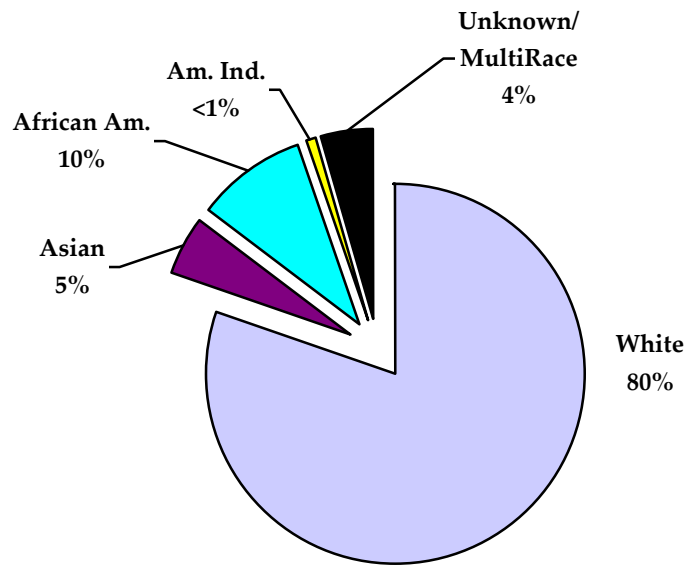


Illustration 6:
Race of elderly receiving in-home services (AC/EW)
(N = 1,448)



About 1% of individuals receiving services have Hispanic heritage.