

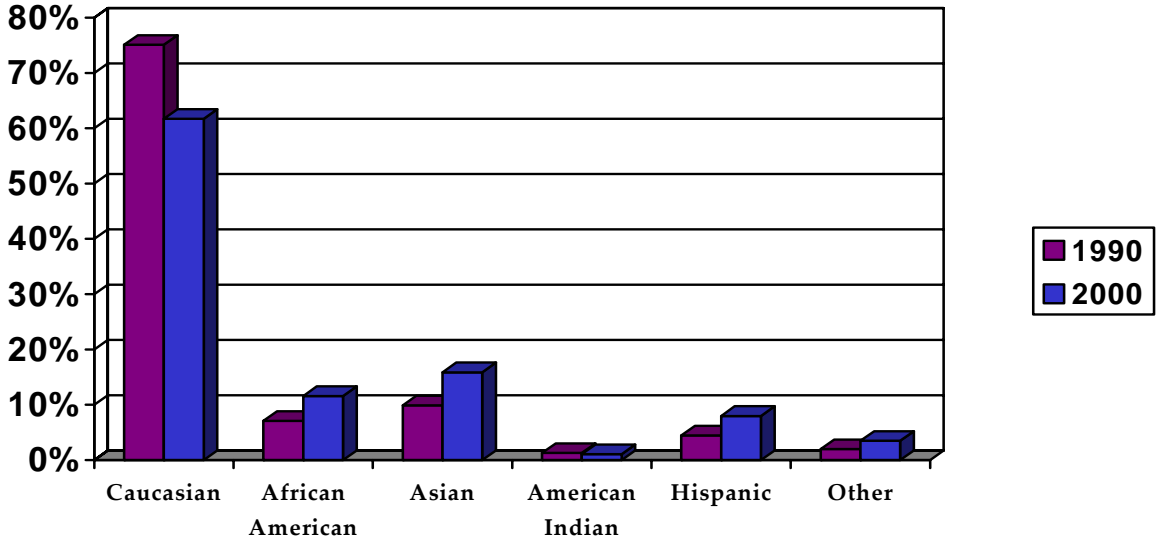
# CHILDREN



There were an estimated 124,154 children in Ramsey County in the 2004. Children in Ramsey County are more likely to be poor. The State Demographer estimates that 14% are living in poverty compared to 10% statewide.

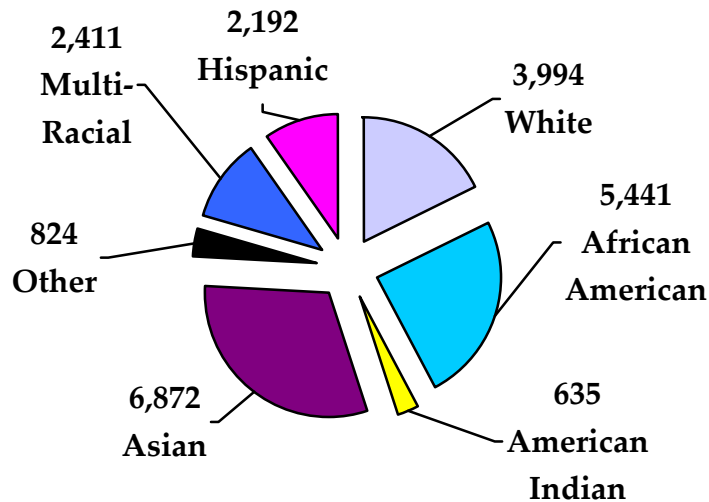
While most children in Ramsey County are White, there has been significant and continued growth among the young minority population. In 1990 the proportion of children of color in the County was 25%. The 2000 census saw that figure rise to 38%. This increase is largely accounted for by an increase in African American and Asian children as Illustration 1 shows.

**Illustration 1**  
**Race of Children Under 18**



While children of color are 38% of the county population, they comprise 72% of all the children who are living in poverty in Ramsey County.

**Illustration 2**  
**Numbers of Children Living in Poverty**



### **Children with mental health problems**

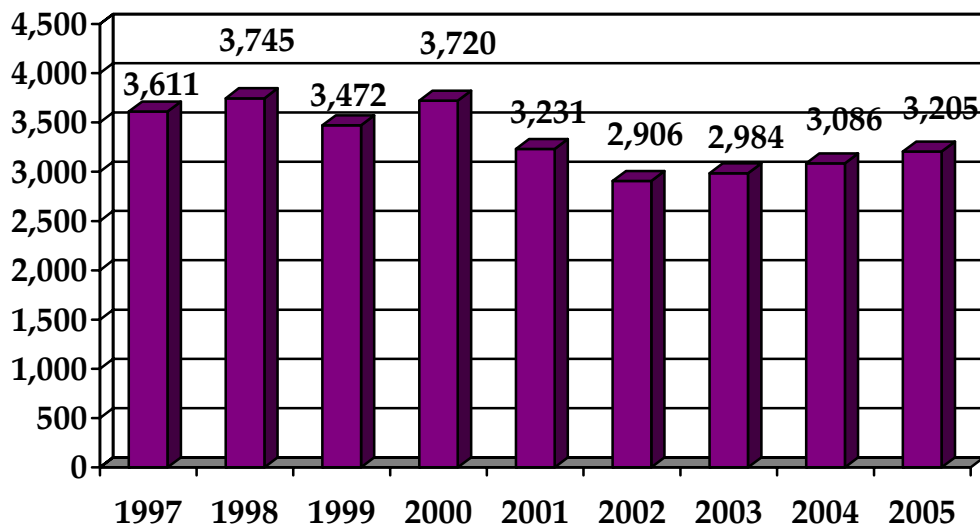
It is estimated that 5% of all children in the United States have a severe emotional disturbance. In Ramsey County, that means that there is an estimated 6,500 children in need of mental health services.

### **Children who are in trouble with the law**

The rate of children arrested for serious crimes has declined in Ramsey County over the last few years. In 1992, 2,869 children were arrested for serious crimes, resulting in a rate of 63 arrests per 1,000 children. By 2001, that rate had declined to 1,933 arrests and a rate of 33 arrests per 1,000 children. In 2005, there were 1,748 arrests of juveniles for serious crimes.

Illustration 3 on the next page shows that the number of offenses that were either admitted or sustained in Juvenile Court has been slowly increasing since 2002.

**Illustration 3: Offenses Admitted or Sustained in Juvenile Court**



Ramsey County Human Services serves children who meet certain criteria. This includes:

- Children in danger from abuse and neglect
- Children with a mental illness
- Children in trouble with the law
- Children without families able to raise them.

### **Children in danger from abuse or neglect**

Children who receive services have experienced physical abuse, neglect, or sexual abuse. Most of the children are referred to Child Protection Intake from schools, law enforcement, and other mandated reporters.

### **Children with mental illness**

Children with a serious mental health problem have behavior that interferes with their ability to learn and participate in the normal activities of childhood. Children experience depression, anxiety, disruptive behavior, and adjustment problems.

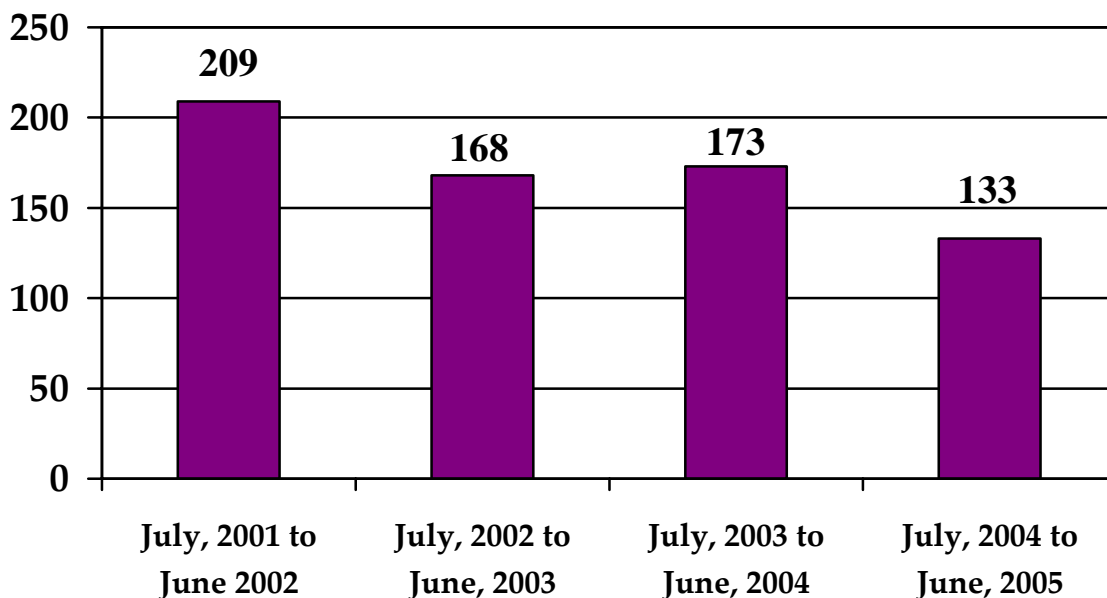
## Children in trouble with the law

Children who are in trouble with the law are served either by the Corrections Department or the Human Services Department. Human Services is typically involved with runaways and children who have a history of having been served by our department. This includes children who have been involved in the Child Protection system or received mental health services.

## Children whose families are unable to raise them

In some situations the courts determine that a child's parent cannot raise him/her. This happens when there is evidence of serious abuse and neglect, when parents have died, when there is no extended family to care for the child, or when other similar situations occur. In these cases, the courts call for the termination of parental rights and the removal of children from their care.

**Illustration 4:**  
**Annual Filings for Termination of Parental Rights**  
**State Counts: Ramsey County**  
**State Fiscal Year 2002-2005**





Types of Service	What's included in this?	What we intend to accomplish
<b>Children in need of protection</b> (See Page 10)	<ul style="list-style-type: none"> <li>• Assessment of risk of abuse or neglect</li> <li>• Programs that assist parents</li> </ul>	<ul style="list-style-type: none"> <li>• Ensure that children are safe and free from harm</li> </ul>
<b>Children with a mental illness</b> (See Page 14)	<ul style="list-style-type: none"> <li>• Identify and assess children in need of mental health service</li> <li>• Treatment for children diagnosed with mental illness</li> <li>• Case management</li> </ul>	<ul style="list-style-type: none"> <li>• Provide effective treatment and supports</li> <li>• Improve children's level of functioning</li> </ul>
<b>Children in trouble with the law.</b> (See Page 16)	<ul style="list-style-type: none"> <li>• Supervision of children</li> <li>• Appropriate services</li> </ul>	<ul style="list-style-type: none"> <li>• Improve children's pro-social skills</li> <li>• Children will not re-offend</li> <li>• Provide support to parents</li> </ul>
<b>Children whose families are unable to raise them</b> (See Page 18)	<ul style="list-style-type: none"> <li>• Adoption services</li> <li>• Foster care</li> <li>• Preparing children turning 18 in foster care to live on their own</li> </ul>	<ul style="list-style-type: none"> <li>• Provide nurturance and basic needs</li> <li>• Ensure that children grow up to be successful adults</li> <li>• Provide a permanent family for children</li> </ul>
<b>Child Care and Foster Care Licensing</b>	<ul style="list-style-type: none"> <li>• Recruit and license foster care and child day care</li> </ul>	<ul style="list-style-type: none"> <li>• Ensure the safety of children</li> <li>• Train and develop providers</li> </ul>



**Section 1: Children in need of protection**

<b>Types of Service</b>	<b>What's included in this?</b>	<b>What we intend to accomplish</b>
<b>Child Protection Intake</b>	<ul style="list-style-type: none"><li>• Screening reports of child maltreatment</li><li>• Responding to requests for services for children</li><li>• Investigating reports of abuse or neglect of a child</li><li>• Determining whether abuse or neglect is occurring</li><li>• Referring the child and/or family to appropriate services in the County system or in the community</li></ul>	<ul style="list-style-type: none"><li>• To ensure the safety of children.</li><li>• To enable parents to care for their children</li><li>• To ensure child well-being</li></ul>
<b>Child Protection Program/ Family Assessment</b>	<ul style="list-style-type: none"><li>• Providing case management services</li><li>• In-home parenting training</li><li>• Mental health or chemical dependency services for the parent</li><li>• Foster care for the child</li><li>• Medical or mental health treatment for the child</li><li>• Placement in a residential treatment setting for the child</li></ul>	<ul style="list-style-type: none"><li>• To ensure the safety of children.</li><li>• To enable parents to care for their children</li><li>• To provide a temporary or permanent safe home for children</li><li>• To ensure permanence</li><li>• To ensure child well-being</li></ul>

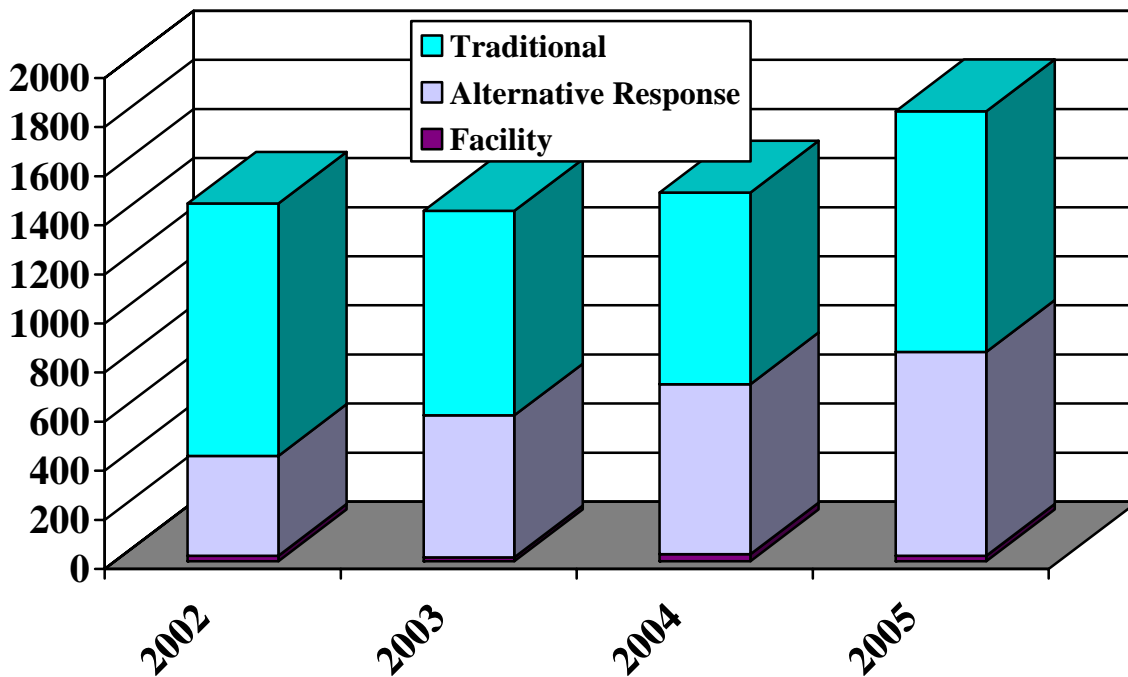
## Numbers served

The intake phone line for Children’s Services receives more than 20,000 calls a year. From all those calls, about 3,500 children in 2005 were in situations serious enough to need services. The following table shows the number of families receiving various services for the most recent four years.

Services	2002	2003	2004	2005
Maltreatment Reports	1,028	833	781	980
Alternative Response Intake (Family Assessment)	407	578	693	831
Facility Investigations	22	16	28	22
Total Investigations	1,457	1,427	1,502	1,833
Families Open for Child Protection Case Management	1,266	1,292	1,263	1,155
Alternative Response Case Management	407	578	736	880
Number of Children in Out-of-Home Placement	2,413	2,175	2,318	2,096

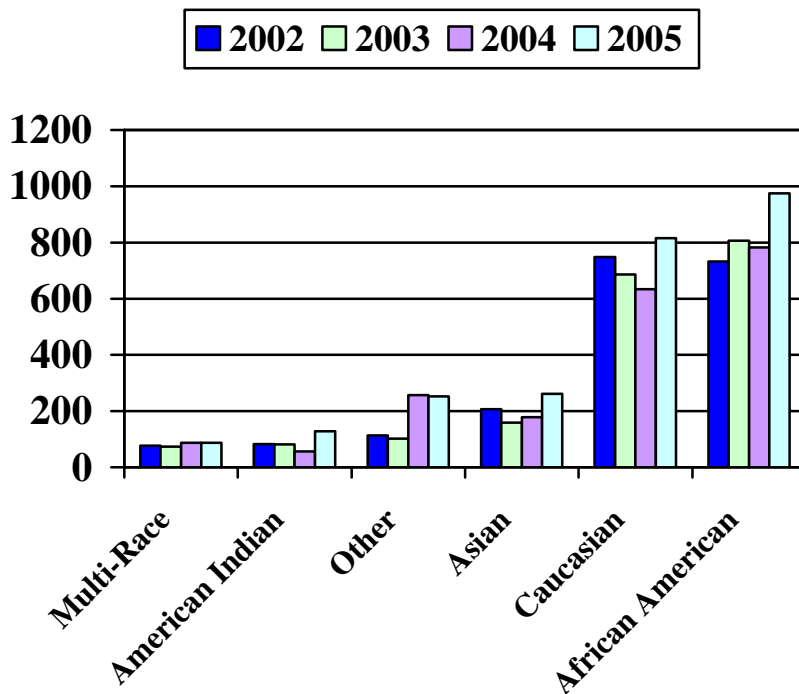
After remaining stable for several years, there was a 25% increase in the number of traditional Child Protection investigations in 2005 and a 20% increase in Alternative Response/Family Assessments. A small number of investigations are of facilities.

**Illustration 5: Number of child protection investigations/assessments between 2002 and 2005**



**Illustration 6: Number of victims in child protection investigations/assessments by race**

In 2005 there were 2,521 children involved in the 1,833 investigations/assessments conducted by CHS. The increase in the number of investigations and assessments is reflected in a substantial increase in the number of Caucasian and African American children. (See Illustration 6)

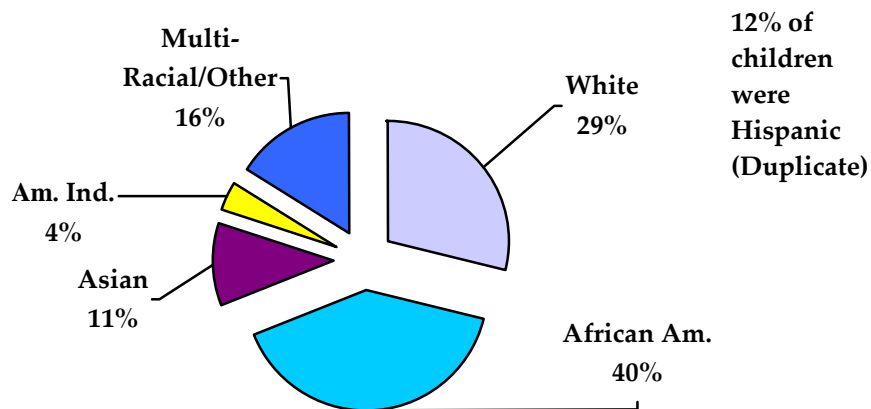


**Out of Home Placement**

Child Protection places children in out of home placement when it is necessary for the safety of the child. There were 3,287 placements in 2005, approximately 300 fewer than in 2004 and the lowest number in the last 5 years. Of these placements, 59% or 1,602 were made by Child Protection. Child Protection was mostly likely to place children either in family foster care (52%) or emergency shelter (43%).

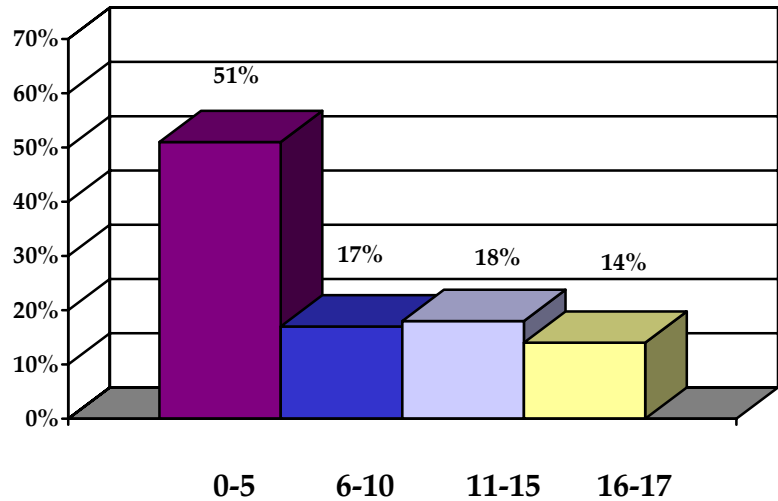
**Characteristics of Children Served in Child Protection**

**Illustration 7: Race of Children Receiving Child Protection Case Management (2005)**  
N=3,352

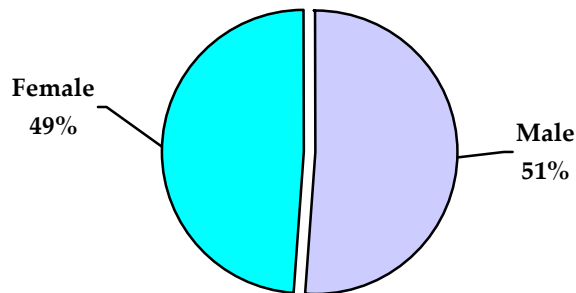


**Illustration 8: Age of Children receiving  
Child Protection Case Management (2005)**  
N=3,352

Illustrations 7 through 9 describe the characteristics of children who received Child Protection Case Management services. Most children were served in Intake and did not receive ongoing case management services. Case Management services are provided to families so that they will be able to become effective parents, and to assist them in connecting with appropriate community resources.



**Illustration 9: Gender of Children receiving  
Child Protection/Alternative Response  
Case Management (2005)**



## Section 2: Children with mental illness

Types of Service	What's included in this?	What we intend to accomplish
<b>Screening</b>	<ul style="list-style-type: none"> <li>• Screening of children in Child Protection and Delinquency</li> </ul>	<ul style="list-style-type: none"> <li>• Identify children in need of mental health services</li> </ul>
<b>Treatment</b>	<ul style="list-style-type: none"> <li>• Therapy</li> <li>• Medication Management</li> <li>• Residential Treatment</li> </ul>	<ul style="list-style-type: none"> <li>• Improve the child's capacity to function</li> </ul>
<b>Case Management</b>	<ul style="list-style-type: none"> <li>• Identification &amp; referrals to community support services</li> <li>• Counseling and guidance</li> </ul>	<ul style="list-style-type: none"> <li>• Improve the family's ability to meet the needs of a child with mental health problems</li> </ul>

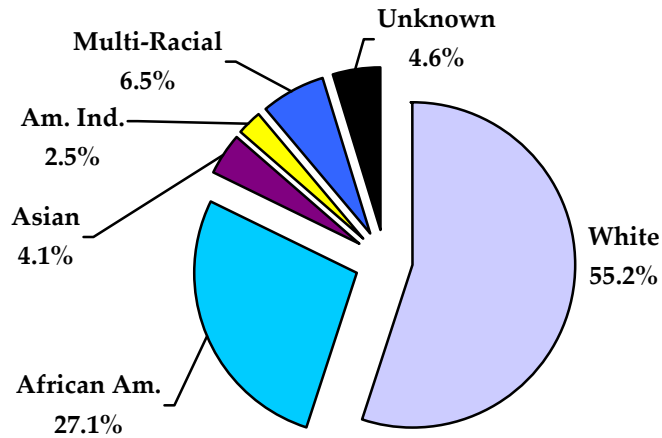
### Numbers Served

Services	2001	2002	2003	2004	2005
Children Open in Children's Mental Health Case Management	519	589	640	666	712

Beginning in 2004, children in Child Protection, Alternative Response, Guardianship/Adoption, and Delinquency, as well as with the Community Corrections Department, were all eligible for mental health screening. In the first 8 months of 2005, 868 children received mental health screening. Mental Health screening does not diagnose, it only indicates if a child may benefit from a more thorough assessment process to determine if therapy or treatment would be helpful. About 56% of children screened were referred for further assessment.

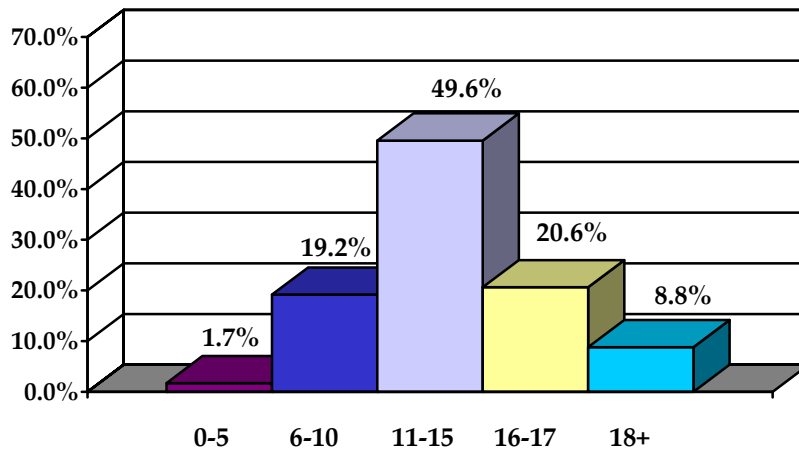
**Illustration 10:  
Race of Children receiving Mental Health Services  
N = 712**

Ramsey County Human Services provides children's Mental Health services in collaboration with community agencies.

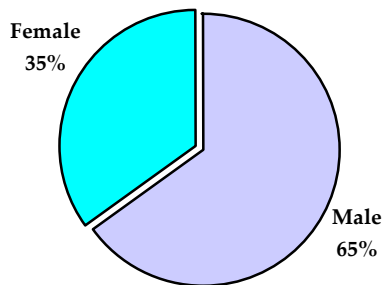


7.7% of children receiving mental health services are Hispanic

**Illustration 11: Age of Children receiving Mental Health services N=712**



**Illustration 12: Gender of Children receiving Mental Health services N = 712**



## Out of Home Placement

Children’s Mental Health places children primarily in response to a crisis or for a child to receive treatment. There were 3,287 placements in 2005. Of these placements, 160, or 6 % were made by Children’s Mental Health. Children are most likely to be placed in emergency shelter (33%) or a residential treatment program (28%).

## Section 3: Children in trouble with the law

Types of Service	What’s included in this?	What we intend to accomplish
<b>Case Management</b>	<ul style="list-style-type: none"> <li>Supervision of children on probation</li> <li>Referral to community agencies</li> </ul>	<ul style="list-style-type: none"> <li>Ensure that children do not reoffend</li> </ul>
<b>Community Services</b>	<ul style="list-style-type: none"> <li>Recreational programs</li> <li>Counseling</li> <li>School support services</li> </ul>	<ul style="list-style-type: none"> <li>Provide alternative activities and support for pro-social behaviors</li> </ul>

## Numbers Served

Services	2001	2002	2003	2004	2005
Families open in All Children Excel (ACE)	120	120	135	141	131
Children open in the Delinquency Unit**	681	661	637	609	642

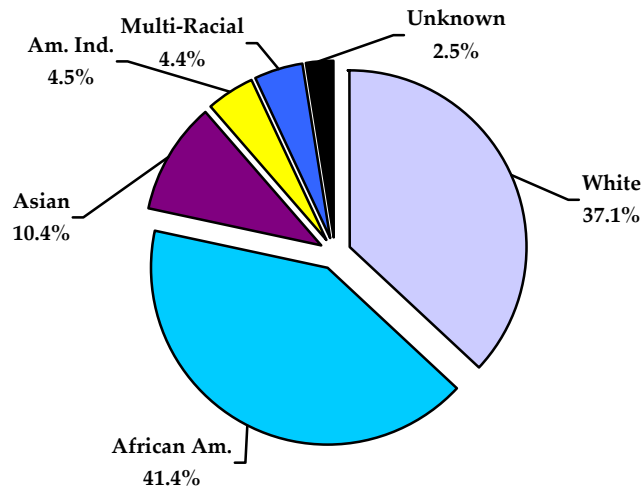
\*\*Children in the juvenile justice system are served either by the Corrections Department or Ramsey County Human Services. This reflects children served by Ramsey County Human Services only.

Human Services and the Corrections Department in Ramsey County provide services to children who are in trouble with the law. Human Services provides services to most runaways, elementary school truant’s and delinquents already involved with Human Services.

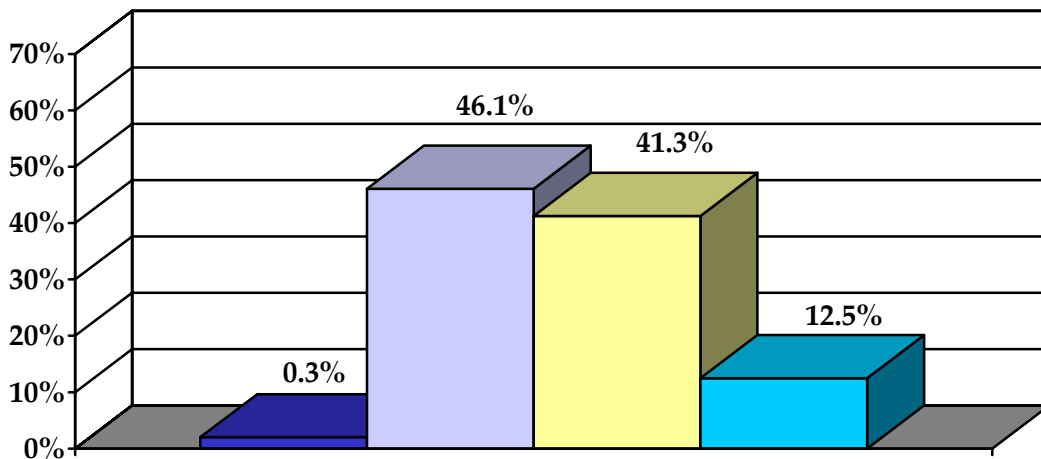
In addition, a program for serious juvenile offenders called the ACE (All Children Excel) project works with children who have committed a serious offence but are too young to be charged in court. The program works with the family to address a significant range of problems that have resulted in this behavior in a child under 10. This project is a joint effort of CHS, Public Health and the Corrections Department.

**Illustration 13: Race of Children receiving services for Delinquency from the Human Services Department  
N=642**

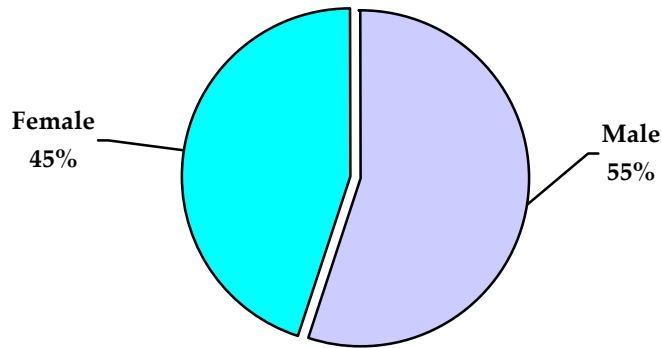
6.5% of children receiving services for delinquency are Hispanic



**Illustration 14: Ages of Children receiving Delinquency services N=642**



**Illustration 15: Gender of Children receiving Delinquency services N=642**



**Out of Home Placement**

Delinquency places children primarily in response to a crisis with the child’s behavior or for a child to receive treatment. There were 3,287 placements in 2005. Of these placements, 291 or 11% were made by Delinquency. Children are most likely to be placed in a correctional group home (52%) or an emergency shelter (27%).

**Section 4: Children whose families are unable to raise them**

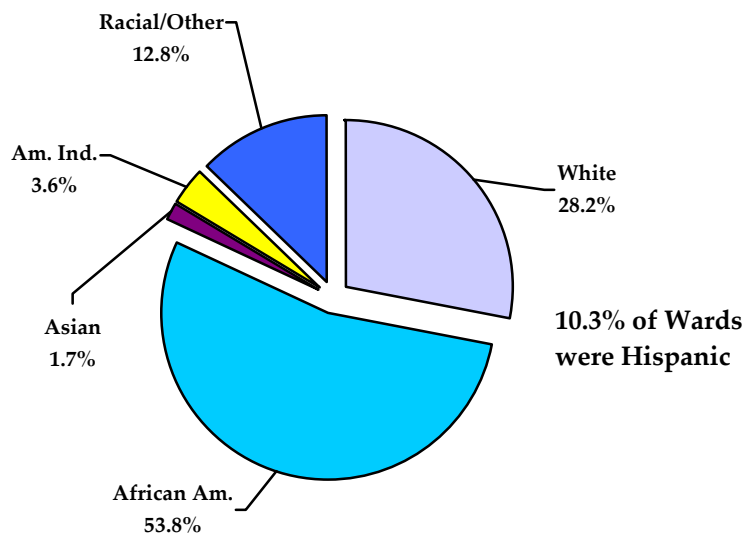
Types of Service	What’s included in this?	What we intend to accomplish
<b>Adoptions</b>	<ul style="list-style-type: none"> <li>• Recruitment of adoptive families</li> </ul>	<ul style="list-style-type: none"> <li>• Permanent homes for children</li> </ul>
<b>Foster Care</b>	<ul style="list-style-type: none"> <li>• Recruitment of foster care providers</li> <li>• Support and guidance for foster parents</li> </ul>	<ul style="list-style-type: none"> <li>• Stable foster care settings for children</li> </ul>
<b>Emancipation Services</b>	<ul style="list-style-type: none"> <li>• Training and support for adolescents who are in foster care or who have been as teens</li> </ul>	<ul style="list-style-type: none"> <li>• Successful transition to adulthood</li> </ul>

	2001	2002	2003	2004	2005
State Wards	620	625	572	537	476
Finalized Adoptions	74	99	94	83	111

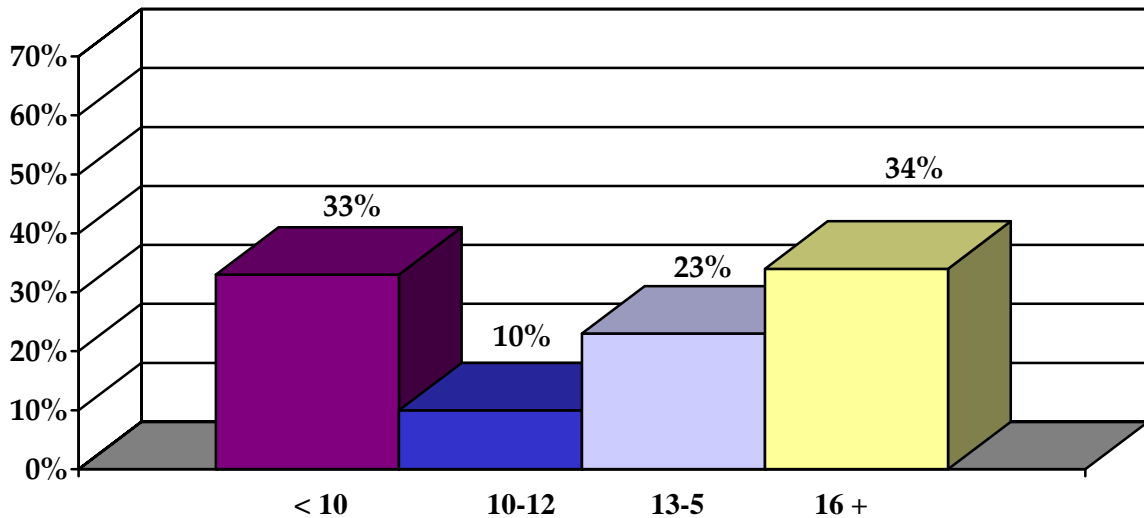
The number of children who are wards of the state has decreased in Ramsey County over the last 4 years. This is because there are fewer children who are losing their parental rights and there has been an increase in the number of children who have found permanent homes.

**Illustration 16: Race of Children who are Wards**  
N=476 (2005)

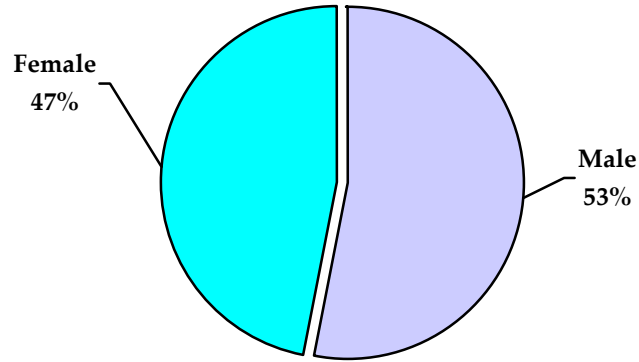
Ramsey County provides care for children whose parents are unable to care for them. Services are intended to move children back to their home. When this isn't possible the County becomes the legal guardian of the children. In 2005, there were 476 children in Ramsey County who were State Wards.



**Illustration 17: Ages of Children who are Ramsey County Wards**  
N = 476 (2005)



**Illustration 18: Gender of Children who Ramsey County Wards  
N=476**



**Out of Home Placement**

The children in the Adoption/Guardianship Unit are in out of home placement. The Unit tries to keep children in home settings, however some children need alternative placements because of a crisis or for mental health treatment. There were 3,287 placements in 2005. Of these placements, 599 or 22% were made by the Adoption/Guardianship Unit. The vast majority of placements for children are in foster care (82%).