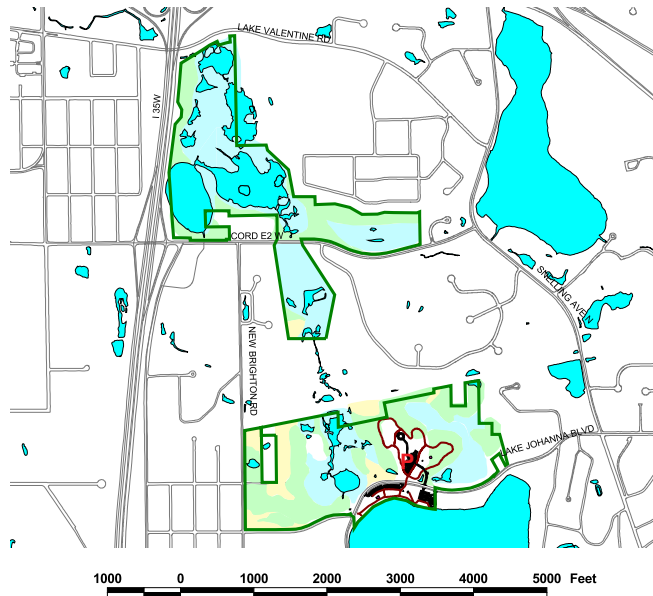


## Tony Schmidt - Lake Johanna



**LOCATION:** Tony Schmidt Regional Park is located on the north shore of Lake Johanna and extends up to I-694 in Arden Hills. The developed portion of the park is located on Lake Johanna Blvd. It can be reached by taking the Co. Rd. E exit from Snelling Ave (Hwy 52). Go west on Co. Rd. E. The road turns into Lake Johanna Blvd. Parking is available on both sides of the road. Paved trails are located north of the road.  
**MAP #:** 4

**HABITAT:** Lake Johanna provides shallow and deep water sites for waterfowl and waders. The wetlands south of the railroad tracks are shrub swamp, while the wetlands north of the railroad are open cattail marsh. The uplands around the picnic area are restored oak woods and oak savanna.

**REGULAR BIRDS:** Lake Johanna is a good stopover site for migratory waterfowl and loons. The oak savanna is good for spring warblers. Sora and Virginia Rails are regular in the wetland.

**CONTACT:** Ramsey County Parks and Recreation Department  
 2015 N. Van Dyke St.  
 Maplewood, MN 55109  
 (651) 748-2500  
[www.co.ramsey.mn.us/parks](http://www.co.ramsey.mn.us/parks)