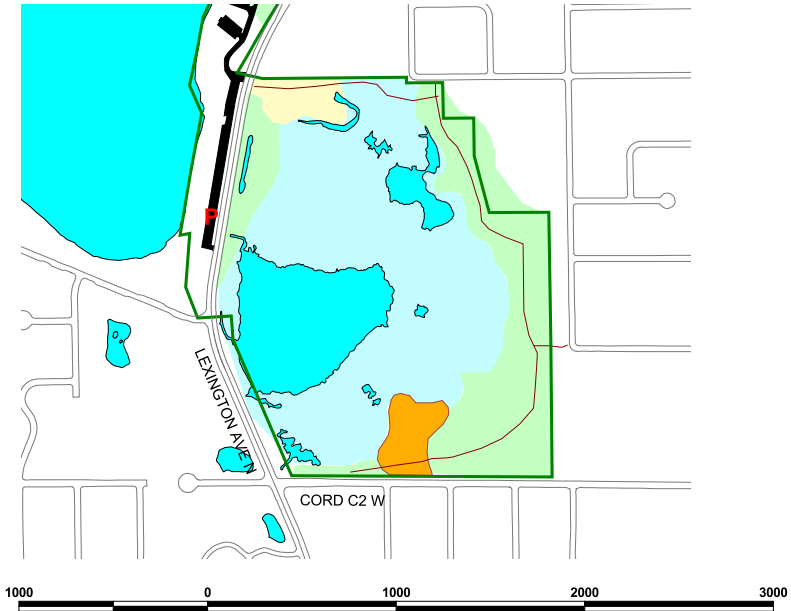


Little Lake Josephine



LOCATION: Little Lake Josephine is part of Lake Josephine County Park. It is located in north-central Roseville. The park is on Lexington Ave., just north of Co. Rd. C2., from Hwy 36 take Lexington Ave. exit and go 1.5 miles north. Parking is located in the main park. A turf/chipped trail goes around Little Josephine Marsh.

PRAIRIE FACTS: The prairie at Lake Josephine County Park is a small 2-acre peninsula on the south end of Little Josephine. The dominant grass is Big Bluestem.

OTHER HABITATS: Little Josephine is a large cattail marsh with a shrub swamp on the north end. The east side of the property is an oak woods.