



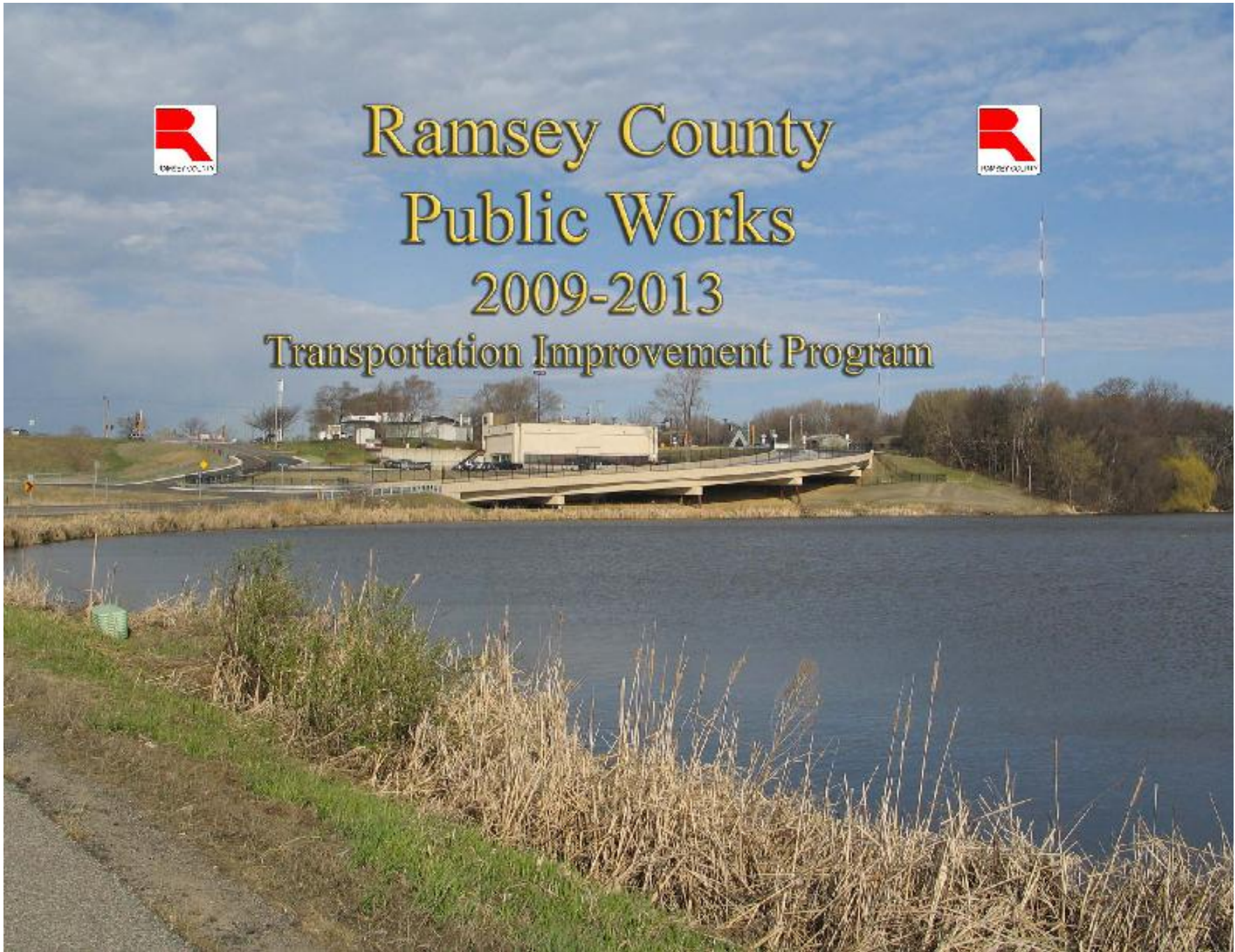
Ramsey County



Public Works

2009-2013

Transportation Improvement Program



**RAMSEY COUNTY PUBLIC WORKS DEPARTMENT
2009 - 2013 TRANSPORTATION IMPROVEMENT PROGRAM
AND
DEFICIENT BRIDGE PROGRAM**

RAMSEY COUNTY BOARD OF COMMISSIONERS

**Tony Bennett
Toni Carter
Jim McDonough
Rafael E. Ortega
Jan Parker, Chair
Victoria Reinhardt
Janice Rettman**

**Prepared by the Ramsey County Public Works Department
Kenneth G. Haider, P.E., Director and County Engineer**

Ramsey County Public Works Department 2009-2013 Transportation Improvement Plan

TABLE OF CONTENTS

	Page
Introduction	3
Definitions	4
2009 Construction Projects	5
2009 Maintenance Projects	6
2010 Construction Projects	7
2011 Construction Projects	8
2012 Construction Projects	9
2013 Construction Projects	11
2009-2013 Construction Funding	12
Un-funded Construction Projects	13
Deficient Bridge Program	14

Appendices

A. Ramsey County Cost Participation Policy

B. Alphabetical Listing of Projects

C. Project Location Maps

Ramsey County Public Works Department 2009-2013 Transportation Improvement Plan

INTRODUCTION

The Ramsey County Department of Public Works is responsible for providing the network of County roads that, combined with the Interstate Highway system, the State Trunk Highway system, and the municipal street system, serves the needs of the driving public and bus-based transit in the County. Ramsey County consists of 103,923 acres of land (170.2 square miles) with a 2000 population of 511,000.

There are two types of roads under the jurisdiction of the County: County State Aid Highways, totaling 271.721 miles and numbered 1 through 79, whose construction and maintenance are funded primarily from the Minnesota Highway User Tax Distribution Fund. County roads, totaling 23.768 miles in length and numbered 80 through 163, which are funded from property taxes. All of these roads and the 91 bridges on them require monitoring and maintenance by the Public Works Department of Ramsey County. The improvements scheduled to be performed to these roads and bridges in the years 2009-2013 are contained in this Transportation Improvement Program.

The Transportation Improvement Program was developed by assessing the condition of the existing system and its ability to meet the public's needs. Deficiencies were analyzed and alternatives to correct them considered. Priorities were established through community involvement. The need for a project is considered along with technical staff capabilities and funding availability. Scores were developed for projects by assessing these and other factors to determine how projects should be prioritized for implementation.

As the population of the Twin Cities metropolitan area grows, it will not be feasible to serve the area's transportation needs by expanding the road systems. Strategic initiatives to mitigate congestion and improve the efficiency of the system, and to complement transit, will become crucial to the

viability of the road system. As projects are identified to manage traffic, they will be incorporated in the Transportation Improvement Plan.

The Transportation Improvement Program consists of a five-year schedule of projects proposed for implementation by the Ramsey County Department of Public Works. The first year of the Transportation Improvement Program includes identified projects that will be implemented upon acceptance of the public involvement process and the availability of funds.

There are seven categories of projects included in the Transportation Improvement Program: construction projects for 2009, maintenance projects for 2009, capital improvement projects for 2010, 2011, 2012, and 2013 and a bridge improvement program.

The estimated costs identified in this program are based on Ramsey County's experience in the reconstruction of similar roadways. The participation shown is in accordance with the Ramsey County cost participation guidelines (Resolution No. 88-265), which was adopted by the Ramsey County Board of Commissioners on May 10, 1988. A copy of the cost participation guidelines is included as Appendix A.

The Ramsey County Department of Public Works will do an annual review and programming of projects within the Transportation Improvement Program. Funding for the program will also be reviewed annually. Projects will be added to the program based on the annual funding analysis.

Ramsey County Public Works Department 2009-2013 Transportation Improvement Plan

DEFINITION OF HEADINGS USED IN TIP

Location:	Name of road
Rd. #:	County number of road
Termini:	Beginning and ending of project
City:	Abbreviation for city or cities in which project is located
Work Proposed:	Type of work to be performed
Project Status:	Anticipated letting date of the project

Type: The various types of projects are as follows:

- CON - A project to be performed by the Construction Division of Ramsey County
- MND - A project of the Minnesota Department of Transportation
- MNT - A project to be performed by the Maintenance Division of Ramsey County
- ENV - A project of the Environmental Division of Ramsey County

Status: the progress made on a specific project. Letters A through G represent:

- A - Identify need for project
- B - Initiate work on a feasibility or federal report
- C - Final feasibility or federal report approved
- D - Plan preparation begun
- E - Plans approved
- F - Bidding and award of contract complete
- G - Currently under contract

Funds Types (listed in \$ X 1,000): CSAH - County State Aid Highway; County - County contribution; City – municipal contribution; State - State funds; Other -other funds sources; Total - Total cost of the project.

Ramsey County Public Works Department 2009-2013 Transportation Improvement Plan

Implementation of projects contained in this Transportation Improvement Program is dependent upon acceptance via the required public involvement process and the availability of funds. Funds indicated may be requested, but will not necessarily be received. If the funds are not received from all sources, the projects could be delayed. Projects must meet acceptable standards as well as other criteria in order to qualify for the funding as shown.

2009 Construction Projects

Location	Road No.	Termini	City	Work Proposed	Type	Status	CSAH	CTB	City	State	Other	Total
County Rd. D	19	at Southlawn	MW	geometrics/signals	CON	A	107		215			322
Rice Street	49	Gramsie to Bridge St.	SV/VH	reconstruction	CON	A		4,358	469			4,827
Plato Blvd.	40	at Wabasha St.	SP	signals	CON	A	142		142			284
Lakewood Drive	68	at Maryland	MW	geometrics/signals	CON	A				205 (1)		205
County Rd. H	9	at Silver Lake Rd. (CSAH 44)	NB/MV	geometrics/signals	CON	A				190 (1)		190
Hamline Ave.	50	at County Road B (CSAH 25)	RV	signal revision- APS	CON	A	30					30
Various				signal revision-APS	CON	A	50					50
Various				signal revision- EVP	CON	A			51			51
Various				striping/signage	CON	A					115 (2)	115
Rice Street	49	at BNSF RR	SP	bridge rehabilitation	CON	A		2,860				2,860
Maryland Ave.	31	west of I-35E	SP	bridge rehabilitation	CON	A	545		100	1,000	480 (3)	2,125
Beam Ave.	19	at Countryview Dr.	MW	geometrics/signals	CON	A	250		330	115	1900	2,595
Parkway Dr.	27	at TH 61	MW	geometrics/signals	CON	A	70		406	245		721
CSAH 96	96	at MNRR	WB	RR Xing surface	CON	A	100					100
Totals							1,294	7,218	1,713	1,755	2,495	14,475

(1) Local Road Improvement Program (LRIP) funds (state), (2) Highway Safety Improvement Program (HSIP) funds (federal), (3) STP

Ramsey County Public Works Department 2009-2013 Transportation Improvement Plan

Ramsey County's pavement management system uses general road inventory information, observed pavement conditions and field measurements to determine types of maintenance required on its roads. The pavement management system also establishes priorities and determines costs for the maintenance work. Projects will be completed pending availability of funds

2009 Maintenance Schedule

Location	Road No.	Termini	City	Work Proposed	Type	County	CSAH	Total
County Road H	88	West County Line to Silver Lake Rd.	MV/NB	mill/overlay	MNT	67		
Eagle Street	152	Kelly Ct. to Park Ave.	WB/WT	CIR	MNT	48		
Sherwood Road	4	Turtle Lake Rd. to North County Line	SV/WB/NO	overlay	MNT	172		
Lexington Parkway	51	Orchard Ave. to Larpenteur Ave.	SP	mill/overlay	MNT	383		
Park Avenue	85	East Bald Eagle Blvd. to Hugo Ct.	WT	CIR	MNT	48		
County Road B	25	Fairview Ave. to Snelling Ave.	RV	mill/overlay	MNT		178	
Bald Eagle Avenue	67	9 th St. to Bald Eagle Blvd.	WB/WT	mill/overlay	MNT		156	
Rice Street	49	I-694 to Little Canada Rd.	LC/RV	mill/overlay	MNT		414	
County Road B	25	1251' East of Rice St. to I-35E	LC/MW	mill/overlay	MNT		126	
Cleveland Avenue	46	350' North of County Road D to County Road E2	NB	mill/overlay	MNT		477	
McKnight Road	68	Burns Ave. to Minnehaha Ave.	SP/MW	mill/overlay	MNT	431		
5 th Ave. NW	46	County Road E2 to Old Highway 8	NB	mill/overlay	MNT	43		
Totals						1,192	1,351	2,543

Ramsey County Public Works Department 2009-2013 Transportation Improvement Plan

Implementation of projects contained in this Transportation Improvement Program is dependent upon acceptance via the required public involvement process and the availability of funds. Funds indicated may be requested, but will not necessarily be received. If the funds are not received from all sources, the projects could be delayed. Projects must meet acceptable standards as well as other criteria in order to qualify for the funding as shown.

2010 Construction Projects

Location	Road No.	Termini	City	Work Proposed	Type	Status	CSAH	CTB	City	State	Other	Total
White Bear Ave.	65	Radatz Ave. to CR D	MW/WB	reconstruction	CON	B	6,233		2,075	100	7,441 (1)	15,849
County Road D	19	at I-35W	RV/NB	signal replacement	CON	A	203		45	203		451
Warner Road	36	at Childs Rd.	SP	replace EB bridge	CON	A	5,389			2,261 (2)	5,350 (1)	13,000
Maryland Avenue	31	at Rice Street	SP	geometrics/signals	CON	A	2,971				529	3,500
Various				signal revisions-APS	CON	A	50					50
CSAH 96	96	at MNRR	WB	RR Xing surface	CON	A	100					100
Totals							14,946	0	2,120	2,564	13,320	32,950

(1) STP, (2) State Bridge Bonds

Ramsey County Public Works Department 2009-2013 Transportation Improvement Plan

Implementation of projects contained in this Transportation Improvement Program is dependent upon acceptance via the required public involvement process and the availability of funds. Funds indicated may be requested, but will not necessarily be received. If the funds are not received from all sources, the projects could be delayed. Projects must meet acceptable standards as well as other criteria in order to qualify for the funding as shown.

2011 Construction Projects

Location	Road No.	Termini	City	Work Proposed	Type	Status	CSAH	CTB	City	State	Other	Total
County Road B2	78	Snelling to Fairview	RV	reconstruction	CON	A	3,500		2,000	310	9,369 (1)	15,179
Highway 96	96	at Trunk Highway 10	AH	construct interchange	CON	A		5,714	490	1,756	7,000 (1)	14,960
Hamline Avenue	50	at TH 36/Commerce St	RV	signal replacement	CON	A	125		94	31		250
Maryland Avenue	31	at prosperity Ave.	SP	geometrics/signals	CON	A	800		216		722 (1)	1,738
Various				signal revisions-APS	CON	A	50					50
Various				RR Xing surface	CON	A	50					50
Totals							4,525	5,714	2,800	2,097	17,091	32,227

(1) 2,969 STP; 6,400 Other

Ramsey County Public Works Department 2009-2013 Transportation Improvement Plan

Implementation of projects contained in this Transportation Improvement Program is dependent upon acceptance via the required public involvement process and the availability of funds. Funds indicated may be requested, but will not necessarily be received. If the funds are not received from all sources, the projects could be delayed. Projects must meet acceptable standards as well as other criteria in order to qualify for the funding as shown.

2012 Construction Projects

Location	Road No.	Termini	City	Work Proposed	Type	Status	CSAH	CTB	City	State	Other	Total
Rice Street	49	CR B2 to Little Canada Rd.	RV/LC/MW	reconstruction	CON	A	600	4,190	600			5,390
Rice Street	49	at TH 36	RV/LC/MW	reconstruct interchange	CON	A		2,500	1,000	3,000	18,500	25,000
University Avenue	34	W. County Line to Rice St.	SP	reconstruction	CON	A		3,000				3,000
Various				signal revisions-APS	CON	A	50					50
Various				RR Xing surface	CON	A	50					50
Totals							700	9,690	1,600	3,000	18,500	33,490

Ramsey County Public Works Department 2009-2013 Transportation Improvement Plan

Implementation of projects contained in this Transportation Improvement Program is dependent upon acceptance via the required public involvement process and the availability of funds. Funds indicated may be requested, but will not necessarily be received. If the funds are not received from all sources, the projects could be delayed. Projects must meet acceptable standards as well as other criteria in order to qualify for the funding as shown.

2013 Construction Projects

Location	Road No.	Termini	City	Work Proposed	Type	Status	CSAH	CTB	City	State	Other	Total
Rice Street/I-694	49	N. Owasso to Vadnais Blvd.	VH/SV/LC	interchange const.	CON	A	2,500		1,200	22,300		26,000
Hamline Ave.	50	at MNRR	RV	RR Xing signal	CON	A	22				203	225
Lexington Ave.	51	at MNRR	RV	RR Xing signal	CON	A	22				203	225
Victoria St.	52	at MNRR	RV	RR Xing signal	CON	A	22				203	225
Bald Eagle Ave.	67	at CPRR	WB/WT	RR Xing signal	CON	A	20				180	200
Silver Lake Rd.	44	at MNRR	NB	RR Xing signal	CON	A	17				153	170
Long Lake Rd.	45	at MNRR	NB	RR Xing signal	CON	A	17				153	170
Various				signal revisions-APS	CON	A	50					50
Various				RR Xing surface	CON	A	50					50
Totals							2,720	0	1,200	22,300	1,095	27,315

Ramsey County Public Works Department 2009-2013 Transportation Improvement Plan

2009-2013 Construction Funding

Year	CSAH	County	CTB	City	State	Other	Total
Total 2009 Construction	1,294		7,218	1,713	1,755	2,495	14,475
Total 2009 Maintenance	1,351	1,192					2,543
Total 2010 Construction	14,946			2,120	2,564	13,320	32,950
Total 2011 Construction	4,525		5,714	2,800	2,097	17,091	32,227
Total 2012 Construction	700		9,690	1,600	3,000	18,500	33,490
Total 2013 Construction	2,720			1,200	22,300	1,095	27,315
Totals	25,536	1,192	22,622	9,433	31,716	52,501	143,000

Ramsey County Public Works Department 2009-2013 Transportation Improvement Plan

Projects in the unfunded category have been deferred from the programmed category of the TIP based on an analysis of transportation funds available for the completion of projects programmed in the TIP. These projects will be placed back into the five-year programmed schedule based on the availability of additional transportation funding. Each project will be analyzed to determine their prioritization for inclusion in the programmed category of the TIP.

Unfunded Construction Projects

Location	Road No.	Termini	City	Work Proposed	Type	Status	CSAH	CTB	City	State	Other	Total
County Road D	19	Cleveland to Fairview	AH/RV	reconstruction	CON	A	2,025		675			2,700
Centerville Rd.	139	Little Canada to Edgerton	LC	reconstruction	CON	A	2,700		675			3,375
White Bear Ave.	65	at E 7 th St.	SP	signals/geometrics	CON	A	700		1,500			2,200
White Bear Ave.	65	Minnehaha to I-94	SP	reconstruction	CON	A	5,000		1,500			6,500
Pennsylvania Ave.	33	Rice to Mississippi	SP	reconstruction	CON	A	3,000		2,000		1,000	6,000
White Bear Ave.	65	at I-694	MW/WBL	reconstruct interchange	CON	A	7,000		1,000	10,000	18,000	36,000
Rice Street	49	CR C to N. Owasso Blvd.	RV/MW/LC	reconstruction	CON	A		4,500	1,000			5,500
CSAH 96	96	at I-35E	WB	reconstruct interchange	CON	A	6,000		1,000	6,000	18,250	31,250
Totals							26,425	4,500	9,350	16,000	37,250	93,525

Ramsey County Public Works Department 2009-2013 Transportation Improvement Plan

2009-2013 Deficient Bridge Prioritization

Location	Road No.	Termini	Bridge No.	Sufficiency Rating	MN Priority	Fed. Replacement Eligible?	Fed. Rehab. Eligible?	State Eligible?	Year
Maryland Ave.	31	west of I-35E	6599	42.8	1914		yes	yes	2009
Maryland Ave.	31	west of I-35E	6600	44.8	2035		yes	yes	2009
Rice Street	49	over BNSF RR	9470	47.2			yes	yes	2009
Warner Road	36	over Childs Rd.	5950	43.1	1166	yes	yes	yes	2010
County Road E	15	at TH 51	62010	81					2011
Jackson Street	55	over BNSF RR	5664	48.9			yes	yes	2013
Old Highway 8	77	over MCRR	4533	45.0			yes	yes	2013
Water Street	40	Over Pickeral Outlet	90401	67.2	1416			yes	2014
Rice Street	49	over TH 36	5427	50.3					

**APPENDIX
A
Ramsey County Public Works Cost Participation Policy**

Ramsey County Public Works Department 2009-2013 Transportation Improvement Plan

COST PARTICIPATION POLICY

RAMSEY COUNTY PUBLIC WORKS COST PARTICIPATION GUIDELINES FOR IMPLEMENTATION OF COUNTY POLICY AS OUTLINED IN RESOLUTION 9-1272 FOR THE CONSTRUCTION, RECONSTRUCTION AND MAJOR MAINTENANCE OF ROAD IMPROVEMENTS.

CURRENT STANDARDS FOR THE DESIGN AND CONSTRUCTION OF COUNTY STATE AID HIGHWAYS SHALL APPLY FOR THE INTERPRETATION OF THESE POLICIES. (PERCENT OF COUNTY PARTICIPATION IS LISTED.)

CATEGORY	CSAH > 5000 POPULATION	COUNTY ROAD	CSAH < 5000 POPULATION AND WHITE BEAR TOWNSHIP	COUNTY SHARE OF FEDERAL PROJECT*
Right of Way	0	0	0	100
Removals	100	100	100	100 of non-federal share eligible for State Aid
Travel Lanes	25	100	100	100 of non-federal share
Parking Lanes	25	0	100	25 of non-federal share
Shoulders	25	0	100	25 of non-federal share
Concrete Curb & Gutter (new)	25	0	25	25 of non-federal share
Concrete Curb & Gutter (replacement)	100, if in serviceable condition	0	100, if in serviceable condition	100 of non-federal share
Storm Sewer				

*Federal participation is estimated to be 50 to 77% of eligible items. **Traffic Signal construction is addressed in a separate policy (County Board Resolution 81-1001). ***Retaining walls constructed in lieu of right of way acquisition.

Ramsey County Public Works Department 2009-2013 Transportation Improvement Plan

CATEGORY	CSAH > 5000 POPULATION	COUNTY ROAD	CSAH < 5000 POPULATION*	COUNTY SHARE OF FEDERAL PROJECT**
Storm Sewer	% eligible for State Aid	Assessment Policy	% eligible for State Aid	100 of non-federal share eligible for State Aid
Culverts	100- State Aid	100	100- State Aid	100 of non-federal share
Watermain Modification	100, if required for travel lane construction	100, if required for travel lane construction	100, if required for travel lane construction	100 of non-federal share, if required for travel lane construction
Sanitary Sewer Modification	100, if required for travel lane construction	100, if required for travel lane construction	100, if required for travel lane construction	100 of non-federal share, if required for travel lane construction
Other Utilities (telephone, gas, CATV, Electric, pipelines, etc.)	0, inside of existing R/W; 100, outside of R/W	0	0	0 inside existing R/W; non-federal share outside R/W
Traffic Signals ***	100 of County legs	100 of County legs	100 of County legs	100 of non-federal share of County legs
Roundabouts	100 of County legs	100 of County legs	100 of County legs	100 of non-federal share of County legs
Intersecting Streets	Ratio of surface participation items	Ratio of surface participation items	Ratio of surface participation items	Ratio of surface participation items of non-federal share

*Federal participation is estimated to be 50 to 77% of eligible items. **Traffic Signal construction is addressed in a separate policy (County Board Resolution 81-1001). ***Retaining walls constructed in lieu of right of way acquisition.

Ramsey County Public Works Department 2009-2013 Transportation Improvement Plan

CATEGORY	CSAH > 5000 POPULATION	COUNTY ROAD	CSAH < 5000 POPULATION*	COUNTY SHARE OF FEDERAL PROJECT**
Retaining Walls	25***	0	25***	100 of non-federal share
Grading behind Curb	100	0	100	100 of non-federal share
Pedestrian Grade Separations	25	25	25	0 of non-federal share
Sidewalks (new)	25	25	25	0 of non-federal share
Sidewalks (replacement)	100, if in serviceable condition	0	100, if in serviceable condition and required for travel lane construction	100 of non-federal share, if in serviceable condition and required for travel lane construction
Bituminous Bike Path (new)	25, if on approved system & funds are available	25, if on approved system & funds are available	25, if on approved system & funds are available	0
Bituminous Bike Path (replacement)	100, if in serviceable condition and required for travel lane construction	100, if in serviceable condition and required for travel lane construction	100, if in serviceable condition and required for travel lane construction	100 of non-federal share, if in serviceable condition
Bituminous Overlay	100	100	100	N/A

*Federal participation is estimated to be 50 to 77% of eligible items. **Traffic Signal construction is addressed in a separate policy (County Board Resolution 81-1001). ***Retaining walls constructed in lieu of right of way acquisition.

Ramsey County Public Works Department 2009-2013 Transportation Improvement Plan

CATEGORY	CSAH > 5000 POPULATION	COUNTY ROAD	CSAH < 5000 POPULATION*	COUNTY SHARE OF FEDERAL PROJECT**
Replacing or Transplanting Trees	25	0	100	25 of non-federal share
Replacement Shrubs	0	0	0	0
Fencing Replacement	100, if in serviceable condition; 0 if on County R/W or in poor condition	0	100, if in serviceable condition; 0 if on County R/W or in poor condition	100 f non-federal share, if in serviceable condition; 0 if on County R/W or in poor condition
Seeding, Sodding, Fertilizer	100	0	100	100 of non-federal share eligible for State Aid
Driveway Replacement	100	0	100	100 of non-federal share eligible for State Aid
Preliminary Engineering	% of participation	% of participation	% of participation	% of participation, prior to application of federal funds
Construction	% of participation	% of participation	% of participation	% of participation, prior to application of federal funds

*Federal participation is estimated to be 50 to 77% of eligible items. **Traffic Signal construction is addressed in a separate policy (County Board Resolution 81-1001). ***Retaining walls constructed in lieu of right of way acquisition.

Ramsey County Public Works Department 2009-2013 Transportation Improvement Plan

APPENDIX B 2009-2013 Transportation Improvement Program Projects

Location	Rd. No.	Termini	City	Work Proposed	Type	Year
5 th Avenue NW	46	County Road E2 to Old Highway 8	NB	mill/overlay	MNT	2009
Bald Eagle Avenue	67	at CPRR	WB/WT	RR Xing Signal	CON	2013
Cleveland Avenue	46	350' North of County Road D to County Road E2	NB	mill/overlay	MNT	2009
County Road B	25	Fairview Ave. to Snelling Ave.	RV	mill/overlay	MNT	2009
County Road B	25	1251' East of Rice St. to I-35E	LC/MW	mill/overlay	MNT	2009
County Road B2	78	Snelling Ave. to Fairview Ave.	RV	reconstruction	CON	2011
County Road D	19	at Southlawn	MW	geometrics/signals	CON	2009
County Road D	19	at I-35W	RV/NB	signal replacement	CON	2010
County Road H	9	at Silver Lake Rd. (CSAH 44)	NB/MV	geometrics/signals	CON	2009
County Road H	88	West County Line to Silver Lake Rd.	MV/NB	mill/overlay	MNT	2009
Eagle Street	152	Kelly Ct. to Park Ave.	WB/WT	CIR	MNT	2009
Hamline Avenue	50	at County Road B (CSAH 25)	RV	signal revision- APS	CON	2009
Hamline Avenue	50	at TH 36/Commerce St.	RV	signal replacement	CON	2011
Hamline Avenue	50	at MNRR	RV	RR Xing signal	CON	2013
Highway 96	96	at MNRR	WB	RR Xing Surface	CON	2009
Highway 96	96	at Trunk Highway 10	AH	construct interchange	CON	2011
Lakewood Drive	68	at Maryland Ave.	MW	geometrics/signals	CON	2009
Lexington Avenue	51	at MNRR	RV	RR Xing signal	CON	2013
Lexington Parkway	51	Orchard Ave. to Larpenteur Ave.	SP	mill/overlay	MNT	2009

Ramsey County Public Works Department 2009-2013 Transportation Improvement Plan

Maryland Avenue	31	west of I-35E	SP	bridge rehabilitation	CON	2009
Maryland Avenue	31	at Prosperity Ave.	SP	geometrics/signals	CON	2010
Maryland Avenue	31	at Rice St.	SP	geometrics/signals	CON	2010
McKnight Road	68	Burns Ave. to Minnehaha Ave.	SP/MW	mill/overlay	MNT	2009
Park Avenue	85	East Bald Eagle Blvd. to Hugo Ct.	WT	CIR	MNT	2009
Plato Boulevard	40	at Wabasha St.	SP	signals	CON	2009
Rice Street	49	Gramsie to Bridge St.	AV/VH	reconstruction	CON	2009
Rice Street	49	at BNSF RR	SP	bridge Rehabilitation	CON	2009
Rice Street	49	I-694 to Little Canada Rd.	LC/RV	mill/overlay	MNT	2009
Rice Street	49	County Road B2 to County Road C	RV/LC/MW	reconstruction	CON	2012
Rice Street	49	at TH 36	RV/LC/MW	reconstruct interchange	CON	2012
Rice Street	49	N. Owasso Blvd. to Vadnais Blvd.	VH/SV/LC	reconstruct interchange	CON	2013
Sherwood Road	4	Turtle Lake Rd. to North County Line	SV/WB/NO	overlay	MNT	2009
University Avenue	34	West County line to Rice St.	SP	reconstruction	CON	2012
Victoria Street	52	at MNRR	RV	RR Xing signal	CON	2013
Warner Road	36	at Childs Rd.	SP	replace EB bridge	CON	2010
White Bear Avenue	65	Radatz Ave. to County Road D	MW/WB	reconstruction	CON	2010

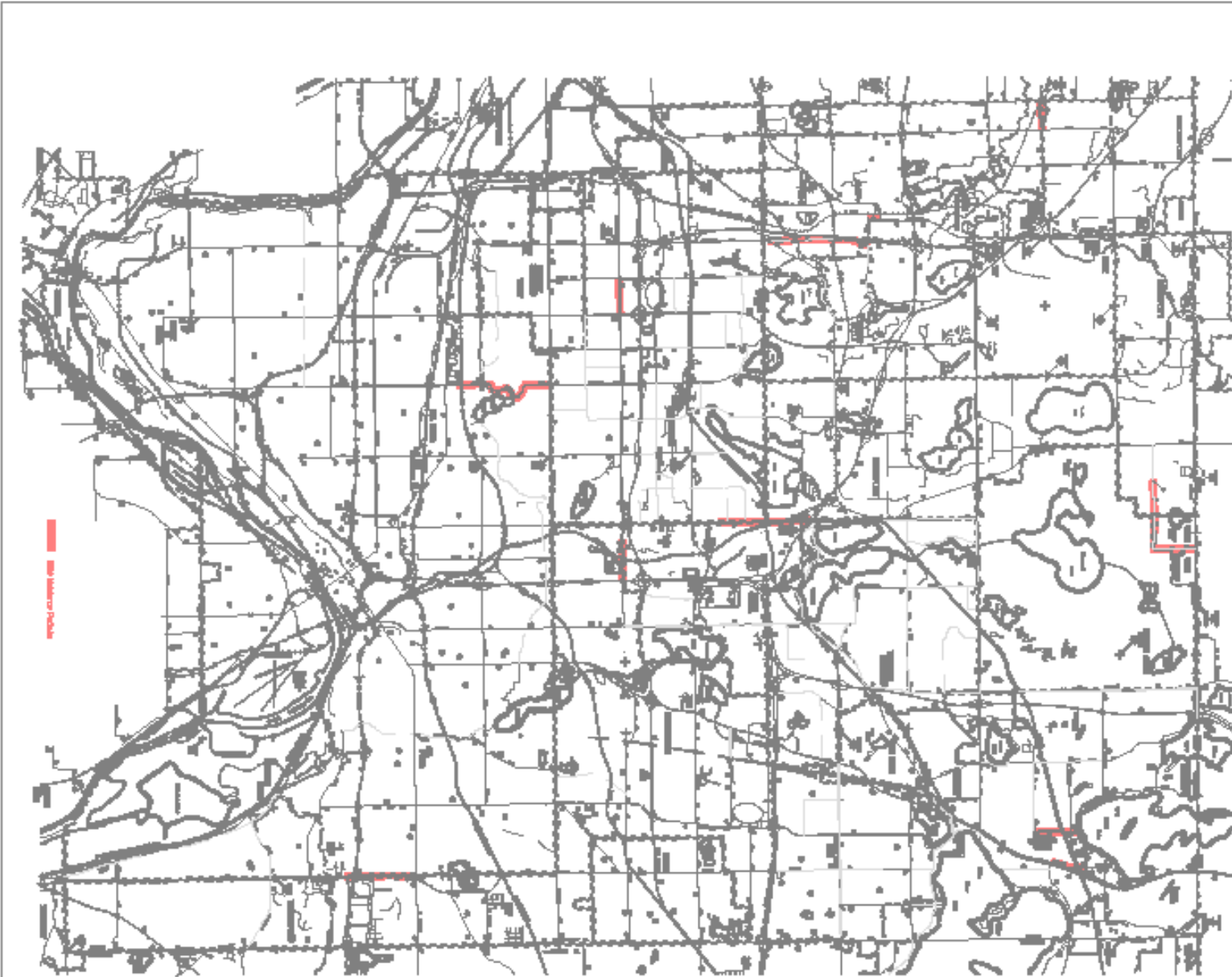
APPENDIX C

Project Location Maps

Ramsey County Public Works Department 2009-2013 Transportation Improvement Plan



Ramsey County Public Works Department Maintenance Projects



Ramsey County Public Works Department 2009-2013 Transportation Improvement Plan



Ramsey County Public Works Department 5 Year Construction Projects Program

