

# Solid Waste

## Section E

### Introduction

The *Regional/Ramsey County Solid Waste Master Plan 2005-2024* (Master Plan) guides management of trash, recyclables, and other solid wastes. Part of the plan focuses on actions specific to Ramsey County and part focuses on various initiatives across the Twin Cities region. The **Master Plan** can be accessed electronically through the following web link:

[http://www.co.ramsey.mn.us/NR/rdonlyres/A274CAF1-D725-4EEE-A286-0641B464CB70/2627/Solid\\_Waste\\_Master\\_Plan.pdf](http://www.co.ramsey.mn.us/NR/rdonlyres/A274CAF1-D725-4EEE-A286-0641B464CB70/2627/Solid_Waste_Master_Plan.pdf)

Minnesota has extensive policies and planning requirements related to solid waste management. The guiding document for the Twin Cities metropolitan area is the *Metropolitan Solid Waste Management Policy Plan 2004-2023* (Policy Plan). It was developed jointly by the Minnesota Pollution Control Agency (MPCA) and the Solid Waste Management Coordinating Board (SWMCB), a joint powers board of Anoka, Carver, Dakota, Hennepin, Ramsey, and Washington Counties. The Policy Plan has the effect of law and sets the standards against which local solid waste plans are reviewed and approved. This **Policy Plan** can be accessed through the following web link:

<http://www.pca.state.mn.us/oea/lc/metroplan.cfm>

The vision and goals in the Policy Plan provide the foundation for county solid waste master plans. The master plans have specific content requirements outlined in Minnesota Statutes and the Policy Plan. The master plans must be prepared with involvement of the public and must be reviewed and approved by the MPCA. Master plans plan for 20 years, with an emphasis on the coming six years.

The SWMCB has coordinated the last two master plans prepared by metropolitan counties. The most recent regional plan is the *Regional Solid Waste Master Plan 2005-2024* (Regional Plan). Working regionally has allowed metropolitan counties to collaborate on items of regional significance and to share resources, while also allowing counties to plan for local circumstances. The **Regional Plan** can be accessed through the following web link:

<http://www.swmcb.org/files/ApprovedRegionalSolidWasteMasterPlan2005-2024.pdf>

Waste management work in Ramsey County is directed by the *Regional/Ramsey County Solid Waste Master Plan* (Master Plan). The Master Plan incorporates both the Regional Plan and county-specific elements. It was adopted by the Ramsey County Board in 2004 and approved by the MPCA in 2005. Using the vision, goals, and policies from the Policy Plan as a framework, the Master Plan includes outcomes, policies, and strategies in the following areas:

- Toxicity Reduction: including household hazardous waste and commercial hazardous waste;
- Waste Reduction, Reuse, and Recycling: Ramsey County also includes a yard waste section;
- Processing: including waste-to-energy and composting of separated organic waste;
- Landfilling: including mixed municipal solid waste (MSW);
- Non-MSW Management: including solid wastes other than MSW, such as construction, demolition, and industrial wastes;
- Regulation; and
- Cost and Finance.

The Policy Plan, the Regional Plan, and the county master plans work in concert to assure that the solid waste system addresses the environmental and health goals established in law. The text for the county master plan is presented below.

Following revision of the regional solid waste policy plan in 2009, the SWMCB and its counties will revise the regional and county solid waste master plans during 2010, with implementation of these new master plans beginning in 2011.

Addendum 1 at the end of this section includes selected updates on solid waste issues.

## **Regional/Ramsey County Solid Waste Master Plan**

The Ramsey County Board of Commissioners adopted the *Regional/Ramsey County Solid Waste Master Plan* on November 16, 2004. The County obtained input from several sources in developing the Master Plan. The County has been engaging the public on solid waste management issues in a variety of ways since the current master plan was adopted in early 1999. Two primary sources of this information have been:

- Public Collection Study. During 2001-2 Ramsey and Washington Counties undertook an extensive process to study the potential for public collection of solid waste to help the Counties achieve environmental, health, and safety goals (see Processing section of Description of the Solid Waste Management System). The Counties provided a significant number and variety of opportunities to obtain input from the public and the regulated community.
- Resident and Business Surveys. Since the late 1980s the County has periodically conducted random, statistically significant surveys of residents and the business community on a variety of solid waste-related subjects. The most recent survey was of residents during summer of 2004.

In addition, the County has sought input specifically to the process for revising the Ramsey County portion of the master plan:

- Ramsey County Solid Waste Advisory Committee. State statute requires that metropolitan counties have a county solid waste advisory committee to aid in the preparation of the county master plan and revisions to the master plan. The committee

must consist of citizen representatives, representatives from towns and cities within the county, and representatives from private waste management firms. (The committee must also include residents of towns or cities within the county containing solid waste disposal facilities; this does not apply to Ramsey County because there are no solid waste disposal facilities located in the county.)

The Ramsey County Board of Commissioners established the Ramsey County Ad Hoc Solid Waste Advisory Committee in May 2004 with the following members. The Committee met four times between June and October 2004 and provided valuable input in developing the master plan.

- Citizen representatives. Debby Baumgartner, David Christianson, Eric Haugee, David Lowell, Dawn Nelson, Becky Reyer
- Municipal representatives. Rick Person (Saint Paul), Tim Pratt (Roseville), Scott Somers (White Bear Lake)
- Industry representatives. George Walter (Walter's Refuse and Recycling), Chuck Wegner (BFI), Gary White (NRG)
- Community Health Services Advisory Committee Liaison. Jack Rossbach
- Minnesota Office of Environmental Assistance Liaison. Anne Gelbmann

Other Public Input. Two meetings with municipal recycling coordinators were held in September and October 2004, and the plan revision was outlined to city managers in October 2004. A meeting was held with Saint Paul community council staff in October 2004. County staff sent a notice to chief administrative officials and recycling coordinators of municipalities and to all licensed waste haulers and solid waste facilities, notifying them of the availability of the draft master plan and seeking their input. The draft master plan was also posted on the County's web site in October 2004 for the purposes of seeking input from the public. In addition, County staff also worked closely with Washington County staff in developing plan sections pertinent to both Counties.

## **Vision, Goals, and Key Themes**

See the *Regional Solid Waste Master Plan 2005-2024* (no separate Ramsey County version): <http://www.swmcb.org/pdf/ApprovedRegionalSolidWasteMasterPlan2005-2024.pdf>

## **Description of the Solid Waste Management System**

### **Introduction**

Ramsey County is the smallest county geographically in Minnesota and also the most densely populated. Its 2000 Census population was 511,035, and the 2003 Metropolitan Council estimate was 515,274. While pockets of developable land remain, the vast majority of Ramsey County has already been developed. Redevelopment continues to occur in many places in the county.

According to Metropolitan Council population forecasts, Ramsey County, while the slowest

growing of the metropolitan counties, is still forecast to continue to grow to 541,000 in population in 2010 and 563,000 in 2020. Employment is projected to grow from 329,000 employees in 2000 to 370,000 in 2010 and 402,000 in 2020.

Ramsey County’s population is becoming increasingly diverse in terms of race, culture, and language. **Table 1** shows broad changes from the 1990 to 2000 Census by race and ethnicity.

**Table 1  
Changes in Race and Ethnicity in Ramsey County, 1990-2000**

	<b>1990</b>	<b>2000</b>
White	88%	77%
Black/African-American	5	8
American Indian/Alaska Native	1	1
Asian	5	9
Other Races	1	5
TOTAL	100%	100%
Hispanic/Latino (any race)	3	5

Ramsey County includes all or part of 19 communities, the largest of which is the City of Saint Paul. Estimated 2003 population for the Ramsey County portion of all communities is shown in **Table 2**. (Note that this master plan focuses on 17 communities: the Cities of Blaine and Spring Lake Park, with almost all of their populations in Anoka County, are addressed in the Anoka County solid waste master plan.)

**Table 2  
2003 Metropolitan Council Population Estimates for Communities in Ramsey County**

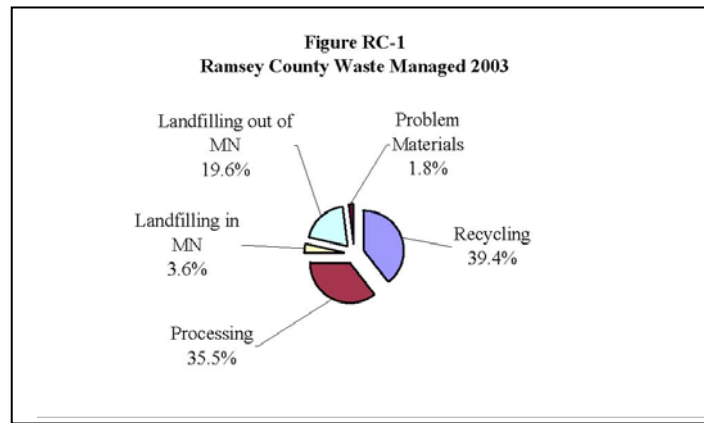
<b>Municipality</b>	<b>2003 Population (within Ramsey County)</b>
Arden Hills	9,457
Blaine (part)	0
Falcon Heights	5,579
Gem Lake	442
Lauderdale	2,364
Little Canada	9,890
Maplewood	35,763
Mounds View	12,865
New Brighton	22,332
North Oaks	4,082
North St. Paul	12,273
Roseville	34,080
St. Anthony (part)	2,512
Saint Paul	287,604
Shoreview	26,475
Spring Lake Park (part)	105
Vadnais Heights	13,270
White Bear Lake (part)	24,517
White Bear Township	11,664
<b>RAMSEY COUNTY</b>	<b>515,274</b>

## Waste Generation and Collection

### Quantities of Solid Waste

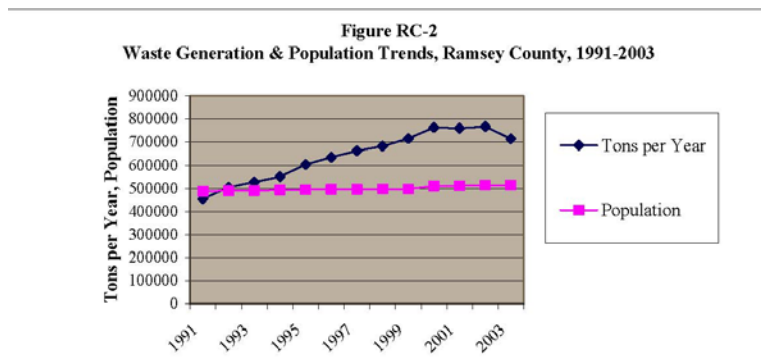
Ramsey County reported about 716,000 tons of mixed municipal solid waste (MSW) managed in 2003 (does not include yard waste managed). As shown below in **Figure RC-1**:

- 39.4% was recovered for recycling (adding the 3% source reduction credit and 5% yard waste credit allowed by the State, the County's reported recycling rate was 47.4%);
- 35.5% was delivered to the Ramsey/Washington County Resource Recovery Facility in Newport (NRG-Newport), of which about 27% was converted to refuse derived fuel (RDF) and about 9% was landfilled (waste that bypassed the processing lines, including both non-processible waste and excess waste, plus residuals from the processing lines);  
\*36.8% when recycled metals at NRG-Newport are included; this material is already included in the 39.4% recovered for recycling.
- 1.8% was separately managed problem materials (not recycled, and not processed at an MSW facility; e.g., tires, used oil, and solvents combusted in separate facilities for energy); and
- 23.2% was landfilled as unprocessed waste (19.6% to landfills outside of Minnesota and 3.6% to landfills within Minnesota; does not include any waste delivered to NRG-Newport).



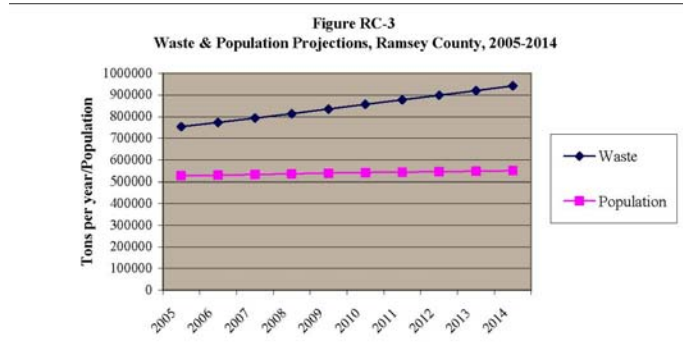
### Historic Waste Generation

This section addresses mixed municipal solid waste (MSW) generation. As shown in **Figure RC-2**, according to annual reports (SCORE and Certification) submitted by Ramsey County to the State, total MSW increased significantly during the 1990s, and then has leveled off since the turn of the century.



## Forecasted Waste Generation

**Figure RC-3** shows projected waste growth for Ramsey County for the 10-year period from 2005 through 2014. Like any projection, this one is based on numerous assumptions\*, and thus actual waste growth could be higher or lower than projected.



\* The projections are based on the following:

- While the chart begins with 2005 the calculations begin in the base year of 2003. For the base year an average of the total MSW reported for 2002 and 2003 was used. This average was used because, due to implementation of the County Environmental Charge, a substantial amount of what was called MSW by waste haulers in 2002 was reported as industrial or construction/demolition waste in 2003, resulting in an overall smaller amount of MSW in 2003.
- The base year was adjusted by the growth rate of population, as projected by the Metropolitan Council for Ramsey County for 10-year intervals and interpolated for intervening years. The Metropolitan Council projects employment in Ramsey County to increase at a faster rate than population for this time period; this means that these projections may be conservative (because MSW is generally reported in aggregate—not separated by residential vs. non-residential sources—there is no generally accepted method of making waste projections that reflects both population and employment changes over time).
- The last element used in these waste projections was to use historical average annual changes in per capita waste generation, which was calculated by the Minnesota Office of Environmental Assistance (MOEA) to be 2.0% per year for the SMWCB region for 1991-2002.

The projection does show significant waste growth in future, even though Ramsey County’s population is projected to grow at a considerably slower rate than other metropolitan area counties. As shown in Figure RC-3, waste generation in Ramsey County could increase substantially by 2014, from about 755,000 tons in 2005 to about 942,000 tons in 2014, an increase of 25% versus population increase of only 4%. Most of the waste growth is due to the projected increase, based on historical trends, in waste generation per person of 2.0% per year

## Waste Collection

As of 2004, of the over 200 waste haulers licensed by metropolitan counties to collect and transport MSW, 32 are based in Ramsey County (base licenses). Ramsey County also licenses 86 haulers based in other counties (operating licenses).

Ramsey and Washington Counties track how much trash each hauler collects in the two counties, both the total amount and the amount delivered to the Resource Recovery Facility in Newport (NRG-Newport). For the two counties combined during 2003:

- The top three haulers collected 57% of the total trash;
- The top ten haulers collected 82% of the total trash.

Residents in five communities in Ramsey County are served by “organized collection,” in which the city or township arranges for MSW (trash) collection for all of its residents, or at least all single-family residents, by contract with one or more waste haulers: Little Canada, North St. Paul, Vadnais Heights, White Bear Lake, and White Bear Township. Except for some municipal buildings, all MSW collection in the county for businesses, industries, and

institutions is provided under “open collection,” also known as “subscription service,” in which waste generators contract individually with a waste hauler of their choice.

Waste haulers take MSW collected from waste generators directly to NRG-Newport, to a transfer station, or to a landfill. Waste generators can also haul their own waste to transfer stations in the county, NRG-Newport, or to transfer stations or landfills in other counties.

All but two communities provide curbside or on-site recycling services to their residents (again, to all residents or at least all single-family residents) by contract with one or more haulers or recycling service providers. All recycling services are provided by subscription service to residents of Mounds View and St. Anthony, as well as to all businesses, industries, and institutions (except for some municipal buildings) throughout the county.

## **Toxicity Reduction**

### **Household Hazardous Waste (HHW) Program**

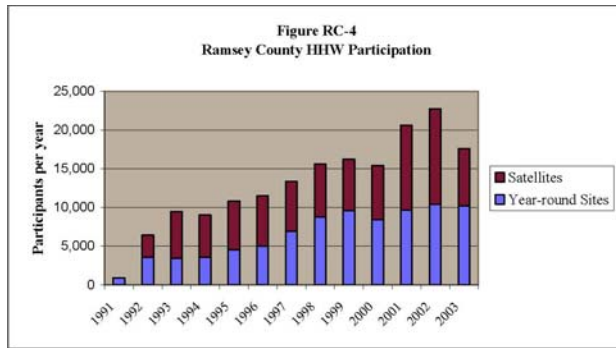
Minnesota Statute §115A.96 requires counties to include plans for HHW in their solid waste plans. These plans must provide for public education on HHW, develop a strategy to reduce HHW, and provide for the collection of HHW (Minn. Stat. §473.804 contains a similar requirement specifically for metropolitan counties). Ramsey County has complied with this mandate, and has designed an HHW program to ensure safe, convenient and effective collection and management of HHW.

#### *HHW Collection Services*

Ramsey County provides year-round HHW collection services for residents. The County has contracted with Bay West, Inc. through 2009 to provide a year-round site, operate the year-round site plus seasonal satellite sites, and package wastes for shipment to recycling or disposal locations. The County has directed Bay West to use State contract vendors for transportation and disposal of all wastes.

Located at Bay West’s headquarters at 5 Empire Drive in Saint Paul, the year-round site is open on Saturdays from November through March, and on Wednesdays through Saturdays from April through October. The County has five satellite site locations, one within Saint Paul (Pleasant Avenue Ice Arena) and four in suburban areas (Maplewood, Roseville, White Bear Lake, and Shoreview). These sites are typically open Fridays and Saturdays for several weekends at a time per site. The County also provides HHW collection services in conjunction with selected municipal cleanup events.

**Figure RC-4** shows participant counts for Ramsey County’s year-round and seasonal satellite sites since 1999. Counts are closely correlated with the amount of publicity provided. For example, during 2002 the County undertook extensive publicity, and 22,767 participants used the sites, while in contrast during 2003 publicity efforts were decreased due to budget cuts, and only 17,606 participants used the sites.



Paint, including both latex and oil, accounts for a majority of all wastes received. The next largest waste streams received are used oil and solvents. Other significant waste streams include compressed gas cylinders, aerosols, antifreeze, fluorescent lamps, and lab packs (which include a variety of wastes such as pesticides). In terms of how these wastes are ultimately managed, during 2003, 44% was recycled, 48% was fuel-blended, and 8% was incinerated.

*HHW Promotional Activities and Public Education on HHW Reduction*

Ramsey County promotes the availability of HHW collection sites in a variety of ways, including the County and municipal web sites, brochures handed out at various events and other venues, and to callers to the County’s 633-EASY hotline. The County provides recorded messages in several languages.

The County promotes HHW reduction in printed materials distributed to users of the HHW collection sites and in conversations with callers to the hotline. The messages encourage residents to buy only the amount of product they need, to safely use up the products they buy, or to choose less or non-hazardous products. Department of Public Health nurses providing home health care visits supply information to clients in Ramsey County on safe use and proper management of hazardous household products.

The County provides a variety of outreach tools designed for specific audiences, such as targeted mailings to specific zip codes, and specific events, such as community clean-ups. Opening of new seasonal satellite sites and changes in seasonal operating hours provide opportunities for promotion through press releases and other media outlets. (Also see Waste Reduction and Reuse section for a discussion of public information, education, and promotion methods used by the County.)

**Hazardous Waste Compliance Program**

To meet statutory requirements, Ramsey County has adopted a Hazardous Waste Management Ordinance that outlines generator and facility licensing requirements, proper management of waste, and enforcement provisions. To facilitate compliance, the County provides hazardous waste generators with information and training on proper management of hazardous waste, and also conducts periodic inspections of licensed operations. Generator license fees vary based on volume of waste generated, providing an incentive to reduce waste generation.

The County regulates (as of 2004) 1,987 hazardous waste generators. Based on an extensive

study of risk issues in 2000, they are divided into four risk categories: high risk (229, inspected annually), medium risk (1,090, about 2/3 inspected annually), low risk (233, about 1/3 inspected annually), and self-audit (435, annual audit review, 5% randomly inspected annually). There were 1,336 inspections performed during 2003. Hazardous waste staff provides substantial technical assistance during telephone calls (about 2,700 during 2003). The County also refers businesses and other non-households to other resources, such as MnTAP (Minnesota Technical Assistance Program), which provides consultation services on hazardous waste minimization and management

Staff offers general hazardous waste training sessions open to all licensed businesses, plus industry-specific training, as needed, to targeted industries. On-site training is also offered to all licensed businesses. In 2003 staff conducted four annual training sessions, 26 on-site training sessions, and 45 on-site consultations. Training covers hazardous waste management issues and includes a pollution prevention component and waste reduction advice. The County also mails a quarterly hazardous waste newsletter to all licensed hazardous waste generators and others on request. Each issue covers hazardous waste management and always includes a pollution prevention or waste reduction component. Staff also participates in the Mercury Free Zone project with schools; the focus is to eliminate mercury at the schools.

To encourage more recycling of certain hazardous wastes, Ramsey County also informs generators about opportunities to participate in the MPCA's Special Waste Pilot Project. This project reduces regulatory requirements, saving generators money and effort while promoting recycling over incineration or disposal of wastes. About ¾ of all hazardous waste generators report the generation of one or more of the hazardous wastes that are covered by the Special Waste Project.

### **Private Sector Services**

The private sector provides many services related to reducing the toxic or hazardous character of waste or properly managing problem materials or hazardous wastes. Such services include: waste minimization, pollution prevention, and hazardous waste management consultation; hazardous waste transportation; waste testing (to determine if a waste tests hazardous); hazardous waste disposal; recycling of hazardous wastes (that fall under the MPCA's Special Waste Pilot Project); and recycling of various other hazardous wastes or problem materials.

## **Waste Reduction, Reuse, Recycling, and Yard Waste Management**

### **Waste Reduction and Reuse**

Ramsey County places a major focus on waste reduction in its general public education and information activities, as well as specific waste reduction messages that are integrated into the yard waste, household hazardous waste, and hazardous waste compliance programs. As summarized below, the County uses a variety of methods in its extensive efforts to provide information and education to the public on waste reduction and reuse, as well as other solid waste management issues:

- Web Sites. A variety of information is provided on the County's web site, and is provided to municipalities to use on their web sites. People can also email questions to

County staff.

- Telephone Lines and Recorded Messages. Ramsey County has provided the 633-EASY “hotline” since the 1980s to respond to questions from the public about reuse, recycling, yard waste, household hazardous waste, difficult-to-dispose-of materials, and other solid waste issues. Calls from businesses and other organizations are directed to the County’s Business Waste Assistance staff for information on reduction and recycling opportunities. The County also provides recorded messages, some in different languages, for specific program areas.
- Brochures. The County provides a variety of brochures, typically for specific program areas. These are distributed to the public in a variety of ways, usually dependent on the specific nature of the brochure. Brochures are produced by a variety of sources, such as the County and the Minnesota Office of Environmental Assistance (MOEA). Examples of methods and audiences of distribution include municipal and other local government offices, health/environmental fair events, solid waste haulers and transfer stations, new resident packets, community clean-up events, utility bill inserts, private employers, and HHW and yard waste sites.
- Presentations. County staff makes presentations on many aspects of solid waste management, especially on waste reduction (e.g., low-waste shopping and holiday entertaining), HHW, recycling, and composting. Presentations are made to a variety of audiences, such as community groups, faith-based groups, schools and school-related groups, libraries, business groups, day care facilities, and Early Childhood Family Education.
- Publications. *Trash Today*, published by the Ramsey/Washington County Resource Recovery Project and sent about twice per year to all residents and businesses in both Ramsey and Washington Counties, includes articles about many aspects of an integrated waste management system, ranging from waste reduction to waste processing.
- Municipalities. County staff meets with municipal recycling coordinators regularly and provides information for municipalities to use in their web sites and newsletters, and to provide to the public at various events.

The County also promotes reuse through its contract with the Free Market, a listing service for residents who want to give or get free reusable goods for the home, garage, and garden.

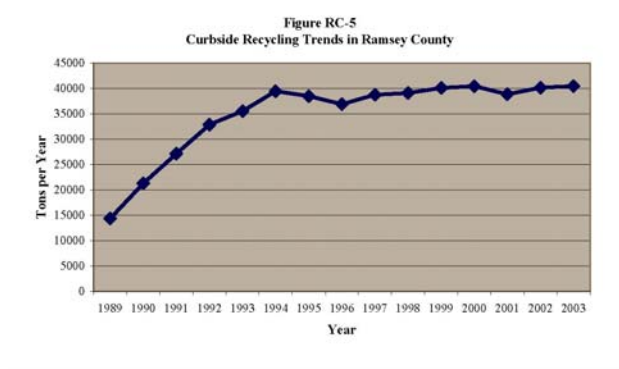
## **Recycling**

### *Residential Recycling*

Minnesota Statute §115A.552 sets out requirements for opportunities for residents to recycle. Ramsey County ensures the opportunity to recycle by directing municipalities, through its solid waste master plan, to provide for recycling services to all residents. The County provides SCORE grant funding to municipalities to partially support those programs.

For single-family residents, most municipalities contract with one or more haulers or recycling collectors to provide curbside service; two municipalities provide for curbside service by requiring by ordinance that licensed waste haulers provide a specified basic level of recycling

service to their customers. As shown in **Figure RC-5**, curbside-recycling tonnage has been relatively stable at around 40,000 tons per year for about a decade.



For multi-unit housing, some municipalities provide direct service to multi-unit housing using the same contract as for curbside recycling, some require by ordinance that licensed waste haulers provide recycling service, and some rely on arrangements by building management through ordinance requirements or other means. Almost all municipalities provide for collection of at least four broad (e.g., paper/cardboard, metal, plastic, glass, textiles) materials, at least every other week (North Oaks provides for monthly collection of three broad materials but will be collecting every other week in 2005).

One municipality, White Bear Lake, operates a drop-off facility for its residents, and Saint Paul provides funding (through its contractor, Eureka Recycling) for a drop-off facility open to the public at Vasko Solid Waste, Inc. Many municipalities and also district councils in Saint Paul provide periodic cleanup events at which recyclable materials and other wastes are accepted.

Funding for municipal programs, including collection of recyclables, is supported by annual “SCORE” grants from Ramsey County from the annual SCORE monies the County receives from the State. During 2004 the County allocated \$985,000 to municipalities in SCORE grants, distributed on a per capita basis. The grant agreement between the County and each municipality has several stipulations, including a requirement that if a municipality does not provide for on-site recycling service for all its residents, the County may deny granting a portion of the grant proportional to the number of households not provided with service.

The County requires each municipality to have a long-term funding mechanism in place to supplement SCORE grants. Mechanisms used include collecting revenues through utility bills, requiring haulers to directly bill customers, or arranging through a joint powers agreement with Ramsey County to collect a separate municipal recycling service charge (using the County’s statutory service fee authority) on residential property tax statements.

The County coordinates regular municipal recycling coordinator meetings to share information on recycling, waste reduction, yard waste, HHW and other issues, and to share public education strategies and information.

The County contracts with Eureka Recycling to provide the (651) 633-EASY telephone hotline to provide information to residents on recycling and other solid waste management topics.

### *Non-Residential Recycling*

According to a random survey of Ramsey County businesses conducted in 2000, about 69% recycle cardboard, 67% recycle office paper, and 76% recycle cans.

Ramsey County provides businesses and institutions information and technical assistance on recycling and various waste management issues, through over-the-phone consultation, referrals, and web links (such as to the SWMCB *Resourceful Waste Management Guide*). Staff providing information and technical assistance to hazardous waste generators also can provide information on recycling and other solid waste management.

The vast majority of recycling activity in the commercial sector occurs by private sector arrangement. Most commercial waste haulers in the county offer some kind of recycling service to their customers, although the types of materials collected and collection arrangements vary significantly. A number of material brokers and businesses specializing in recycling services also provide recycling options for a wide variety of materials.

### *Drop-Off and Other Collection Activities*

Many collection sites in Ramsey County offer a drop-off opportunity to residents, commercial entities, or both to recycle one or more materials. Except for the City of White Bear Lake drop-off site, all other drop-off sites in Ramsey County are privately owned and operated.

### **Yard Waste Management**

Minnesota Statute §115A.931 prohibits yard waste from being placed with MSW or being disposed of in a landfill or resource recovery facility. Yard waste is defined in statute to include leaves, grass clippings, garden waste, and tree and shrub waste. A combination of public and private systems provides generators of yard waste with several management options.

Ramsey County operates a network of seven-yard waste collection sites. Begun as neighborhood or municipal sites during the 1980s, the sites became exclusively operated by the County after the statutory yard waste ban went into effect in 1990. The sites are open 38 hours per week, five days per week, from April through November, weather permitting. Each site has a least one site monitor present, employed by the County, to direct and assist residents and to prevent illegal dumping. There are no user charges at the sites. The County composts leaves at one site and distributes finished compost to all sites for residents to take.

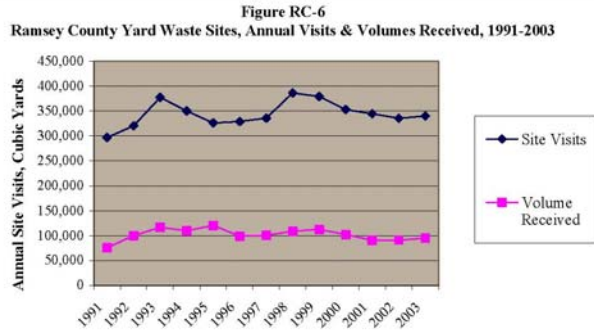
Beginning in 2004 the County began accepting tree and shrub waste from residents at four of the seven sites. Over 90,000 cubic yards of tree and shrub waste was received during 2004. Wood chips are also provided to residents when available.

**Figure RC-6** presents the annual number of visitors to the Ramsey County sites, and the estimated volume of yard waste (not including tree and shrub waste) received, from 1991 through 2003. On average the sites receive a total of about 350,000 site visits annually and about 100,000 cubic yards of yard waste.

Ramsey County promotes the availability of its yard waste sites in a variety of ways. Information is on the County web site. The County provides recorded message hotlines in several languages. The contracted provider of the County’s solid waste and recycling hotline, (651) 633-EASY, provides information on using the sites, both by answering telephone calls from residents

and by mailing out yard waste brochures to the public.

Brochures are also distributed to residents coming to the yard waste sites, through municipal and Saint Paul community council offices, and at various special events, classes, and other opportunities. County staff also field specific questions by telephone from the public.



The County encourages residents to reduce the amount of yard waste they generate through changes in turf management (e.g., leaving grass clippings on the lawn and avoiding excessive fertilization), backyard composting, and proper selection, planting, and care of trees and shrubs. The UM-Extension, through a contract with the Department of Public Health, provides information to residents, primarily through the Master Gardener program.

*Private and Municipal Sites and Transfer Stations*

For a fee, residents and businesses may deliver yard waste to private yard waste sites and solid waste transfer stations located both within and outside the county. Rates charged may vary by site, by type of material, and by quantity. Residents of the City of Roseville may, at no charge, bring leaves to a City compost site in spring and fall.

A number of communities, including both municipalities and neighborhood community councils in Saint Paul, have offered residents opportunities to dispose of tree and shrub waste at municipally-sponsored cleanup events or other locations. Typically, but not always, a fee is charged.

*Yard Waste Collection*

The vast majority of residents are served by waste haulers offering separate collection of yard waste, including tree and shrub waste. Rates vary: increasingly haulers are charging for season-long pickup although some charge for individual pickups. In the five communities with organized trash collection, residents are offered yard waste pickup, either as an optional cost or as part of the contracted service. Haulers typically specify preparation requirements, and some place limitations on the quantity collected per stop. Some lawn services and tree services also provide collection of yard waste.

## **Processing**

### **Introduction**

Ramsey County responded to State policy promoting mixed municipal solid waste (MSW) processing by working with Washington County on a resource recovery project. The result was the opening in 1987 of the Ramsey/Washington County Resource Recovery Facility, located in Newport, Minnesota, which processes MSW into refuse-derived fuel (RDF).

### **Ramsey/Washington County Resource Recovery Project**

Ramsey and Washington Counties have entered into a joint powers agreement to administer a Service Agreement with NRG, Inc., for resource recovery services. The Counties jointly administer the Service Agreement through the Ramsey/Washington County Resource Recovery Project. A Joint Staff Committee, comprising Ramsey County, Washington County, and Project staff, manages the Project.

The Service Agreement establishes that NRG will provide waste processing services over a twenty-year period through July 2007, and that the Counties will assure a flow of waste to the Facility (often referred to as NRG-Newport). The Service Agreement provides that NRG can receive waste generated outside of the two counties provided that NRG's commitments to the two Counties under the Service Agreement are not impaired. The Service Agreement has been amended numerous times since the Facility began operations.

#### *Public Information and Education*

The Resource Recovery Project has engaged in a variety of educational efforts. *Trash Today*, a newspaper about various aspects of an integrated solid waste management system, is distributed to all residents and businesses of both Ramsey and Washington Counties about twice per year. A "Trash Trunk," containing a variety of educational supplies on waste reduction, recycling, and other waste issues, is distributed for use by schools and community organizations. The Project will pay for tours by schoolchildren of NRG-Newport. Project staff also does presentations on waste issues for community groups.

#### *Public Collection Study*

In conjunction with Ramsey and Washington Counties, the Resource Recovery Project conducted an extensive study during 2001-02 on public collection of various solid waste streams to address waste management and collection issues. During 2001 county commissioners came to recognize that problems with the Resource Recovery Facility in Newport were but a symptom of overall problems in waste management, and that the market for solid waste collection and disposal was preventing achievement of environmental, health, and safety goals. The primary issue addressed was whether the County could arrange for the management of waste through contracts to meet these goals. The Counties provided extensive opportunities for input from the public and regulated community on this study.

Some of the major conclusions from the study included:

- The public strongly supports managing waste in a manner that protects health and the environment.
- Public collection can be designed and implemented to address environmental, health, and safety goals.
- The public is split on the issue of public collection.
- The waste industry is vigorously opposed to public collection but generally amenable to implementing a hauler-collected service charge and entering into waste delivery contracts.

Some of the steps the County engaged in as a result of the study were that the County:

- Developed a hauler-based service fee or County Environmental Charge (CEC), begun in April 2003, to have a more volume-based fee for waste services.
- Developed waste delivery agreements for Resource Recovery Facility from 2003 to 2007.
- Directed that public collection not be implemented at that time. The County would seek to meet environmental, health, and safety goals through public/private partnerships, and if those efforts were not successful, the County would then implement public collection.

#### *Food Waste/Organics Management*

With the development of a more volume-based County Environmental Charge, the Counties greatly expanded work on food waste/organics management. In 2003 and 2004, Ramsey and Washington Counties worked jointly through the Resource Recovery Project to provide outreach services and increased information to organic-rich businesses and institutions. The Project Board contracted with a consultant that provided extensive outreach services to schools, hospitals, and institutional cafeterias. Services have focused on food waste since it is: 1) easy to understand and to separate from garbage, and 2) offers the greatest cost savings, because food waste is heavy, wet, and dense, and most waste management costs are based on the weight of the waste.

#### **Ramsey/Washington County Resource Recovery Facility: NRG-Newport**

##### *Operations*

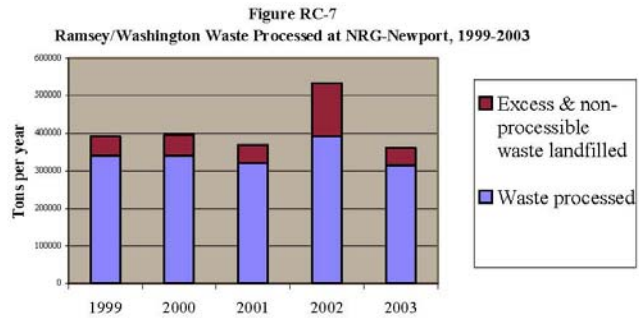
Waste delivered to the Facility is weighed at the scale house, dumped onto the tipping floor, and fed into one of two processing lines. An oversized bulky waste shredder is used as needed by NRG to shred items too large to be processed directly through the processing lines. Non-processible waste (as defined in the Service Agreement) and waste delivered in excess of processing capacity is transferred to a landfill. Small amounts of other materials, such as car batteries and tires, are sometimes found in the waste and separated by NRG for proper management. Waste is shredded in a large hammermill, ferrous metals are removed by magnets, aluminum is removed with an eddy-current separator, and the waste is sorted using a series of screens and blowers. The result is four waste streams: 1) refuse-derived fuel (RDF), primarily composed of lightweight materials; 2) ferrous metals recovered for recycling; 3) aluminum

recovered for recycling; and 4) residue, comprising the remaining materials.

The RDF is trucked to Xcel Energy power plants in the Red Wing and Mankato areas, which were retrofitted during the 1980s to burn RDF exclusively to generate electricity. Metals are recycled locally. The remaining residue is landfilled.

### Summary Data on MSW Processing

**Figure RC-7** shows trends in total waste deliveries and the amount processed since 1999. The year 2002 featured a spike in waste deliveries in the initial year that both Counties entered into contracts with waste haulers through mid-2007.



## Landfilling

### Introduction

There are no operating landfills in Ramsey County. Some MSW generated in Ramsey County is delivered as unprocessed waste to landfills, and certain wastes from NRG-Newport are delivered to landfills (non-processible wastes, excess waste that bypasses the processing lines, and residue from the processing lines). (See Waste Generation, Quantities of Solid Waste.) A variety of nonMSW wastes generated in the County are also landfilled.

### Dump Inventory

Since 1988 Ramsey County has maintained a dump site inventory to locate, identify, describe and document active and inactive solid waste disposal facilities, and dump sites in Ramsey County. The inventory includes known sites developed before regulations were in place, sites that operated under permits or other approvals and are now closed, solid waste disposal sites on the State Superfund list, and illegal dump sites. There are about 250 sites in the inventory, approximately 25 of which are sites that were at some time issued a permit or license to operate by a municipality, Ramsey County, or the MPCA.

### NonMSW Management

For purposes of this *Master Plan* "nonMSW" is a "catch-all" term encompassing any solid waste material that is not managed as mixed-municipal solid waste (MSW). It includes those materials determined by the State to be problem materials (e.g., treated wood and several materials specifically identified in State law that may not be disposed with MSW) and certain items specifically excluded from the statutory definition of MSW or otherwise managed as separate waste streams (e.g., agricultural waste, ash, construction debris, demolition debris, industrial

waste, sludges, street sweepings). Management of nonMSW occurs primarily through private sector services. Some materials are collected by haulers specializing in transporting particular waste materials, while some others may be collected by MSW haulers or delivered by the generator directly to a collection, transfer, or management facility.

## **Regulation**

### **County Solid Waste Ordinance**

Ramsey County regulates various aspects of solid waste management through the Ramsey County Solid Waste Ordinance and Administrative Ordinance. State law requires the County to regulate certain activities, and authorizes but does not require the County to regulate other activities. The Solid Waste Ordinance incorporates all of the statutory requirements pertaining to counties and includes additional provisions beyond statutory requirements. Major categories of the Solid Waste Ordinance include:

- Licensing of mixed-municipal solid waste (MSW) collectors and transporters, land disposal facilities, landspreading/land application, transfer stations, solid waste processing facilities, and waste tire facilities.
- Enforcement related to licensing requirements and waste storage.
- Establishment of a County Environmental Charge, charged as a percentage of MSW hauler bills.

As of 2004, of the over 200 waste haulers licensed by metropolitan counties to collect and transport MSW, 32 are based in Ramsey County (base licenses). Ramsey County also licenses 86 haulers based in other counties (operating licenses). The MSW haulers licensed in Ramsey County have about 976 vehicles licensed for the collection and hauling of MSW. All MSW haulers licensed by Ramsey County and providing residential service comply with the State statute requiring they provide volume-based fees.

The County licenses eight transfer stations. All accept construction and demolition waste. Five are licensed to accept MSW, and four of those are open to the public. A fifth transfer station open to the public only accepts construction and demolition waste.

Ramsey County has issued a solid waste processing license to a medical waste processing facility in Saint Paul. The County also periodically receives requests for licenses for land application and waste storage, which typically are issued on a short-term basis.

### **Other Regulation**

The County also has a requirement in its Food Protection Ordinance that licensed food and beverage establishments (throughout the county other than in Maplewood, New Brighton, or Saint Paul) must provide for recycling of paper, cans, and plastic and glass bottles.

All municipalities in Ramsey County have ordinances addressing solid waste collection, and many also have other ordinance provisions addressing waste storage and management issues. Saint Paul is the only municipality to have a mandatory recycling ordinance for both residents

and businesses. Several municipalities use ordinance requirements to require licensed haulers to provide recycling or to require multi-unit buildings to provide for recycling.

## **Cost and Finance**

Solid waste programs and services in Ramsey County depend on a blend of public and private initiatives to manage waste. This blend complicates any discussion of financing, as much of the money that funds private waste management programs is not reported to the County. Those elements under the purview of Ramsey County are described below.

### **Expenses**

Ramsey County funds a variety of solid waste programs plus its hazardous waste compliance program. Major items include:

- Administration
- Public education/information/promotion
- Technical assistance and education to businesses regarding solid and hazardous waste management
- Providing SCORE grants to municipalities to help fund recycling activities
- Household hazardous waste program
- Yard waste management program
- Solid and hazardous waste regulatory functions
- A portion of the cost of resource recovery services provided by NRG-Newport that is not covered by the tipping fee charged by NRG at NRG-Newport

### **Revenue Sources**

Ramsey County relies on several revenue sources to pay for waste management services. Major sources include:

- **State grants.**
  - SCORE Grant. The State of Minnesota assesses a Solid Waste Management Tax on certain waste management activities. This tax goes into the State's general revenue, but a portion of this amount is provided to counties in the form of SCORE grants. Eligible expenses include waste reduction, recycling, problem materials management, public information and education, technical assistance, litter prevention, and MSW processing.
  - Local Recycling Development Grant. Landfills in the metropolitan area must collect a surcharge on waste tipped at those facilities and remit those funds to the State. Per statutory formula, a portion of those proceeds becomes Local Recycling Development Grants for metropolitan counties.
- **License fees.** Ramsey County licenses waste haulers, solid waste and hazardous waste facilities, and commercial hazardous waste generators. License fees collected are used for solid and hazardous waste compliance programs administered by the County.
- **Household Hazardous Waste Program Contracts.** Ramsey County has an agreement with Xcel Energy for reimbursement of costs associated with collecting and managing fluorescent lamps through the County's HHW program. Ramsey County is also a party along with other SWMCB counties in the region's Reciprocal Use Agreement, which entitles the County to be

reimbursed by another county for costs associated with serving a resident of that county.

- **County Environmental Charge.** Ramsey County implemented the County Environmental Charge in 2003. The County Environmental Charge (CEC) appears on hauler bills for all customers of garbage services in Ramsey County. The CEC also applies to residents and others bringing their own garbage to a solid waste transfer station in Ramsey County. The CEC replaced the Waste Management Service Charge that was collected on the property tax bill.

The CEC applies only to services to collect, transport, process or dispose of mixed municipal solid waste generated in Ramsey County, including equipment rental. The CEC does not apply to wastes that are separated for recycling or composting and delivered to facilities where they are recycled or composted. And unlike the State's Solid Waste Management Tax, the CEC does not apply to waste services for construction and demolition waste, medical/infectious waste, or certain types of industrial waste.

The CEC is more visible to generators than the old property tax-based service charge, especially generators who do not pay a property tax but do pay a garbage bill. The increased visibility can provide a greater incentive to look at options for managing waste differently. Generators get a better picture of how much it really costs to manage the garbage they create because costs are presented in one place, rather than some costs on the garbage bill and some costs on the property tax statement. Also, the CEC is more closely related to volume of waste than the old property tax-based service charge because haulers charge customers according to how much garbage they pick up. CEC funds are used for the Resource Recovery Project and for other solid waste programs.

## **Ramsey County-Specific Policies, Strategies, & County Supporting Initiatives**

### **Toxicity Reduction (TR)**

*Note: The order in which policies, County supporting initiatives, and strategies are listed does NOT denote any order of priority.*

#### **Ramsey County-Specific Policies**

- TR Policy #1. It is the policy of Ramsey County that products that have a toxic or hazardous character are best managed through a product stewardship approach. In dealing with toxic products, the County will emphasize management through shared responsibility by manufacturers, distributors, retailers, and consumers. The County will develop residential collection systems only until product stewardship systems are in place for toxic and hazardous materials.
- TR Policy #2. Ramsey County will a) Provide for household hazardous waste (HHW) management services at a level of convenience and financial accessibility that discourages improper management while not providing a disincentive for reducing the amount of HHW produced in the future; and b) Continue to seek to share the potential risk of managing HHW with the State of Minnesota.
- TR Policy #3. Ramsey County's HHW collection program will provide for management of HHW in a cost-effective manner that minimizes risks to public health, occupational health, property, and the environment.

- TR Policy #4. Ramsey County will continue to contract with the private sector for HHW collection services, provided that doing so will protect public health and the environment and that cost and risk factors are similar to or more favorable than public operation of part or all of HHW collection services.
- TR Policy #5. Ramsey County product exchange will be limited to latex paint.
- TR Policy #6. Ramsey County has the following roles with respect to regulated hazardous waste: a) To assure compliance with applicable laws related to the cradle-to-grave management of hazardous waste, as required by Minnesota Statute §473.811; and b) To provide information, technical assistance, and consultation services to hazardous waste generators regarding the use and management of hazardous materials.
- TR Policy #7. Ramsey County will continue to implement regulated hazardous waste compliance programs focused on risk. As such, regulatory efforts and fees charged for regulated activities will continue to be based on those factors approved by the County in 2000.

### **Ramsey County Supporting Initiatives**

- TR CSI #1. Ramsey County will develop culturally sensitive and effective methods of communicating environmental and health-related messages to major cultural groups in Ramsey County.
- TR CSI #2. Ramsey County will develop and support environmental education efforts in partnership with other public, private, and non-profit entities.
- TR CSI #3. Ramsey County will emphasize mercury in its toxicity reduction efforts.
- TR CSI #4. Ramsey and Washington Counties will work with public, private, and non-profit entities to explore, and develop as appropriate, additional opportunities for collection of special waste, household hazardous wastes, and hazardous waste.
- TR CSI #5. Ramsey and Washington Counties will work with schools to identify mercury-containing products and/or mercury-related wastes and other hazardous materials, and provide non-hazardous alternatives to the products and ensure proper disposal of the wastes.

### **Ramsey County Strategies Derived from Regional Strategies**

- TR Strategy #1. Under Regional Outcome #1, Regional Strategy #3: The SWMCB and its *MEMBER COUNTIES* will work to integrate toxicity reduction messages into educational initiatives of other public entities, businesses, and non-profit organizations, such as outreach efforts of public health departments.
- TR Strategy #2. Under Regional Outcome #1, Regional Strategy #4: SWMCB *MEMBER COUNTIES* will lead by example in reducing the toxicity of MSW generated in county operations and will encourage other public entities to do the same.
- TR Strategy #3. Under Regional Outcome #2, Regional Strategy #1: The SWMCB will develop consistent messages regarding purchasing decisions and waste management practices that promote

- toxicity reduction. The SWMCB and its *MEMBER COUNTIES* will disseminate these messages to consumers/generators and encourage public entities, businesses, and non-profit organizations to do the same.
- TR Strategy #4. Under Regional Outcome #2, Regional Strategy #3: On an annual basis, the SWMCB will develop public information messages targeting at least one toxic, hazardous, or problem material based on the greatest potential to reduce the toxicity of waste or improve the management of problem materials. The SWMCB and its *MEMBER COUNTIES* will disseminate these messages through regional and county media outlets, web sites and publications.
  - TR Strategy #5. Under Regional Outcome #2, Regional Strategy #4: SWMCB *MEMBER COUNTIES* will continue to provide HHW collection and disposal options to residents, and maintain reciprocal use agreements for HHW programs.
  - TR Strategy #6. Under Regional Outcome #3, Regional Strategy #1: The SWMCB will develop consistent messages regarding purchasing decisions and waste management practices that promote toxicity reduction. The SWMCB and its *MEMBER COUNTIES* will disseminate these messages to businesses/ generators and encourage public entities and non-profit organizations to do the same.
  - TR Strategy #7. Under Regional Outcome #3, Regional Strategy #2: On an annual basis, the SWMCB will select at least one business sector to be the focus of regional public information initiatives and regulatory collaboration, based on the greatest potential to reduce the toxicity of waste. The SWMCB *MEMBER COUNTIES* will target this business sector in county educational and regulatory initiatives.
  - TR Strategy #8. Under Regional Outcome #3, Regional Strategy #4: SWMCB *MEMBER COUNTIES* will continue to use a variety of compliance strategies, including education, consultation, technical assistance, licensing, inspection, and enforcement, to assure that regulated solid and hazardous waste is properly managed.
  - TR Strategy #9. Under Regional Outcome #4, Regional Strategy #1: The SWMCB and its *MEMBER COUNTIES* will continue to work with others to propose and support product stewardship initiatives and legislation addressing products with toxic/hazardous components and problem materials.
  - TR Strategy #10. Under Regional Outcome #4, Regional Strategy #3: The SWMCB and its *MEMBER COUNTIES* will provide opportunities for public entities to learn more about procurement policies that foster product stewardship, such as requiring manufacturers to take back computers at the end of their useful lives.
  - TR Strategy #11. Under Regional Outcome #5, Regional Strategy #3: The SWMCB and its *MEMBER COUNTIES* will promote environmentally preferable purchasing (EPP), including the purchase of less toxic products and products containing reprocessed/recycled hazardous and special wastes.
  - TR Strategy #12. Under Regional Outcome #5, Regional Strategy #4: SWMCB *MEMBER COUNTIES* will lead by example by incorporating environmentally preferable purchasing (EPP) principles, including product stewardship and the purchase of less toxic products, into purchasing contracts and will encourage other public entities to do the same.

## Ramsey County-Specific Strategies

- TR Strategy #13. For its HHW program through at least 2010, Ramsey County will continue to provide approximately the same level of convenience as in 2004, and to promote the use of the HHW sites.
- TR Strategy #14. Ramsey County will periodically review the list of items currently or potentially acceptable at HHW sites, determine how these items should be collected and managed, and determine how management of specific materials should be paid for, with particular attention to: wastes that pose hazards for residential waste collectors or processors; products that are banned from use; hazardous or problem materials for which there are not convenient private-sector collection options; and wastes identified in statutory disposal restrictions.
- TR Strategy #15. Ramsey County will work with municipalities to coordinate publicity for community cleanup events with HHW management educational information.
- TR Strategy #16. Ramsey County will allow for the management of HHW that is inappropriately dumped at municipal or County facilities and properties, or is recovered during the abatement of public health nuisances, through its HHW program.
- TR Strategy #17. For regulated hazardous waste, Ramsey County will continue to assure compliance with applicable laws related to hazardous waste management by having a regulatory program in place that ensures generators and facilities properly manage hazardous waste.
- TR Strategy #18. Ramsey County will continue to require all waste haulers and transfer stations operating in the county to remove and properly manage any hazardous waste materials to assure that regulated hazardous waste is properly managed, and that regulated entities are aware of options that reduce the quantity and hazardous character of waste.
- TR Strategy #19. Ramsey County will continue to require, as a condition of licensure, that transfer stations operating in the county have procedures in place to identify, separate, manage, and document any hazardous waste or problem materials received.
- TR Strategy #20. Ramsey County will continue to require, as a condition of licensure, that waste haulers operating in the county have procedures in place to work with customers to assure that hazardous waste or nonMSW is not collected with MSW, and also that procedures are in place to separate and properly manage hazardous waste and nonMSW that is inadvertently collected by the hauler. The County will work with haulers to inform customers about regulations related to nonMSW and hazardous waste.
- TR Strategy #21. Ramsey County will continue its hazardous waste licensing fee structure that is based on risk rather than generator size, and also provides financial incentives to generators to reduce generation of hazardous waste.
- TR Strategy #22. Ramsey County will continue to function as a clearinghouse of information, with particular focus on providing information to smaller businesses and/or smaller hazardous waste generators about hazardous waste collection and disposal options and opportunities for reducing the toxic/hazardous character of waste.

## Waste Reduction, Reuse, & Recycling, Including Yard Waste (WRRR)

### Waste Reduction, Reuse, & Recycling

*Note: Establishments that are not residential are variously referred to as “non-residential,” “commercial,” or “businesses.” Multi-unit (multi-family) residential dwellings are considered residences, not commercial establishments, for purposes of this master plan.*

#### **Ramsey County-Specific Policies**

- WRRR Policy #1. Ramsey County will assure that the County's waste reduction and recycling information program for residents and non-residential waste generators is compatible with programs in other metropolitan counties and the region.
- WRRR Policy #2. Ramsey County will implement the County-wide waste reduction and recycling education/information program, and coordinate implementation of the SWMCB's waste reduction and recycling education/information program within Ramsey County.
- WRRR Policy #3. Ramsey County will coordinate its waste reduction and recycling education/information efforts with municipalities, and other entities as appropriate, and seek consistency with the County's and SWMCB's waste reduction and recycling programs.
- WRRR Policy #4. Ramsey County requires municipalities to assure recycling service is available to all residents at their place of residence. Ramsey County encourages a level of service that will maximize residential recycling, but requires the following minimum levels of service:
  - a. Municipalities with 5,000 or more in population must assure collection of at least four broad types of materials at least twice per month to all residents.
  - b. Municipalities under 5,000 in population must assure collection of at least three broad types of materials at least once per month to all residents, but are strongly encouraged to assure collection of at least four broad types of materials at least twice per month.
- WRRR Policy #5. Municipalities are responsible for providing information specific to their municipal recycling and solid waste management programs to their residents, and to the County.
- WRRR Policy #6. Ramsey County requires each municipality to be responsible for developing a long-term financing mechanism to fund its residential recycling program.
- WRRR Policy #7. Ramsey County allows municipalities use of the County's statutory service charge authority, through joint powers agreements with the County, to collect a municipal recycling fee for the municipality.
- WRRR Policy #8. Each municipality shall designate a staff person to be the point of contact between the County and municipality on recycling issues.
- WRRR Policy #9. Ramsey County will annually pass through a portion of SCORE funds received by the County to municipalities on a per capita basis to provide partial support of municipal recycling and related programs, subject to SCORE grant requirements. Each year, the County will allocate the same share of the total SCORE funds it receives as was allocated to municipalities in 2004.

- WRRR Policy #10. Municipalities shall use their best efforts to maximize collection of residential recyclable materials in their recycling programs and to maximize marketing of the recyclable materials collected. Municipalities shall make best efforts to avoid disruptions in established municipal recycling programs due to temporary difficulties in marketing specific materials.
- WRRR Policy #11. If a municipality fails to demonstrate that recycling service is available to all residents at their place of residence, the County will provide for such service. The County will retain any portion of the municipality's SCORE grant sufficient to cover the County's cost to provide for that service, and will charge the appropriate party in the municipality for costs not covered by the municipality's SCORE grant.
- WRRR Policy #12. Ramsey County will ensure that all facilities under its control have recycling programs in place in accordance with State law.
- WRRR Policy #13. Ramsey County will engage in environmentally preferable procurement and other practices as required in State law and in ways that are consistent with environmentally preferable procurement practices established by federal guidelines.

### **Ramsey County Supporting Initiatives**

- WRRR CSI #1. Ramsey and Washington Counties will examine the effectiveness of a hauler-based service charge on encouraging reduction and recycling.
- WRRR CSI #2. Ramsey County will develop culturally sensitive and effective methods of communicating environmental and health-related messages to major cultural groups in Ramsey County.
- WRRR CSI #3. Ramsey County will use innovative methods to work with municipalities to assure that State and County solid waste recycling outcomes are met.
- WRRR CSI #4. Ramsey County will develop and support environmental education efforts in partnership with other public, private, and non-profit entities.
- WRRR CSI #5. Ramsey and Washington Counties will promote food waste and organic waste diversion, with preference for waste reduction and recycling.

### **Ramsey County Strategies Derived from Regional Strategies**

- WRRR Strategy #1. Under Regional Outcome #1, Regional Strategy #1: The SWMCB will develop consistent messages regarding purchasing decisions and waste management practices that promote reduction, reuse, recycling, and environmentally preferable purchasing. The SWMCB and its *MEMBER COUNTIES* will disseminate these messages to consumers/generators and encourage public entities, businesses, and non-profit organizations to duplicate these messages.
- WRRR Strategy #2. Under Regional Outcome #1, Regional Strategy #3: Every two years the SWMCB will develop public information messages targeting at least one residential action for region-wide waste reduction/reuse and/or recycling promotion, based on the greatest potential to reduce or recycle waste. The SWMCB and its *MEMBER COUNTIES* will disseminate these messages through regional and county web sites, media outlets, and publications.

- WRRR Strategy #3. Under Regional Outcome #1, Regional Strategy #4: Every two years the SWMCB will develop public information messages targeting at least one commercial material for region-wide waste reduction/reuse and/or recycling promotion, based on the greatest potential to reduce or recycle waste. The SWMCB and its *MEMBER COUNTIES* will disseminate these messages through regional and county web sites, media outlets, and publications.
- WRRR Strategy #4. Under Regional Outcome #1, Regional Strategy #5: The SWMCB and its *MEMBER COUNTIES* will work to develop consistent messages that inform residents and businesses about how to recycle waste. Moreover, the SWMCB and its *MEMBER COUNTIES* will increase recycling promotions in an effort to reinvigorate recycling.
- WRRR Strategy #5. Under Regional Outcome #1, Regional Strategy #8: The SWMCB and its *MEMBER COUNTIES* will work to integrate reduction, reuse, and recycling messages into education initiatives of other public entities, businesses, and non-profit organizations, such as outreach efforts of public health departments.
- WRRR Strategy #6. Under Regional Outcome #1, Regional Strategy #9: SWMCB *MEMBER COUNTIES* will lead by example in reducing, reusing, and recycling MSW in county operations and will encourage other public entities to do the same.
- WRRR Strategy #7. Under Regional Outcome #1, Regional Strategy #9: The SWMCB and its *MEMBER COUNTIES* will work with municipalities to identify strategies to enforce existing building code requirements that promote recycling so that municipalities may implement them.
- WRRR Strategy #8. Under Regional Outcome #3, Regional Strategy #3: The SWMCB and its *MEMBER COUNTIES* will promote environmentally preferable purchasing (EPP), including the purchase of less wasteful and recycled-content products.
- WRRR Strategy #9. Under Regional Outcome #3, Regional Strategy #4: SWMCB *MEMBER COUNTIES* will lead by example in incorporating environmentally preferable purchasing (EPP) principles, including product stewardship and the purchase of less wasteful and recycled content products, into purchasing contracts and will encourage other public entities to do the same.
- WRRR Strategy #10. Under Regional Outcome #5, Regional Strategy #2: Using [GreenGuardian.com](http://GreenGuardian.com) and other regional and county web sites, media outlets, and publications, the SWMCB and its *MEMBER COUNTIES* will promote separate management of food waste by food rescue for people, rendering, and livestock feeding.

### **Ramsey County-Specific Strategies**

- WRRR Strategy #11. To maintain and increase the amount of residential recycling, Ramsey County will continue to work with municipalities to share regional public information messages related to waste reduction and recycling, to share information and technical expertise pertaining to recycling and related solid waste management and sustainability programs, and to examine recycling progress.
- WRRR Strategy #12. Ramsey County will review plans submitted by licensed food and beverage establishments, to ensure that licensees meet recycling requirements in the Food Protection Ordinance by Ramsey County.

- WRRR Strategy #13. Ramsey County will offer contracted technical assistance to municipalities for recycling on an ongoing basis.
- WRRR Strategy #14. Ramsey County will provide support for recycling markets for municipalities through the existing County Recycling Markets Support Fund and its guidelines.
- WRRR Strategy #15. Ramsey County will work with municipalities to seek innovative ways of providing residential recycling service, including joint municipal service contracts, joint public information, and shared recycling administration, and to increase waste reduction and reuse.
- WRRR Strategy #16. Ramsey County will work with municipalities and others to seek innovative ways of providing residential source-separated organics services.
- WRRR Strategy #17. Ramsey County will work with municipalities and others to seek innovative ways to promote and increase non-residential recycling, and to increase recycling at public events and venues.
- WRRR Strategy #18. Ramsey County will offer public entities, including school districts, technical assistance to help them meet statutory obligations for recycling programs.

### **Yard Waste (YW)**

*Note: “Yard waste” (YW) includes soft-bodied yard waste (leaves, grass clippings, weeds, garden waste) and tree and shrub waste.*

### **Ramsey County-Specific Policies**

- YW Policy #1. Ramsey County will promote reduction of soft-bodied yard waste through on-site management (backyard composting and turf management, including mulching of grass clippings).
- YW Policy #2. Ramsey County will continue to provide sites for the management of yard waste in a manner that is as convenient and financially accessible to County residents as reasonably possible.
- YW Policy #3. Ramsey County will encourage the beneficial use of compost and wood mulch.
- YW Policy #4. Ramsey County will not allow residents of other counties or allow commercial yard waste haulers/collectors, lawn services, or tree services to use County yard waste sites.
- YW Policy #5. Ramsey County will manage yard waste using methods that minimize negative environmental effects and promote beneficial use.
- YW Policy #6. Municipally-sponsored management of yard waste is an eligible activity of SCORE (or similar) grants from the County and city service charges collected through the County's waste management service charge authority.

### **Ramsey County-Specific Strategies**

- YW Strategy #1. Ramsey County will provide for operation of its yard waste sites, as detailed

below, through at least 2010. The County will periodically reevaluate aspects of its yard waste system, which could lead to changes in operation.

- a. Ramsey County will continue to provide services to County residents at its yard waste sites for disposal of yard waste without user fees at the sites
  - b. To encourage County residents to consider alternate methods of managing grass clippings, Ramsey County may periodically examine different methods of operating its sites, such as decreasing availability of the sites (site hours and/or locations) during the summer months.
  - c. Ramsey County will continue to accept tree and shrub waste from County residents at selected yard waste sites and to ensure that the materials accepted are used to produce energy or are otherwise used beneficially.
  - d. Ramsey County will continue to provide approximately the same level of convenience for County residents to bring in leaves in the spring and fall as in 2004 (7 sites, open 38 hours per week, weather permitting).
  - e. Ramsey County will continue to provide compost for County residents and government and non-profit entities to take, at no charge, when available.
  - f. Ramsey County will continue to offer wood mulch to County residents to take, at no charge, when available.
  - g. The Dept. of Public Health will continue to explore opportunities to work with other public entities (e.g., Ramsey Co. Public Works) in managing the yard waste sites.
- YW Strategy #2. Ramsey County will inform residents about yard waste collection options, and will ensure that yard waste reduction messages (related to lawn management, backyard composting, and tree and shrub care, along with pesticide management) are widely disseminated residents.

## **Processing**

### **Ramsey County-Specific Policies**

- Processing Policy #1. Consistent with the State hierarchy, Ramsey County continues to affirm processing of waste into energy or by composting as the preferred MSW management strategy (over landfilling) for waste that is not reduced or recycled. This policy applies both to MSW generated throughout the county and specifically to waste generated by public entities.
- Processing Policy #2. Ramsey County will support a merchant approach at the Resource Recovery Facility in Newport upon termination of the Service Agreement, consistent with the regional strategy. As part of that merchant approach, the County will seek to assure:
- a. Waste haulers that serve Ramsey County will have access to the Facility,
  - b. Public entity waste will be accepted at the lowest price offered at the Facility,
  - c. The Facility will be maintained as a resource recovery facility for the purpose of recovering materials and energy from waste, and

- d. The County has an option to acquire the Facility should NRG or its successor decide to no longer use the Facility to process waste. The County intends to eliminate the subsidy for the Facility after termination of the Service Agreement, and will monitor merchant operations for effectiveness.
- Processing Policy #3. Ramsey County supports a variety of waste processing methods for waste that is not reduced or recycled. These methods include the proven RDF (refuse-derived fuel) technology at the Resource Recovery Facility in Newport.
- Processing Policy #4. Ramsey County will intervene in the market and use public funds to encourage processing only when necessary, and in a cost-efficient manner, and will not encourage processing in a manner that discourages reduction or recycling.

### **Ramsey County Supporting Initiatives**

- Processing CSI #1. Ramsey and Washington Counties will work to optimize the amount of MSW delivered to and processed at its contracted resource recovery facility [in Newport] until the end of the contract [termination of the Service Agreement].
- Processing CSI #2. Ramsey and Washington Counties will promote food waste and organic waste diversion, with preference for waste reduction and recycling.

### **Ramsey County Strategies Derived from Regional Strategies**

- Processing Strategy #1. Under Regional Outcome #1, Regional Strategy #3: SWMCB *MEMBER COUNTIES* will manage wastes generated by the county in accordance with the Policy Plan, the Master Plan and State law, and will work with public entities so that their waste is managed in the same manner.
- Processing Strategy #2. Under Regional Outcome #2, Regional Strategy #3: SWMCB will encourage its *MEMBER COUNTIES*, individually or jointly, to retain a first option to purchase the RDF facilities if, after termination of the Service Agreements, the facilities are to be closed or converted to a non-processing use.
- Processing Strategy #3. Under Regional Outcome #3, Regional Strategy #4: The SWMCB and its *MEMBER COUNTIES* will work with public entities and private industry so that waste is delivered to the processing facility best suited to manage it.
- Processing Strategy #4. Under Regional Outcome #4, Regional Strategy #1: The SWMCB and its *MEMBER COUNTIES* will encourage public institutions and food service/production industries to reduce, reuse, recycle, or compost food waste and/or organic materials by providing technical information and assistance.

### **Ramsey County-Specific Strategies**

- Processing Strategy #5. Ramsey County will work with the SWMCB to shift resources and effort to higher levels of the hierarchy, including waste and toxicity reduction, recycling and reuse, and including source-separated food waste and organics management.

- Processing Strategy #6. Until termination of the Service Agreement for the Resource Recovery Facility in Newport, Ramsey County will continue to coordinate resource recovery activities at the Facility with Washington County through participation in the Ramsey/Washington County Resource Recovery Project.
- Processing Strategy #7. Ramsey County will work with Washington County on future waste processing issues, such as monitoring merchant operations and exploring new processing opportunities.
- Processing Strategy #8. Until termination of the Service Agreement for the Resource Recovery Facility in Newport, Ramsey County will work with Washington County and the Resource Recovery Project to devote resources to identify and manage other waste streams from processing that can be more appropriately reduced, recycled, or composted.
- Processing Strategy #9. Both until termination of the Service Agreement for the Resource Recovery Facility in Newport and during merchant operations, Ramsey County will inform and work with municipalities and refuse haulers regarding methods to reduce delivery of unacceptable or non-processible materials to the Facility.
- Processing Strategy #10. Ramsey County will work with Washington County and through the Ramsey/Washington County Resource Recovery Project to enhance education to residents and businesses.
- Processing Strategy #11. Ramsey County will work with public entities to ensure MSW is delivered to a processing facility.

## **Landfilling (LF)**

### **Ramsey County Supporting Initiatives**

- LF CSI #1. Ramsey and Washington Counties will continue to evaluate bioreactors and landfill leachate recirculation as possible technologies to manage solid waste.

### **Ramsey County Strategies Derived from Regional Strategies**

- LF Strategy #1. Under Regional Outcome #1, Regional Strategy #4: *SWMCB MEMBER COUNTIES* will continue to use a variety of compliance strategies, including education, consultation, technical assistance, licensing, inspection, and enforcement, to assure that regulated solid waste is properly managed.
- LF Strategy #2. Under Regional Outcome #4, Regional Strategy #3: *SWMCB MEMBER COUNTIES* will use responsible waste management principles when arranging for landfilling of waste and encourage public entities within their boundaries to do the same.

## **NonMSW Management**

### **Ramsey County Supporting Initiatives**

- NonMSW CSI #1. Ramsey County will lead a regional discussion on expanding the licensing of

solid waste haulers to include haulers of nonMSW.

### **Ramsey County Strategies Derived from Regional Strategies**

- NonMSW Strategy #1. Under Regional Outcome #1, Regional Strategy #1: The SWMCB and its *MEMBER COUNTIES* will support research initiatives of the State, trade associations, and other organizations pursuing the beneficial reuse of nonMSW, including, but not limited to, post-consumer shingles, MSW ash, coal ash, sewage sludge ash, street sweepings, and foundry sand in road construction projects.
- NonMSW Strategy #2. Under Regional Outcome #1, Regional Strategy #2: The SWMCB and its *MEMBER COUNTIES* will promote the beneficial reuse of nonMSW materials as specified in the MPCA solid waste utilization rules.
- NonMSW Strategy #3. Under Regional Outcome #1, Regional Strategy #4: Every two years, the SWMCB and its *MEMBER COUNTIES*, working with the private sector, will target an industrial, construction, and/or demolition waste material for region-wide waste reduction, reuse, recycling, or processing promotions based on market availability to recover the material and greatest potential to impact the nonMSW stream.
- NonMSW Strategy #4. Under Regional Outcome #1, Regional Strategy #5: The SWMCB, its *MEMBER COUNTIES*, and the State will promote and support facilities for reuse, recycling, and processing of wood waste as an alternative to open burning and indiscriminate land disposal.
- NonMSW Strategy #5. Under Regional Outcome #1, Regional Strategy #6: The SWMCB and its *MEMBER COUNTIES* will promote options for proper disposal of nonMSW materials that cannot be reduced, reused, recycled, or processed.
- NonMSW Strategy #6. Under Regional Outcome #1, Regional Strategy #8: SWMCB *MEMBER COUNTIES* will lead by example in reducing, reusing, and recycling nonMSW in county operations and will encourage other public entities to do the same.
- NonMSW Strategy #7. Under Regional Outcome #1, Regional Strategy #9: SWMCB *MEMBER COUNTIES* will continue to use a variety of compliance strategies, including education, consultation, technical assistance, licensing, inspection, and enforcement, to assure that regulated nonMSW is properly managed.
- NonMSW Strategy #8. Under Regional Outcome #1, Regional Strategy #10: The SWMCB and *MEMBER COUNTIES* will evaluate expanding the licensing of solid waste haulers to include haulers of nonMSW, and implement recommendations where appropriate.
- NonMSW Strategy #9. Under Regional Outcome #3, Regional Strategy #3: SWMCB *MEMBER COUNTIES* will work to incorporate sustainable building principles into planning, designing, and construction contracts for government and government sponsored buildings, including assessing the potential for reduction, reuse, and recycling and/or processing of materials in county deconstruction and remodeling projects and will encourage other public entities to do the same.

## **Ramsey County-Specific Strategies**

- NonMSW Strategy #10. To encourage public entities to appropriately manage nonMSW generated by their operations, Ramsey County will continue to provide technical assistance and consultation to ensure appropriate management of nonMSW at municipally-sponsored cleanup events.
- NonMSW Strategy #11. Ramsey County will work with municipalities to encourage appropriate management of demolition-, construction-, and deconstruction-related nonMSW throughout the county, including addressing permit issues and disseminating information.
- NonMSW Strategy #12. Ramsey County will continue to work with generators of medical waste, medical facilities and service providers to foster appropriate management of all wastes, including encouraging waste and toxicity reduction and recycling where appropriate.

## **Regulation**

### **Ramsey County-Specific Policies**

The following includes Ramsey County-specific regulation-related policies found in other chapters of this plan.

- TR Policy #6. Ramsey County has the following roles with respect to regulated hazardous waste:
  - a) To assure compliance with applicable laws related to the cradle-to-grave management of hazardous waste, as required by Minnesota Statute §473.811; and
  - b) To provide information, technical assistance, and consultation services to hazardous waste generators regarding the use and management of hazardous materials.
- TR Policy #7. Ramsey County will continue to implement regulated hazardous waste compliance programs focused on risk. As such, regulatory efforts and fees charged for regulated activities will continue to be based on those factors approved by the County in 2000.

### **Ramsey County Supporting Initiatives**

The following includes Ramsey County supporting initiatives found in other chapters of this plan.

- NonMSW CSI #1. Ramsey County will lead a regional discussion on expanding the licensing of solid waste haulers to include haulers of nonMSW.

### **Ramsey County-Specific Strategies**

The following includes Ramsey County-specific strategies found in other chapters of this plan plus an additional strategy.

- Regulatory Strategy #1. Ramsey County will create partnerships with municipalities and haulers to provide increased opportunities for disposal of difficult materials to dispose, such as bulky items, in order to reduce illegal dumping and burning. The County will work with haulers and municipalities to identify violators of local mandatory collection ordinances, in order to assure that waste is being properly managed and not illegally dumped or burned.

- TR Strategy #8. Under Regional Outcome #3, Regional Strategy #4: SWMCB MEMBER COUNTIES will continue to use a variety of compliance strategies, including education, consultation, technical assistance, licensing, inspection and enforcement, to assure that regulated solid and hazardous waste is properly managed.
- TR Strategy #17. For regulated hazardous waste, Ramsey County will continue to assure compliance with applicable laws related to hazardous waste management by having a regulatory program in place that ensures generators and facilities properly manage hazardous waste.
- TR Strategy #18. Ramsey County will continue to require all waste haulers and transfer stations operating in the county to remove and properly manage any hazardous waste materials to assure that regulated hazardous waste is properly managed, and that regulated entities are aware of options that reduce the quantity and hazardous character of waste.
- TR Strategy #19. Ramsey County will continue to require, as a condition of licensure, that transfer stations operating in the county have procedures in place to identify, separate, manage, and document any hazardous waste or problem materials received.
- TR Strategy #20. Ramsey County will continue to require, as a condition of licensure, that waste haulers operating in the county have procedures in place to work with customers to assure that hazardous waste or nonMSW is not collected with MSW, and also that procedures are in place to separate and properly manage hazardous waste and nonMSW that is inadvertently collected by the hauler. The County will work with haulers to inform customers about regulations related to nonMSW and hazardous waste.
- TR Strategy #21. Ramsey County will continue its hazardous waste licensing fee structure that is based on risk rather than generator size, and also provides financial incentives to generators to reduce generation of hazardous waste.
- WRRR Strategy #10. Ramsey County will review plans submitted by licensed food and beverage establishments, to ensure that licensees meet recycling requirements in the Food Protection Ordinance by Ramsey County.
- LF Strategy #1. Under Regional Outcome #1, Regional Strategy #4: SWMCB MEMBER COUNTIES will continue to use a variety of compliance strategies, including education, consultation, technical assistance, licensing, inspection, and enforcement, to assure that regulated solid waste is properly managed.
- NonMSW Strategy #7. Under Regional Outcome #1, Regional Strategy #9: SWMCB MEMBER COUNTIES will continue to use a variety of compliance strategies, including education, consultation, technical assistance, licensing, inspection, and enforcement, to assure that regulated nonMSW is properly managed.

## **Cost and Finance**

### **Ramsey County-Specific Policies**

The following includes Ramsey County-specific cost and finance-related policies found in other chapters of this plan, plus additional policies.

-

- Cost/Finance Policy #1. Ramsey County will continue to use the County Environmental Charge as a funding tool. The CEC applies to mixed municipal solid waste (MSW), and the County can choose to apply it to nonMSW waste as well.
- Cost/Finance Policy #2. The County will mitigate the effect of CEC rate increases for 2005 and 2006, keeping the rates at 28% and 53% for residential and non-residential generators, respectively, by using fund balance for those two years.
- Cost/Finance Policy #3. The policy related to the use of fund balance is as follows:
  - a. Designate \$1,000,000 of fund balance and maintain that level for long-term for tort liability.
  - b. Continue to designate \$500,000 of fund balance as a recyclable market support fund.
  - c. Set aside \$3.5 million to mitigate the effect of CEC rate increases for 2005 and 2006.
  - d. Establish the following priorities for use of solid waste fund balance by Ramsey County, in this order:
    - One-time waste management related expenses, such as purchase or development of fixed assets or capital equipment;
    - Maintenance of waste-related capital equipment/sites; and
    - Operating expenses that present significant opportunities for meeting environmental goals.

*Toxicity Reduction (TR)*

- TR Policy #2. Ramsey County will a) Provide for HHW management services at a level of convenience and financial accessibility that discourages improper management while not providing a disincentive for reducing the amount of HHW produced in the future; and b) Continue to seek to share the potential risk of managing HHW with the State of Minnesota.
- TR Policy #3. Ramsey County's HHW collection program will provide for management of HHW in a cost-effective manner that minimizes risks to public health, occupational health, property, and the environment.
- TR Policy #4. Ramsey County will continue to contract with the private sector for HHW collection services, provided that doing so will protect public health and the environment and that cost and risk factors are similar to or more favorable than public operation of part or all of HHW collection services.
- TR Policy #7. Ramsey County will continue to implement regulated hazardous waste compliance programs focused on risk. As such, regulatory efforts and fees charged for regulated activities will continue to be based on those factors approved by the County in 2000.

*Waste Reduction/Reuse/Recycling (WRRR), Including Yard Waste (YW)*

- WRRR Policy #6. Ramsey County requires each municipality to be responsible for developing a long-term financing mechanism to fund its residential recycling program.
- WRRR Policy #7. Ramsey County allows municipalities use of the County's statutory service charge authority, through joint powers agreements with the County, to collect a municipal

recycling fee for the municipality.

- WRRR Policy #9. Ramsey County will annually pass through a portion of SCORE funds received by the County to municipalities on a per capita basis to provide partial support of municipal recycling and related programs, subject to SCORE grant requirements. Each year, the County will allocate the same share of the total SCORE funds it receives as was allocated to municipalities in 2004.
- WRRR Policy #11. If a municipality fails to demonstrate that recycling service is available to all residents at their place of residence, the County will provide for such service. The County will retain any portion of the municipality's SCORE grant sufficient to cover the County's cost to provide for that service, and will charge the appropriate party in the municipality for costs not covered by the municipality's SCORE grant.
- YW Policy #2. Ramsey County will continue to provide sites for the management of yard waste in a manner that is as convenient and financially accessible to County residents as reasonably possible.
- YW Policy #6. Municipally-sponsored management of yard waste is an eligible activity of SCORE (or similar) grants from the County and city service charges collected through the County's waste management service charge authority.

### *Processing*

- Processing Policy #2 (part). Ramsey County will support a merchant approach at the Resource Recovery Facility in Newport upon termination of the Service Agreement, consistent with the regional strategy....The County intends to eliminate the subsidy for the Facility after termination of the Service Agreement, and will monitor merchant operations for effectiveness.
- Processing Policy #4. Ramsey County will intervene in the market and use public funds to encourage processing only when necessary, and in a cost-efficient manner, and will not encourage processing in a manner that discourages reduction or recycling.

### **Ramsey County Supporting Initiatives**

The following includes Ramsey County supporting initiatives found in other chapters of this plan.

- WRRR CSI #1. Ramsey and Washington Counties will examine the effectiveness of a hauler-based service charge on encouraging reduction and recycling.
- Processing CSI #1. Ramsey and Washington Counties will work to optimize the amount of MSW delivered to and processed at its contracted resource recovery facility [in Newport] until the end of the contract [termination of the Service Agreement].

### **Ramsey County-Specific Strategies**

The following includes strategies found in other chapters of this plan, plus additional strategies.

- Cost/Finance Strategy #1. The County will continue to reach out to residential and nonresidential generators, through public information and technical assistance, to increase awareness of the CEC and associated benefits with reducing and recycling waste.
- Cost/Finance Strategy #2. The County will consider the opportunity to use the County Environmental Charge currently collected for resource recovery purposes for use in the County's efforts to shift resources and effort to higher levels of the hierarchy, including waste and toxicity reduction, recycling and reuse, and including source-separated food waste and organics management, and also to address issues such as illegal dumping and other processing opportunities.
- TR Strategy #21. Ramsey County will continue its hazardous waste licensing fee structure that is based on risk rather than generator size, and also provides financial incentives to generators to reduce generation of hazardous waste.
- WRRR Strategy #12. Ramsey County will provide support for recycling markets for municipalities through the existing County Recycling Markets Support Fund and its guidelines.
- YW Strategy #1.a. Ramsey County will provide for operation of its yard waste sites, as detailed below, through at least 2010. The County will periodically reevaluate aspects of its yard waste system, which could lead to changes in operation.
  - a. Ramsey County will continue to provide services to County residents at its yard waste sites for disposal of yard waste without user fees at the sites.

## **Addendum to Regional/Ramsey County Solid Waste Master Plan**

### **Introduction**

The following includes selected updates on solid waste issues to the Master Plan, which was approved by the Ramsey County Board of Commissioners in 2004.

### **New Agreement with RRT**

The county solid waste master plan refers to an agreement between Ramsey and Washington Counties and NRG, Inc., for waste processing services at NRG's RDF (refuse derived fuel) processing facility in Newport, Minnesota. To ensure that processing of waste into energy would continue, Ramsey and Washington Counties on January 1, 2007, entered into a new six-year agreement with Resource Recovery Technologies, Inc. (RRT), which had purchased and taken over operation of the Newport facility from NRG. This new agreement includes numerous changes from the previous agreement with NRG (for example, tipping fees for users of the Newport facility were previously set by the Counties but are now set by RRT).

### **Updating the County Solid Waste Ordinance**

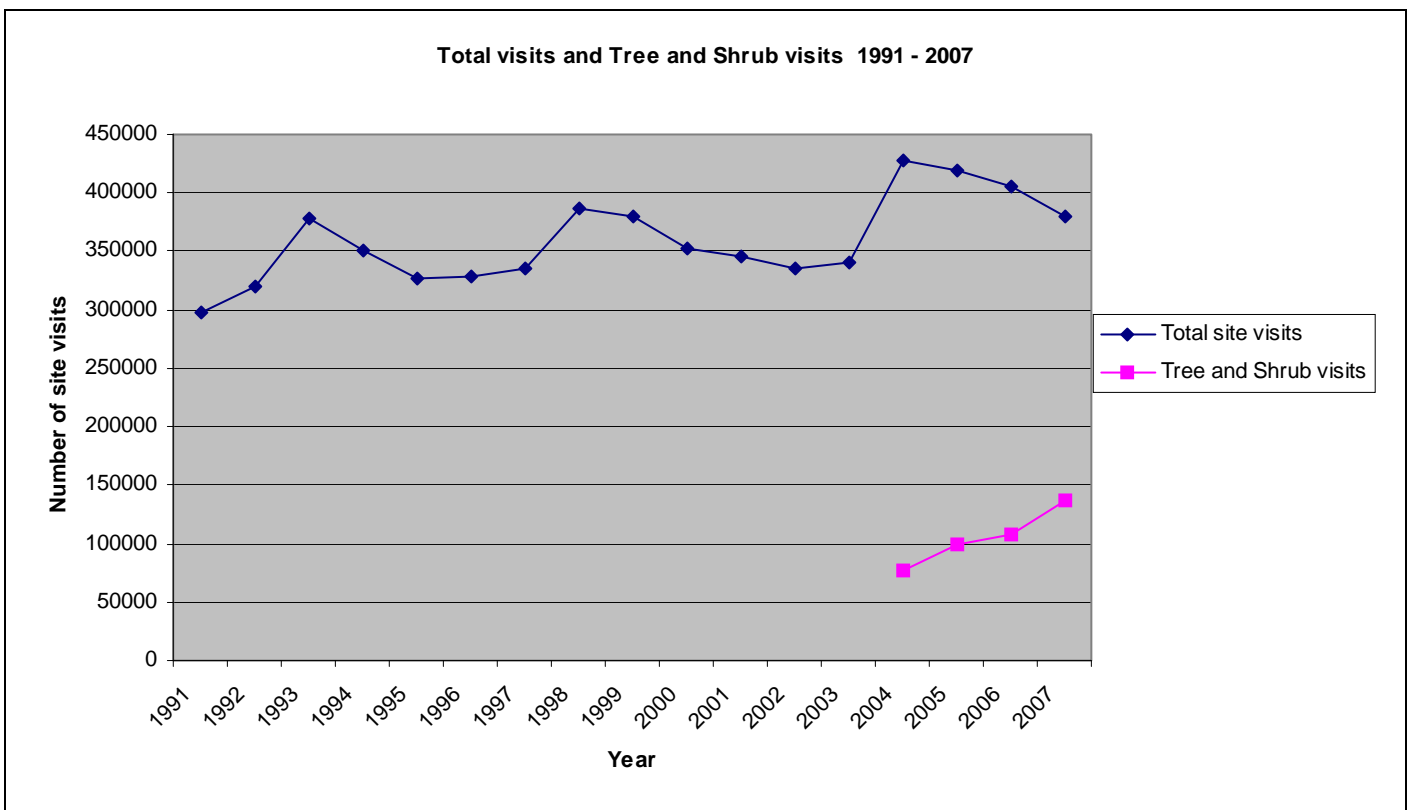
The County will be updating its solid waste ordinance during 2008-2009.

### Acceptance of Brush and Tree Waste at County Yard Waste Sites

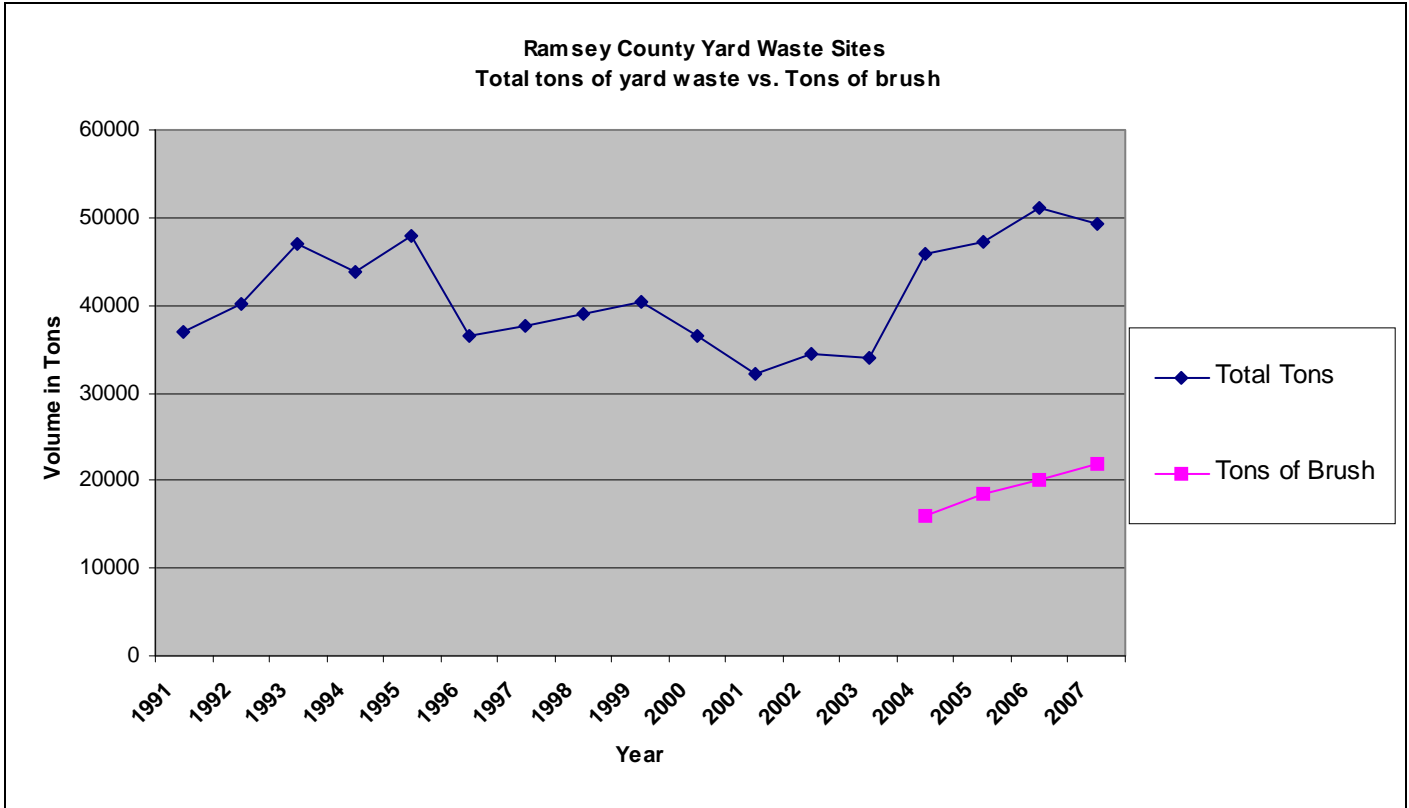
On November 3, 2003, the County Board authorized acceptance of brush and tree waste from residents at four of the County's seven yard waste sites, which began in the spring of 2004. The text of the minutes and approved resolution from the November 3, 2003, Board meeting is included on the following page.

**Figure RC-8** and **Figure RC-9** update the information in the County's Master Plan on yard waste site visits and volumes received.

**Figure RC-8**



**Figure RC-9**



On November 4, 2003, the Ramsey County Board of Commissioners took the following action regarding tree and shrub waste.

**Agenda Item: PUBLIC HEALTH – Study of Accepting Tree and Shrub Waste at Yard Waste Sites and Use at Saint Paul Cogeneration**

Commissioner Rettman introduced the following resolution and moved its adoption, seconded by Commissioner Haigh. Commissioner Rettman said this new service will be enthusiastically received by all citizens. She thanked the Board for their support of this item.

Roll Call: Ayes – Wiessner, Bennett, Haigh, Ortega, Reinhardt, Rettman, McDonough – 7. Nays – 0. (2003-354)

WHEREAS, Ramsey County has provided yard waste collection services for residential leaves, grass clippings and other “soft-bodied” yard waste in some manner since October, 1983; and

WHEREAS, The State of Minnesota, in Minnesota Statutes Section 115A. 931, prohibits any person from placing yard waste, including shrub and tree waste, in mixed municipal solid waste, in a landfill, or in a resource recovery facility; and

WHEREAS, The Regional/County Solid Waste Master Plan, adopted by the Ramsey County Board of Commissioners on February 2, 1999 (Resolution No. 99-043), includes a Ramsey

County Policy that states “Ramsey County will work with municipalities and private firms involved in tree and shrub waste management to ensure that opportunities for managing residentially generated tree and shrub waste are available at a level of convenience, cost and consistency such that residents will have an incentive to maintain or enhance the quality of the private urban forest;” and

WHEREAS, Saint Paul Cogeneration is a private firm in Ramsey County that has developed a co-generation facility for the production of energy from biomass fuels, including tree and shrub waste, and is working with other public and private entities to use waste wood for energy production; and

WHEREAS, The study on Public Collection conducted by Ramsey and Washington Counties in 2001 and 2002 identified a need to address illegal dumping of solid waste, and stated that Ramsey County would create partnerships to provide increased opportunities for disposal of difficult materials, such as brush; and

WHEREAS, On September 23, 2003, the County Board directed the Department of Public Health to study the possibility of creating free resident drop-off service for tree and shrub waste at some or all of the County’s yard waste collection sites; and

WHEREAS, On October 21, 2003, the Department presented the requested report, which was discussed by the County Board on that date; Now, Therefore, Be It

RESOLVED, The Ramsey County Board of Commissioners hereby directs the Department of Public Health, working with other County Departments as appropriate, to implement plans to expand yard waste collection services through the collection of tree and shrub waste at the County yard waste sites in Arden Hills, White Bear Township, and Saint Paul (East Side and Midway); and Be It Further

RESOLVED, The Board hereby authorizes the County Manager to enter into a no-cost arrangement with Saint Paul Cogeneration to assure a market for woody waste collected at the yard waste sites; and Be It Further

RESOLVED, The Board hereby authorizes the Department of Public Health to procure services necessary to implement the expanded service, including consideration of an agreement with Saint Paul Parks – Forestry Division, and the County Manager is hereby authorized to enter into agreements necessary to implement the expanded service; and Be It Further

RESOLVED, The Board hereby authorizes the Department to seek changes in permits necessary to provide the expanded service; and Be It Further

RESOLVED, The Board hereby directs the Department of Public Health to explore the potential for contracted services that will process and transport woody waste from the yard waste sites to make wood mulch available to residents at those sites at no cost; and Be It Further

RESOLVED, The Board reaffirms the County’s longstanding policy that yard waste sites are for use by Ramsey County residents, and the County will not allow commercial yard waste haulers/collectors or lawn services to use County yard waste sites, and expands this policy to tree and shrub waste and to include tree services; and Be It Further

RESOLVED, The Board hereby increases the personnel complement of the Department of Public Health by 2.2 FTE in order to hire Service Workers to provide for the safe and efficient operation of the four sites that will collect tree and shrub waste.