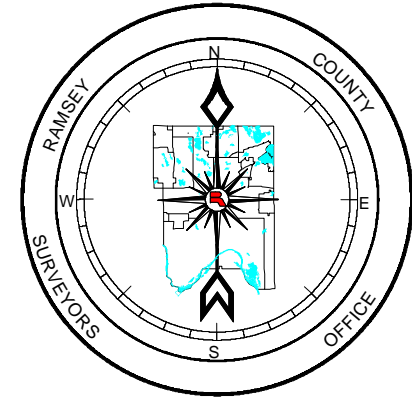
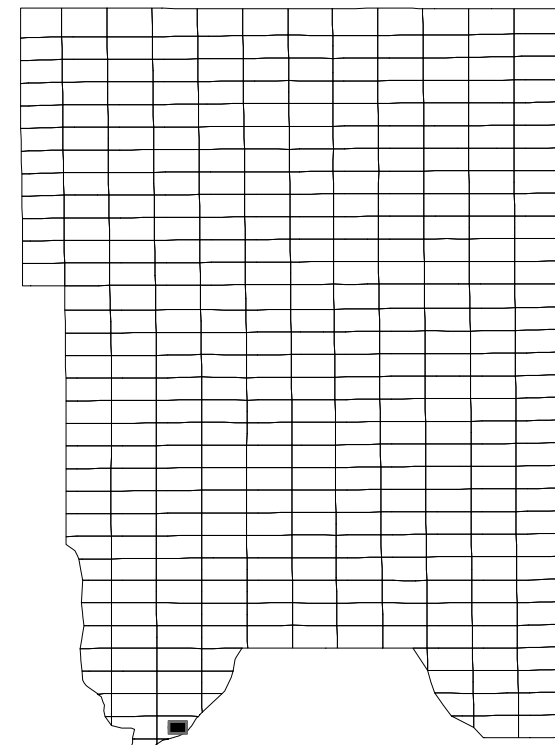


S 1/2  
Sec. 22  
T 28 N  
R 23 W

RAMSEY COUNTY  
MINNESOTA  
PARCEL MAP

Ramsey County Public Works  
Land Survey Division Ramsey  
County GIS Group

Vicinity Map



200 0 200 Feet

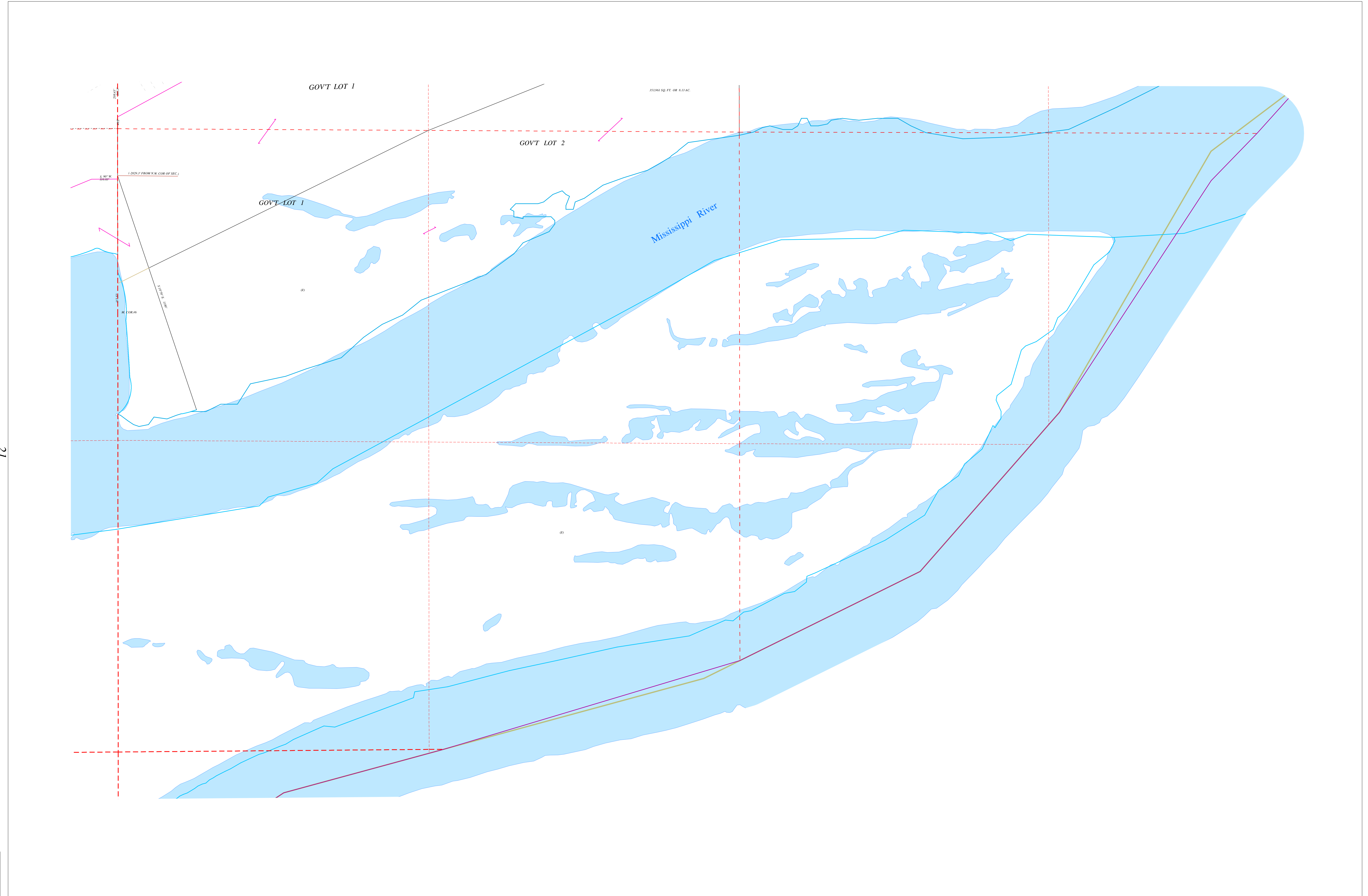
1" = 200'  
1:2400

- Open Water - 2009
- Municipal Boundary

Ramsey County GIS  
Department of Public Works  
1425 Paul Kirkwood Drive  
Arden Hills, Minnesota 55112-3933  
(651) 266-7100

The information on this map is a compilation of Ramsey County Records. THE COUNTY DOES NOT WARRANT OR GUARANTEE THE ACCURACY OF THIS DATA. The County disclaims any liability for any injuries, time delays, or expenses you may suffer if you rely in any manner on the accuracy of this data.

21



22

27

Mon Jan 09 11:11:29 2012

S 1/2 Sec. 22 T 28 N R 23 W

23