

MONUMENT 101

CERTIFICATE OF LOCATION OF GOVERNMENT CORNER

Southwest Corner of Section 7, Township 30 North, Range 23
West, County of Ramsey, State of Minnesota.

At the corner location shown on the sketch

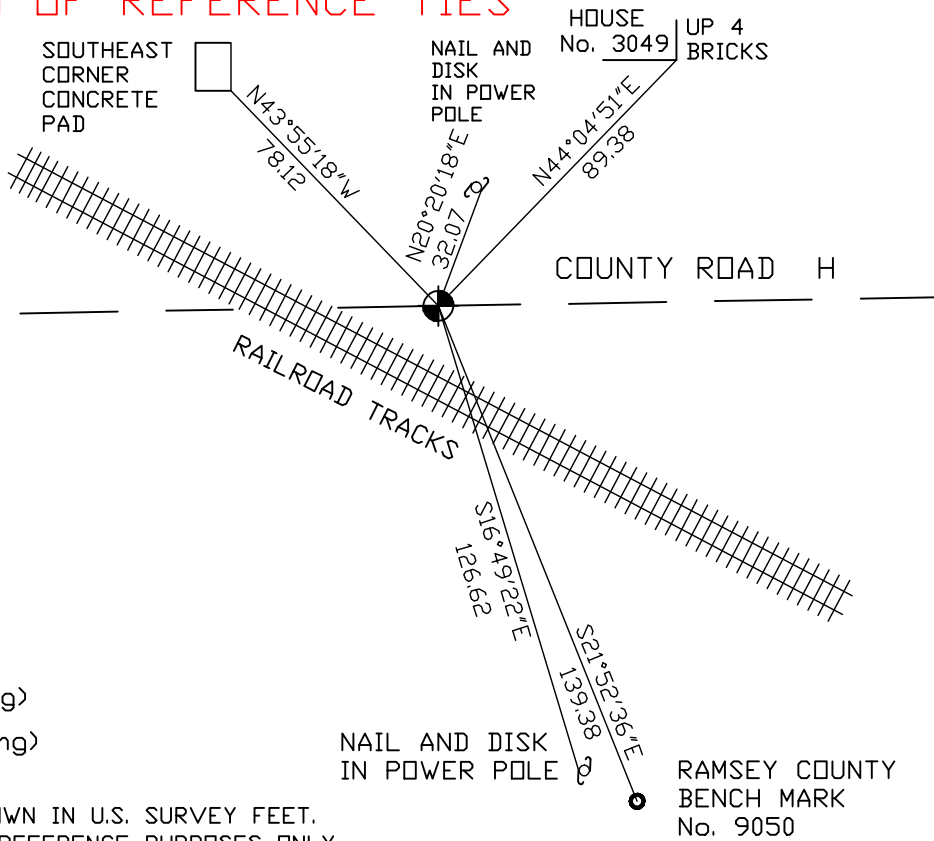
On December 29, 2004 found a cast iron monument.

left monument as found, lowered monument, removed monument (explain)

ON _____ placed a _____



SKETCH OF REFERENCE TIES



RAMSEY COUNTY
NAD83 (1986) DATUM
MONUMENT 101
X=540187.857 (Easting)
Y=210177.569 (Northing)

ALL DISTANCES ARE SHOWN IN U.S. SURVEY FEET.
BEARINGS ARE FOR TIE REFERENCE PURPOSES ONLY.

Statements of evidence relative to this corner are on the following page(s).

I hereby certify that this document and the data contained herein was prepared by me or under my direct supervision this _____ day of _____, 20____.

SIGNATURE
Minnesota License No. _____
 Land Surveyor Professional Engineer
 County Surveyor County Engineer

OFFICE OF COUNTY SURVEYOR
County of Ramsey

I hereby certify that this document was filed in the County Surveyor's office on the _____ day _____, 20____.

David D. Claypool, P.L.S., County Surveyor
By _____, Deputy

MONUMENT 101

Found a cast iron monument flush and retied, August 19, 1974.

Retied monument, January 14, 1992.

Retied monument, October 17, 2000.

Retied monument, December 29, 2004.