

# MONUMENT 118

## CERTIFICATE OF LOCATION OF GOVERNMENT CORNER

North Quarter Corner of Section 16, Township 30 North, Range 22 West, County of Ramsey, State of Minnesota.

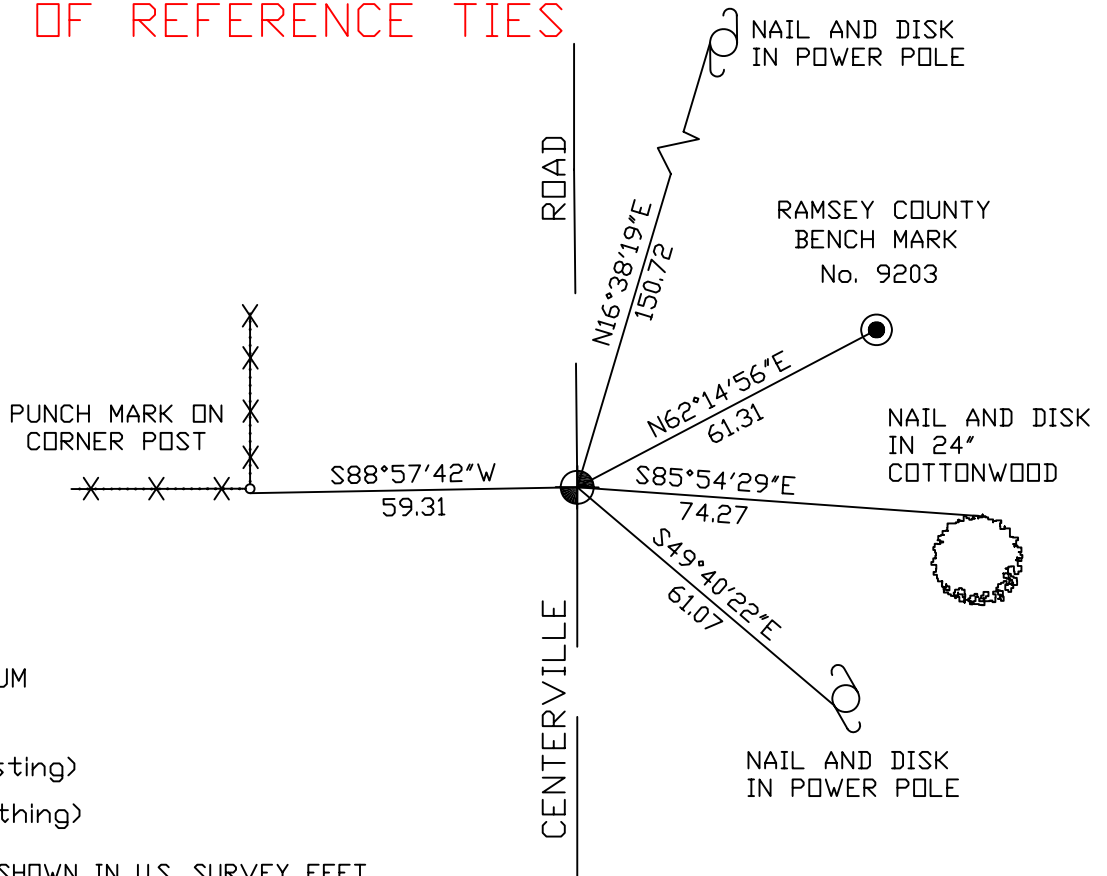
At the corner location shown on the sketch

On November 30, 2004 found a cast iron monument.

left monument as found,  lowered monument,  removed monument (explain)

On \_\_\_\_\_ placed a \_\_\_\_\_

### SKETCH OF REFERENCE TIES



RAMSEY COUNTY  
 NAD83 (1986) DATUM  
 MONUMENT 118  
 X=584478.340 (Easting)  
 Y=210520.027 (Northing)

ALL DISTANCES ARE SHOWN IN U.S. SURVEY FEET.  
 BEARINGS ARE FOR TIE REFERENCE PURPOSES ONLY.

Statements of evidence relative to this corner are on the following page(s).

I hereby certify that this document and the data contained herein was prepared by me or under my direct supervision this \_\_\_\_\_ day of \_\_\_\_\_, 20\_\_\_\_.

SIGNATURE

Minnesota License No. \_\_\_\_\_

- Land Surveyor     Professional Engineer  
 County Surveyor     County Engineer

#### OFFICE OF COUNTY SURVEYOR

County of Ramsey

I hereby certify that this document was filed in the County Surveyor's office on the \_\_\_\_\_ day of \_\_\_\_\_, 20\_\_\_\_.

David D. Claypool, P.L.S., County Surveyor

By \_\_\_\_\_, Deputy

## MONUMENT 118

Found  $\frac{1}{4}$  in. square iron down 0.3 ft.; granite monument found down 0.8 ft., May 23, 1974.

Retied monument, July 2, 1974.

Removed monument for Construction Department, May, 1989.

Reset a 20 in. cast iron monument flush, November 24, 1992.

Retied monument, January 26, 1993.

Retied monument, April 4, 1999.

Retied monument, November 30, 2004.