

MONUMENT 11SC

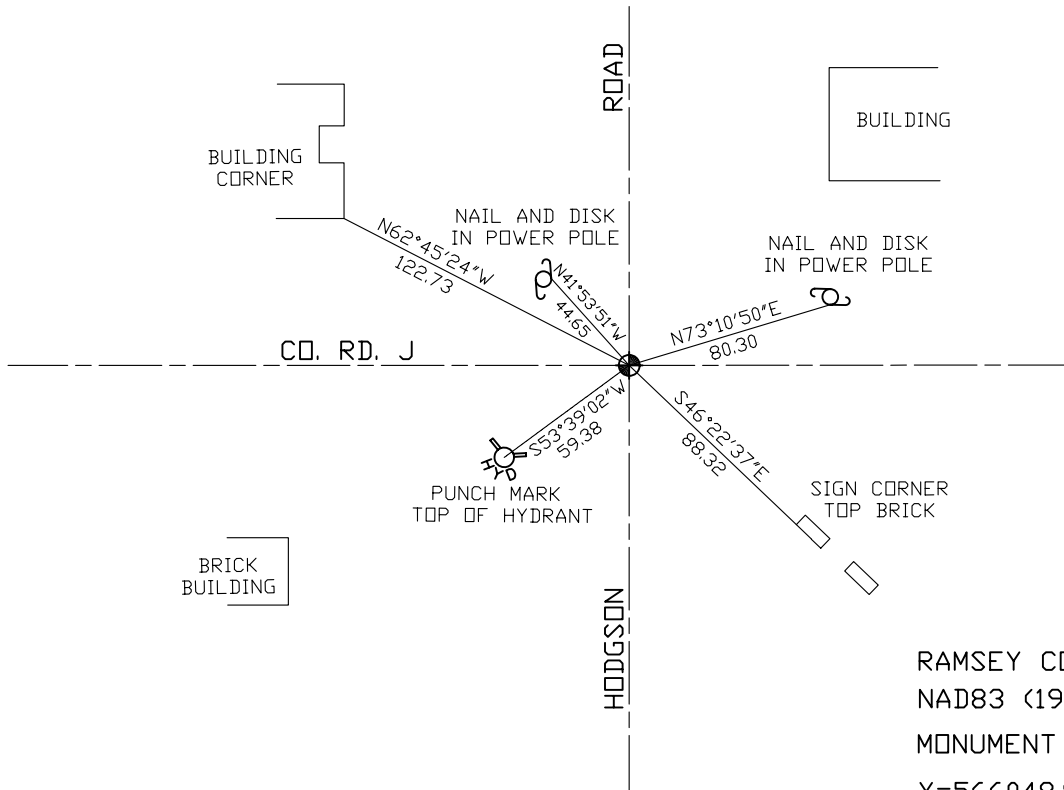
CERTIFICATE OF LOCATION OF GOVERNMENT CORNER

Northeast Corner of Section 2, Township 30 North, Range 23 West,
County of Ramsey, State of Minnesota.

At the corner location shown on the sketch

- On June 15, 2004 found a cast iron monument marked "3RD CORRECTION LINE" (2640.10 ft. east of monument 10SC).
- left monument as found, lowered monument, removed monument (explain)
- On _____ placed a _____

SKETCH OF REFERENCE TIES



RAMSEY COUNTY
NAD83 (1986) DATUM
MONUMENT 11SC
X=566048.900 (Easting)
Y=221529.391 (Northing)
"CLOSING CORNER"
IS 3.38 FT. SOUTH.

BEARINGS ARE FOR TIE REFERENCE PURPOSES ONLY.
ALL DISTANCES ARE SHOWN IN U.S. SURVEY FEET.

Statements of evidence relative to this corner are on the following page(s).

I hereby certify that this document and the data contained herein was prepared by me or under my direct supervision this _____ day of _____, 20____.

SIGNATURE
Minnesota License No. _____
 Land Surveyor Professional Engineer
 County Surveyor County Engineer

OFFICE OF COUNTY SURVEYOR

County of Ramsey

I hereby certify that this document was filed in the County Surveyor's office on the _____ day of _____, 20____.

David D. Claypool, P.L.S., County Surveyor

By _____, Deputy

MONUMENT 11SC

Found iron in concrete. Granite monument, down 0.31 ft.
Placed bolt and cast iron cap, July 23, 1975.

Retied monument, July 29, 1975.

Retied cast iron monument, February 20, 1992.

Cap and bolt removed by Mn/DOT in the summer of 1995.
Dug down +/- 5 in. and found granite monument. Set a short cast iron monument. Placed P.K. nails for "3RD CORRECTION LINE" monument, 3.38 ft. northerly of "Closing Corner" (did not check ties for "Closing Corner"), August 23, 1995.

Monument 11SC, a cast iron standard corner (SC) monument marked, "3RD CORRECTION LINE", has been set 3.38 ft. north of the "Closing Corner" (original granite monument location), October 18, 1996.

Tied monument 11SC, October 8, 1998.

Retied monument, June 15, 2004.