

MONUMENT 120

CERTIFICATE OF LOCATION OF GOVERNMENT CORNER

North Quarter Corner of Section 15, Township 30 North, Range 22 West, County of Ramsey, State of Minnesota.

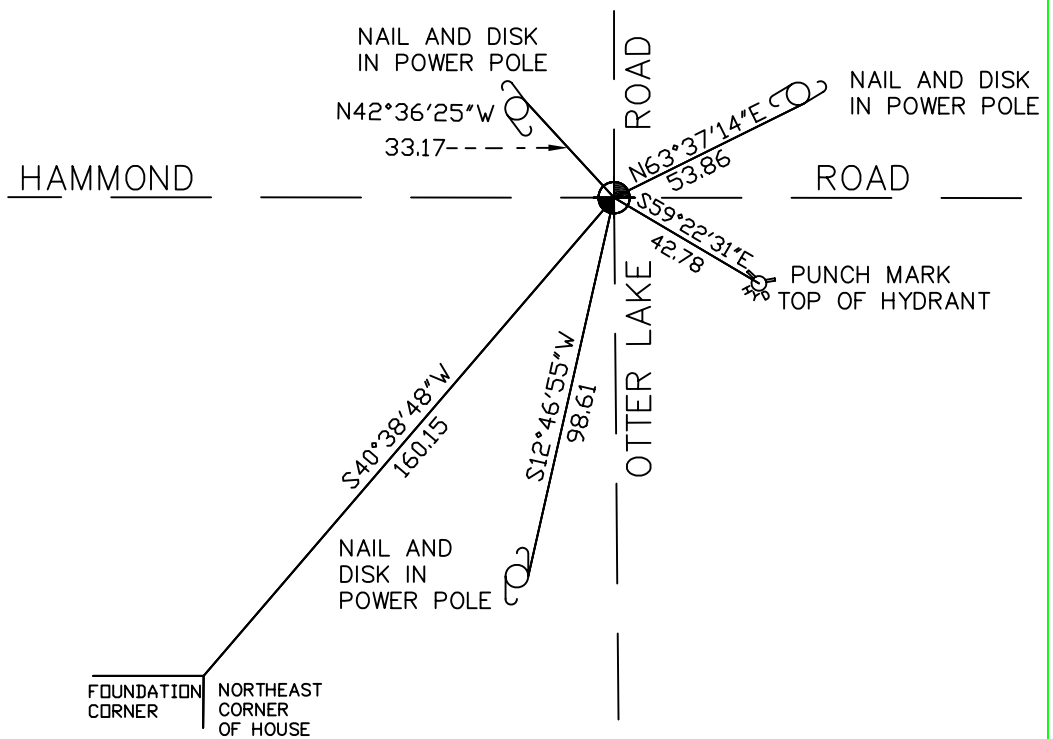
At the corner location shown on the sketch

On September 24, 2004 found a cast iron monument.

left monument as found, lowered monument, removed monument (explain)

On _____ placed a _____

SKETCH OF REFERENCE TIES



RAMSEY COUNTY
NAD83 (1986) DATUM
MONUMENT 120

X = 589748.140 (Easting)
Y = 210548.368 (Northing)

ALL DISTANCES ARE SHOWN IN U.S. SURVEY FEET.
BEARINGS ARE FOR TIE REFERENCE PURPOSES ONLY.

Statements of evidence relative to this corner are on the following page(s).

I hereby certify that this document and the data contained herein was prepared by me or under my direct supervision this _____ day of _____, 20____.

SIGNATURE

Minnesota License No. _____

- Land Surveyor Professional Engineer
 County Surveyor County Engineer

OFFICE OF COUNTY SURVEYOR

County of Ramsey

I hereby certify that this document was filed in the County Surveyor's office on the ____ day of _____, 20____.

David D. Claypool, P.L.S., County Surveyor

By _____, Deputy

MONUMENT 120

Found a granite monument, down 0.3 ft.; placed a cast iron cap and bolt monument and cemented into place, May 21, 1974.

Retied cast iron monument, June 20, 1974.

Removed cast iron cap and bolt during sewer construction; replaced with a 20 in. cast iron monument, May 7, 1979.

Retied monument, down 0.2 ft., September 21, 1989.

Retied monument, September 30, 1999.

Retied monument, September 24, 2004.