

MONUMENT 121

CERTIFICATE OF LOCATION OF GOVERNMENT CORNER

Southwest Corner of Section 11, Township 30 North, Range 22 West,
County of Ramsey, State of Minnesota.

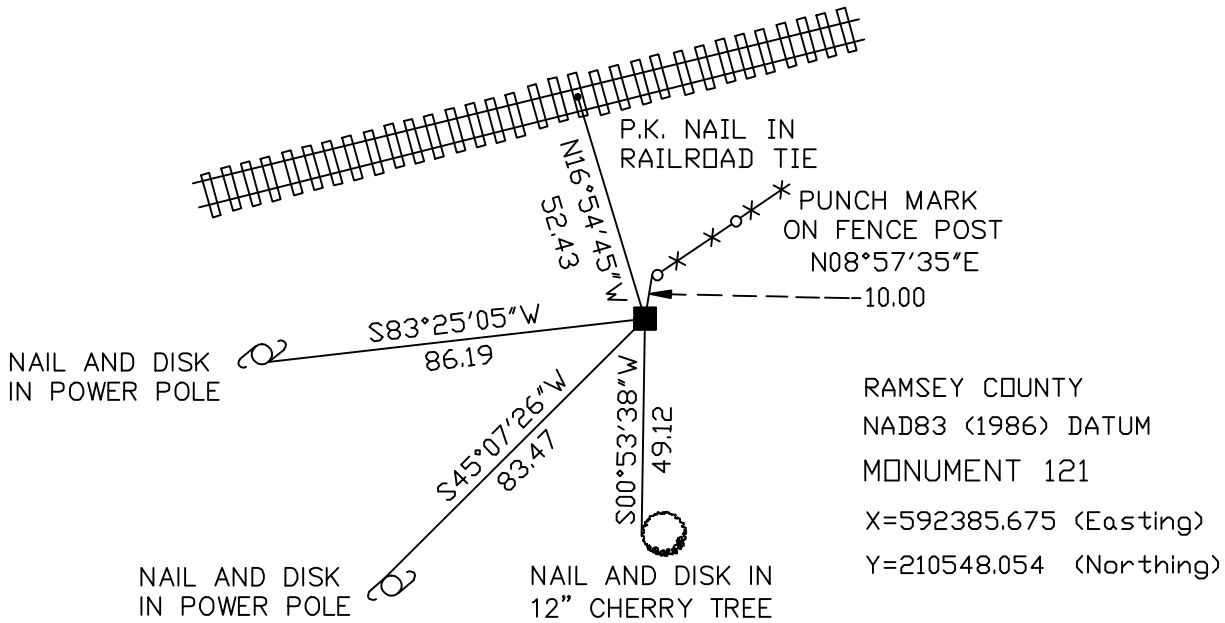
At the corner location shown on the sketch

On November 15, 2004 found a granite monument.

left monument as found, lowered monument, removed monument (explain)

On _____ placed a _____

SKETCH OF REFERENCE TIES



ALL DISTANCES ARE SHOWN IN U.S. SURVEY FEET.
BEARINGS ARE FOR TIE REFERENCE PURPOSES ONLY.

Statements of evidence relative to this corner are on the following page(s).

I hereby certify that this document and the data contained herein was prepared by me or under my direct supervision this _____ day of _____, 20____.

SIGNATURE _____

Minnesota License No. _____

Land Surveyor Professional Engineer
 County Surveyor County Engineer

OFFICE OF COUNTY SURVEYOR

County of Ramsey

I hereby certify that this document was filed in the County Surveyor's office on the ____ day of _____, 20____.

David D. Claypool, P.L.S., County Surveyor

By _____, Deputy

MONUMENT 121

**Found granite monument flush with ground, retied monument,
May 21, 1974.**

Retied monument, October 4, 1999.

Set sign and post 0.8 ft. west of monument, October 27, 1999.

Retied monument, November 15, 2004.