

MONUMENT 122

CERTIFICATE OF LOCATION OF GOVERNMENT CORNER

South Quarter Corner of Section 11, Township 30 North, Range 22 West, County of Ramsey, State of Minnesota.

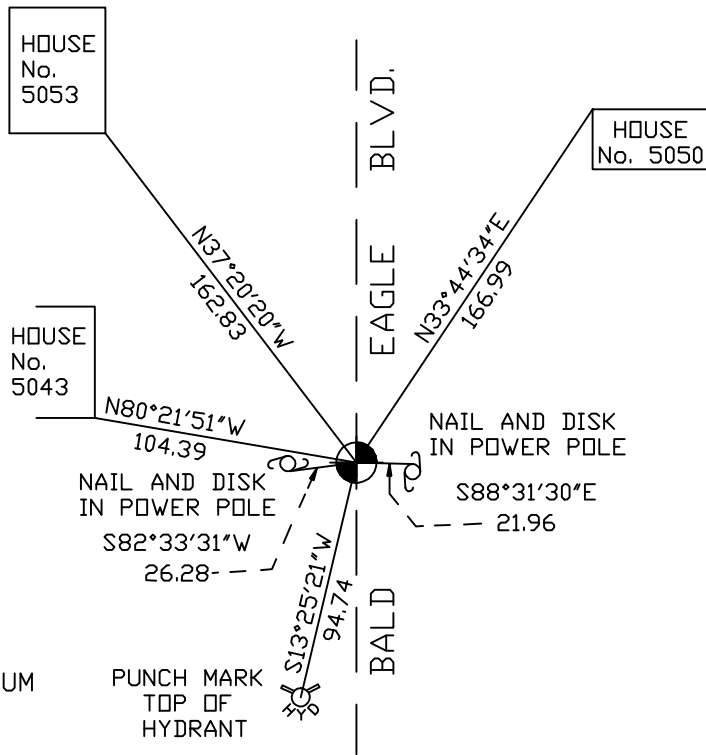
At the corner location shown on the sketch

On November 15, 2004 found a cast iron monument.

left monument as found, lowered monument, removed monument (explain)

On _____ placed a _____

SKETCH OF REFERENCE TIES



RAMSEY COUNTY
NAD83 (1986) DATUM
MONUMENT 122

PUNCH MARK
TOP OF
HYDRANT

X=595026.861 (Easting)
Y=210543.503 (Northing)

ALL DISTANCES ARE SHOWN IN U.S. SURVEY FEET.
BEARINGS ARE FOR TIE REFERENCE PURPOSES ONLY.

Statements of evidence relative to this corner are on the following page(s).

I hereby certify that this document and the data contained herein was prepared by me or under my direct supervision this _____ day of _____, 20____.

SIGNATURE

Minnesota License No. _____

- Land Surveyor Professional Engineer
 County Surveyor County Engineer

OFFICE OF COUNTY SURVEYOR

County of Ramsey

I hereby certify that this document was filed in the County Surveyor's office on the ____ day of _____, 20____.

David D. Claypool, P.L.S., County Surveyor

By _____, Deputy

MONUMENT 122

Found a granite monument down 0.2 ft.; placed a cast iron cap and bolt monument in concrete, May 21, 1974.

Retied monument, November 21, 1974.

Retied monument, January 31, 1992.

Found monument loose and removed, July 23, 1996.

Set a cast iron cap and bolt monument in concrete, July 24, 1996.

Retied monument, September 23, 1999.

Retied monument, November 15, 2004.