

# MONUMENT 123E

CERTIFICATE OF LOCATION OF GOVERNMENT CORNER  
 Meander Corner No. 2 Section 12, Township 30 North,  
 Range 22 West, County of Ramsey, State of Minnesota.

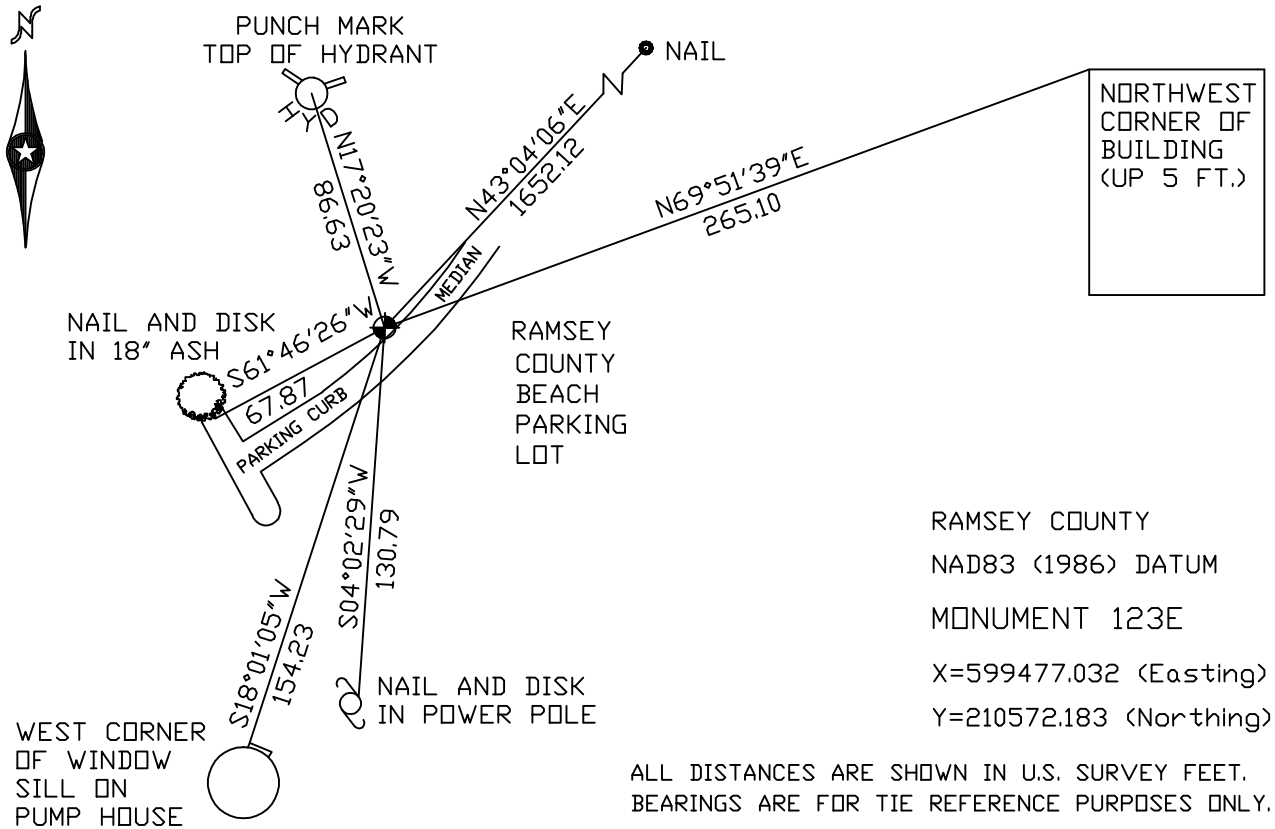
At the corner location shown on the sketch

On November 5, 2004 found a cast iron monument.

left monument as found,  lowered monument,  removed monument (explain)

On \_\_\_\_\_ placed a \_\_\_\_\_

## SKETCH OF REFERENCE TIES



Statements of evidence relative to this corner are on the following page(s).

I hereby certify that this document and the data contained herein was prepared by me or under my direct supervision this \_\_\_\_\_ day of \_\_\_\_\_, 20\_\_\_\_.

SIGNATURE

Minnesota License No. \_\_\_\_\_

- Land Surveyor       Professional Engineer  
 County Surveyor     County Engineer

OFFICE OF COUNTY SURVEYOR

County of Ramsey

I hereby certify that this document was filed in the County Surveyor's office on the \_\_\_\_ day of \_\_\_\_\_, 20\_\_\_\_.

David D. Claypool, P.L.S., County Surveyor

By \_\_\_\_\_, Deputy

## MONUMENT 123E

**Found a granite monument flush, retied, July 19, 1974.**

**Monument was destroyed by park area construction. Set a cast iron monument, September, 1983.**

**Retied monument, February 29, 1984.**

**Retied monument, September 29, 1999.**

**Retied monument, November 5, 2004.**