

MONUMENT 12SC

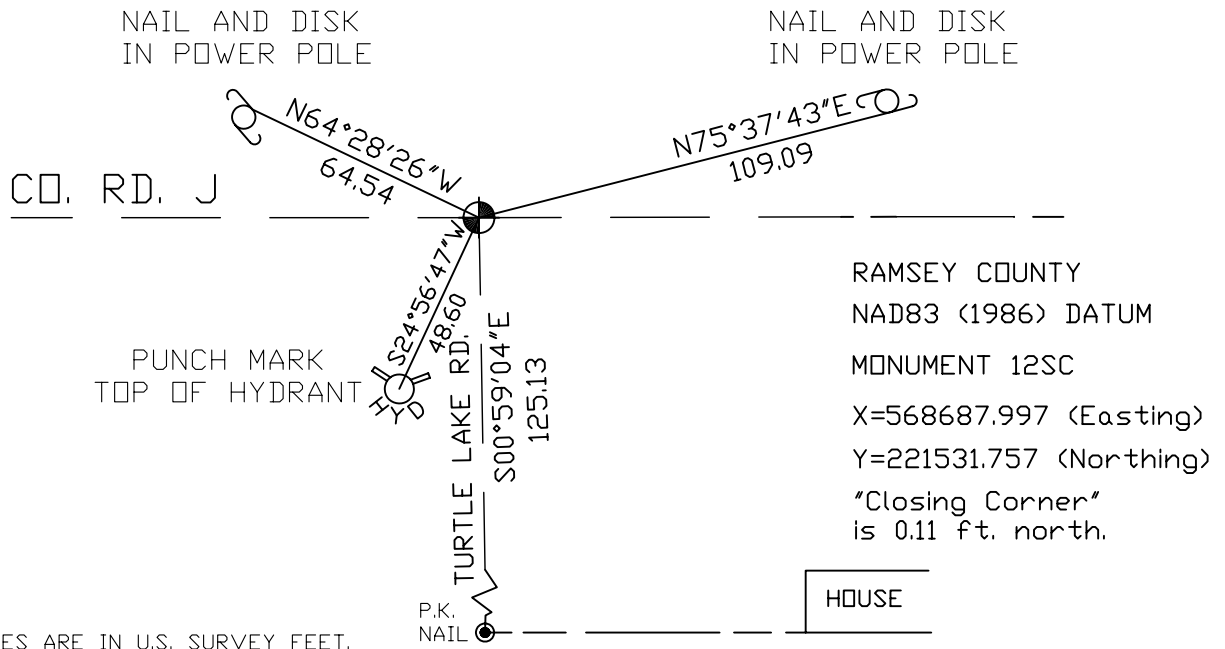
CERTIFICATE OF LOCATION OF GOVERNMENT CORNER

North Quarter Corner of Section 1, Township 30 North, Range 23 West,
County of Ramsey, State of Minnesota.

At the corner location shown on the sketch

- On June 15, 2004 found a cast iron monument marked "3RD CORRECTION LINE" (2639.10 ft. east of monument 11SC).
- left monument as found, lowered monument, removed monument (explain)
- On _____ placed a _____

SKETCH OF REFERENCE TIES



ALL DISTANCES ARE IN U.S. SURVEY FEET.
BEARINGS ARE FOR TIE REFERENCE PURPOSES ONLY.

Statements of evidence relative to this corner are on the following page(s).

I hereby certify that this document and the data contained herein was prepared by me or under my direct supervision this _____ day of _____, 20____.

SIGNATURE

- Minnesota License No. _____
- Land Surveyor Professional Engineer
- County Surveyor County Engineer

OFFICE OF COUNTY SURVEYOR

County of Ramsey

I hereby certify that this document was filed in the County Surveyor's office on the _____ day of _____, 20____.

David D. Claypool, P.L.S., County Surveyor

By _____, Deputy

MONUMENT 12SC

Found cast iron monument, down 0.1 ft.; retied, October 24, 1974.

Tied out cast iron monument for construction removal, April, 1990.

Removed cast iron monument, May 30, 1990.

Placed 20 in. cast iron monument, September 5, 1990.

Retied monument, January 27, 1993.

Cemented monument in place, October 21, 1993.

Removed 20 in. cast iron monument. Set 20 in. cast iron monument marked, "3RD CORRECTION LINE" and cemented in place, 0.11 ft. south of original cast iron monument location, July 26, 1995.

Tied monument 12SC, October 8, 1998.

Retied monument, June 15, 2004.