

MONUMENT 13SC

CERTIFICATE OF LOCATION OF GOVERNMENT CORNER

Northwest Corner of Section 6, Township 30 North, Range 22 West,
County of Ramsey, State of Minnesota.

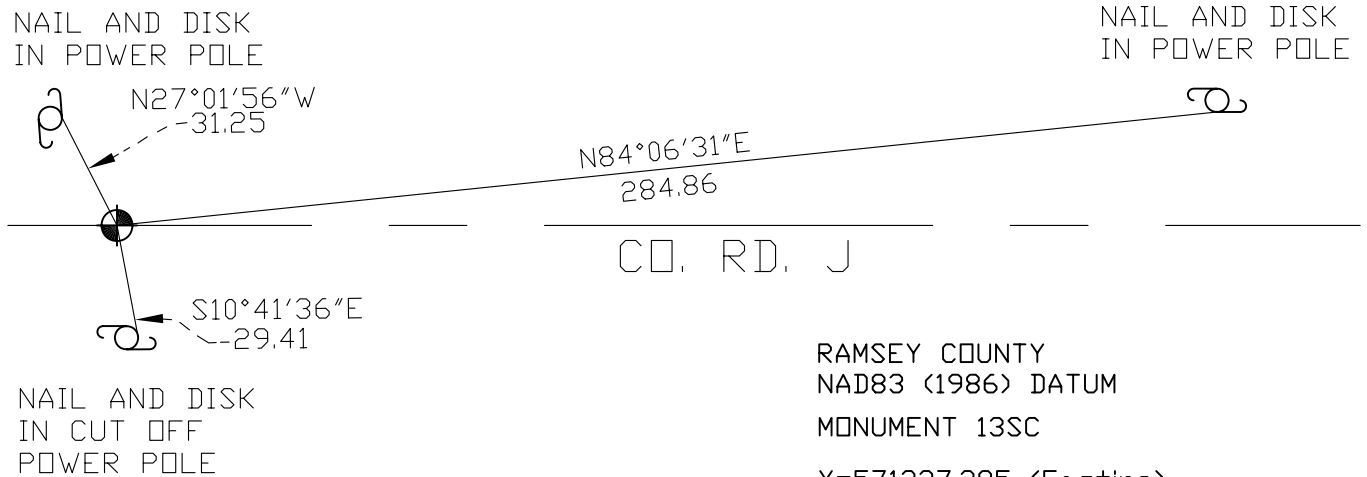
At the corner location shown on the sketch

On July 25, 2002 found a cast iron monument marked "3RD CORRECTION LINE"
within a 27 in. cast iron manhole assembly (2639.29 ft. east of monument 12SC).
 left monument as found, lowered monument, removed monument (explain)

On _____ placed a _____



SKETCH OF REFERENCE TIES



NAIL AND DISK
IN POWER POLE

NAIL AND DISK
IN POWER POLE

NAIL AND DISK
IN CUT OFF
POWER POLE

RAMSEY COUNTY
NAD83 (1986) DATUM
MONUMENT 13SC

X=571327.285 (Easting)

Y=221537.222 (Northing)

ALL DISTANCES ARE SHOWN IN U.S. SURVEY FEET.
BEARINGS ARE FOR TIE REFERENCE PURPOSES ONLY.

"Closing Corner" is 0.75 ft. north.

Statements of evidence relative to this corner are on the following page(s).

I hereby certify that this document and the
data contained herein was prepared by me or
under my direct supervision this _____ day
of _____, 20____.

SIGNATURE

Minnesota License No. _____

- Land Surveyor Professional Engineer
 County Surveyor County Engineer

OFFICE OF COUNTY SURVEYOR

County of Ramsey

I hereby certify that this document was filed in
the County Surveyor's office on the _____ day
of _____, 20____.

David D. Claypool, P.L.S., County Surveyor

By _____, Deputy

MONUMENT 13SC

Found a 3/4 in. iron in concrete. Dug down 1.2 ft. and found a 2 in. square iron with flange; down +/- 3.5 ft., August 27, 1974.

Placed a cast iron monument, over a 2 in. square iron, with cement to steady the monument at it's base, August 28, 1974.

Retied monument, October 25, 1974.

Placed a 4.5 in. cast iron monument over a 2 in. square iron, down 1.15 ft., June 28, 1985.

Tied monument for construction removal, April, 1990.

Removed a short (4 5/8 in.) cast iron monument, May 31, 1990.

Placed a short (4 5/8 in.) cast iron monument in "Set 45" concrete and rock mix, October 30, 1990.

Retied monument, January 27, 1993.

Set a 20 in. cast iron standard corner (SC) monument marked, "3RD CORRECTION LINE", 0.75 feet south of "Closing Corner" (original granite monument location), July 26, 1995.

Maintenance Department filled 1.2 ft., Summer, 1998.

Maintenance Department set a 27 in. manhole assembly over monuments (Closing Corner and Standard Corner), down 1.2 ft. in old pavement, July 25, 2002.