

# MONUMENT 143

## CERTIFICATE OF LOCATION OF GOVERNMENT CORNER Center of Section 16, Township 30 North, Range 22 West, County of Ramsey, State of Minnesota.

At the corner location shown on the sketch

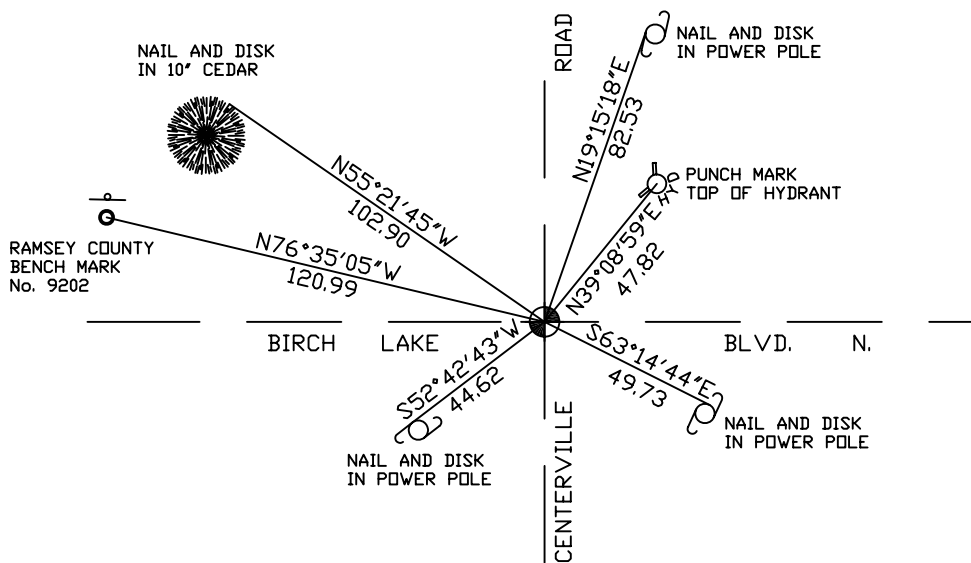
On December 16, 2004 found a cast iron monument.

left monument as found,  lowered monument,  removed monument (explain)

On \_\_\_\_\_ placed a \_\_\_\_\_



### SKETCH OF REFERENCE TIES



RAMSEY COUNTY  
NAD83 (1986) DATUM

MONUMENT 143

ALL DISTANCES ARE SHOWN IN U.S. SURVEY FEET.  
BEARINGS ARE FOR TIE REFERENCE PURPOSES ONLY.

X=584505.120 (Easting)  
Y=207870.568 (Northing)

Statements of evidence relative to this corner are on the following page(s).

I hereby certify that this document and the data contained herein was prepared by me or under my direct supervision this \_\_\_\_\_ day of \_\_\_\_\_, 20\_\_\_\_.

SIGNATURE

Minnesota License No. \_\_\_\_\_

- Land Surveyor       Professional Engineer  
 County Surveyor     County Engineer

OFFICE OF COUNTY SURVEYOR

County of Ramsey

I hereby certify that this document was filed in the County Surveyor's office on the \_\_\_\_ day of \_\_\_\_\_, 20\_\_\_\_.

David D. Claypool, P.L.S., County Surveyor

By \_\_\_\_\_, Deputy

## MONUMENT 143

Found a granite monument, down 0.3 ft., May 23, 1974.

Placed a cast iron cap monument, June 12, 1974.

Retied monument, July 2, 1974.

Monument removed for construction, May, 1989.

Relocated position and placed a railroad spike, May 15, 1990.

Found a railroad spike, placed a 20 in. cast iron monument and retied, August 7, 1990.

Retied monument, April 14, 1999.

Retied monument, December 16, 2004.