

MONUMENT 145

CERTIFICATE OF LOCATION OF GOVERNMENT CORNER

Center of Section 15, Township 30 North, Range 22 West,
County of Ramsey, State of Minnesota.

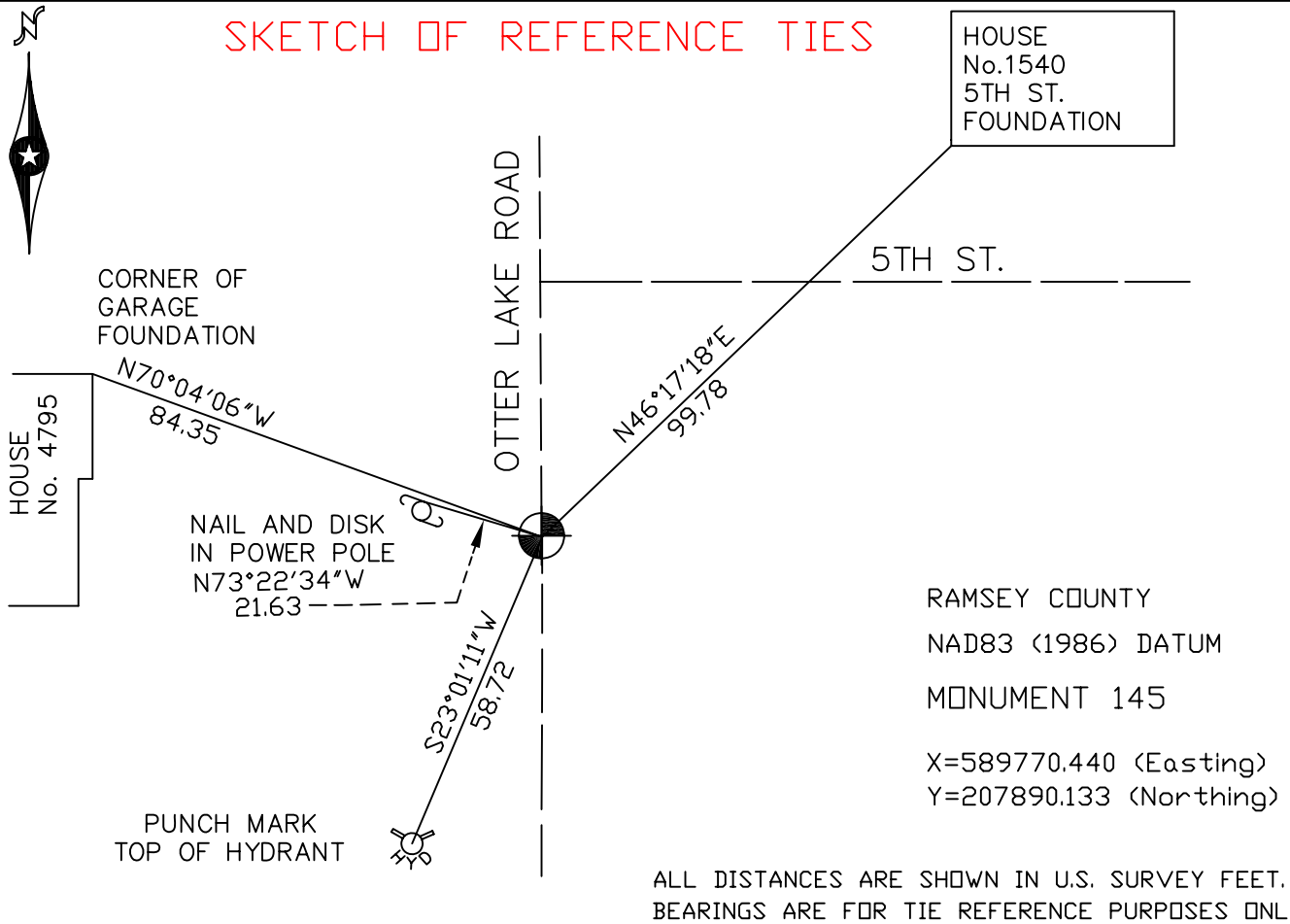
At the corner location shown on the sketch

On September 24, 2004 found a cast iron monument.

left monument as found, lowered monument, removed monument (explain)

On _____ placed a _____

SKETCH OF REFERENCE TIES



Statements of evidence relative to this corner are on the following page(s).

I hereby certify that this document and the data contained herein was prepared by me or under my direct supervision this _____ day of _____, 20____.

SIGNATURE

Minnesota License No. _____

- Land Surveyor Professional Engineer
 County Surveyor County Engineer

OFFICE OF COUNTY SURVEYOR

County of Ramsey

I hereby certify that this document was filed in the County Surveyor's office on the ____ day of _____, 20____.

David D. Claypool, P.L.S., County Surveyor

By _____, Deputy

MONUMENT 145

Found a granite monument, down 0.2 ft., May 21, 1974.

Retied monument, October 10, 1974.

Set a cast iron cap and bolt monument, May 27, 1976.

Retied monument, down 0.2 ft., September 21, 1989.

Retied monument, September 30, 1999.

Retied monument, September 24, 2004.