

MONUMENT 146

CERTIFICATE OF LOCATION OF GOVERNMENT CORNER

East Quarter of Section 15, Township 30 North, Range 22 West, County of Ramsey, State of Minnesota.

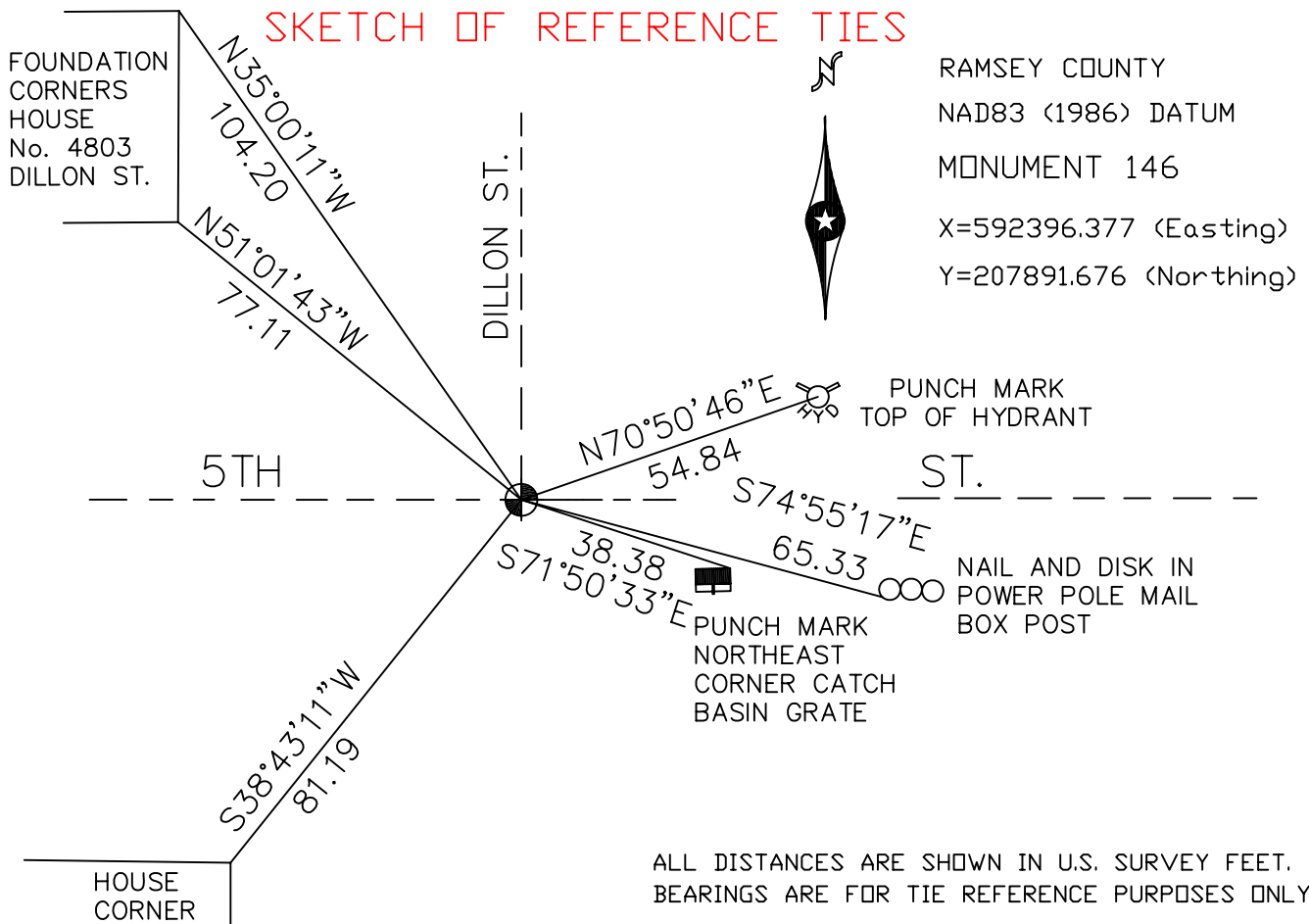
At the corner location shown on the sketch

On December 16, 2004 found a cast iron monument.

left monument as found, lowered monument, removed monument (explain)

On _____ placed a _____

SKETCH OF REFERENCE TIES



Statements of evidence relative to this corner are on the following page(s).

I hereby certify that this document and the data contained herein was prepared by me or under my direct supervision this _____ day of _____, 20____.

SIGNATURE

Minnesota License No. _____

- Land Surveyor Professional Engineer
 County Surveyor County Engineer

OFFICE OF COUNTY SURVEYOR

County of Ramsey

I hereby certify that this document was filed in the County Surveyor's office on the ____ day of _____, 20____.

David D. Claypool, P.L.S., County Surveyor

By _____, Deputy

MONUMENT 146

Found a cast iron monument; down 6 ½ in., top broken off; retied monument, October 10, 1974.

Removed broken cast iron monument and found 2½ in. outer diameter pipe down 24 in. Dug along side of pipe to a depth of 58 in. and found no granite monument, May 8, 1975.

Placed a cast iron monument, May 9, 1975.

Monument destroyed by construction, 1988; relocated position and set P.K. nails, March 23, 1989.

Placed cast iron monument, May 9, 1989.

Retied monument, July 17, 1990.

Retied monument, October 4, 1999.

Retied monument, December 16, 2004.