

MONUMENT 148

CERTIFICATE OF LOCATION OF GOVERNMENT CORNER

East Quarter Corner, Section 14, Township 30 North, Range 22 West, County of Ramsey, State of Minnesota.

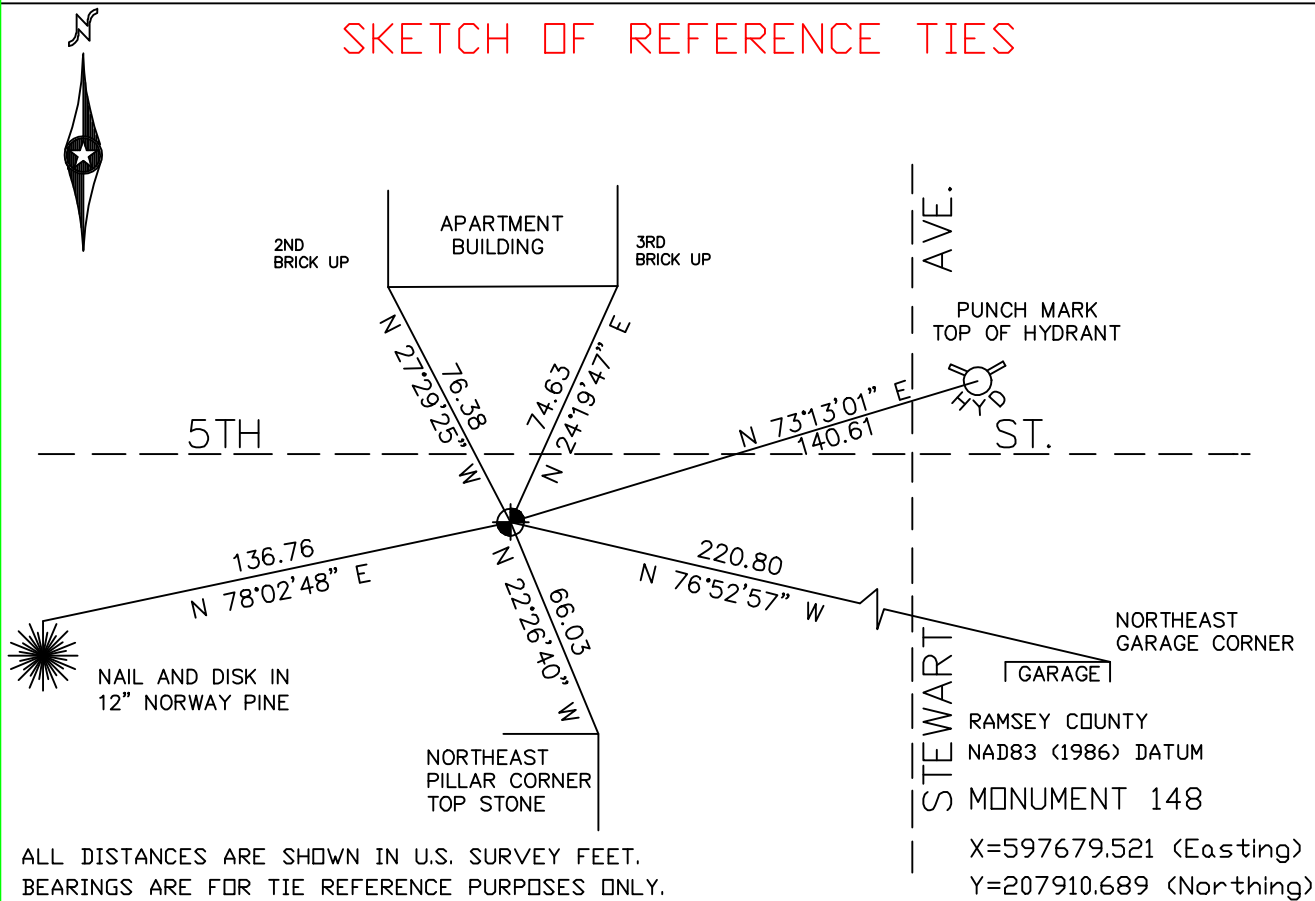
At the corner location shown on the sketch

On December 1, 2004 found a cast iron monument.

left monument as found, lowered monument, removed monument (explain)

On _____ placed a _____

SKETCH OF REFERENCE TIES



Statements of evidence relative to this corner are on the following page(s).

I hereby certify that this document and the data contained herein was prepared by me or under my direct supervision this _____ day of _____, 20____.

SIGNATURE

Minnesota License No. _____

- Land Surveyor Professional Engineer
 County Surveyor County Engineer

OFFICE OF COUNTY SURVEYOR

County of Ramsey

I hereby certify that this document was filed in the County Surveyor's office on the ____ day of _____, 20____.

David D. Claypool, P.L.S., County Surveyor

By _____, Deputy

MONUMENT 148

Found a granite monument flush, June, 1977.

Retied monument, down 0.16 ft., March 1, 1984.

Monument removed by street reconstruction; ties reestablished location and P.K. nails set, March 24, 1989.

Replaced with a cast iron monument, May 5, 1989.

Retied monument, flush, January 24, 1992.

Retied monument, September 23, 1999.

Retied monument, December 1, 2004.