

MONUMENT 14SC

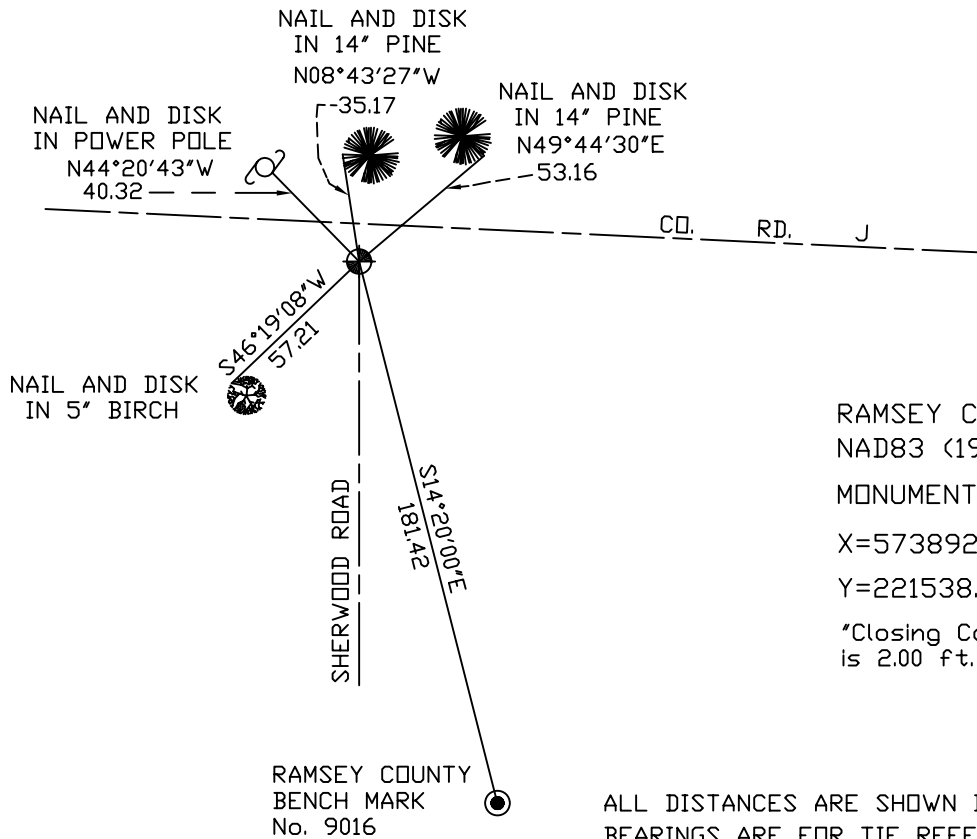
CERTIFICATE OF LOCATION OF GOVERNMENT CORNER

North Quarter Corner of Section 6, Township 30 North, Range 22 West,
County of Ramsey, State of Minnesota.

At the corner location shown on the sketch

- On June, 2004 found a cast iron monument marked "3RD CORRECTION LINE" (2564.74 ft. east of monument 13SC).
- left monument as found, lowered monument, removed monument (explain)
- On _____ placed a _____

SKETCH OF REFERENCE TIES



RAMSEY COUNTY
NAD83 (1986) DATUM
MONUMENT 14SC
X=573892.025 (Easting)
Y=221538.767 (Northing)
"Closing Corner"
is 2.00 ft. north.

ALL DISTANCES ARE SHOWN IN U.S. SURVEY FEET.
BEARINGS ARE FOR TIE REFERENCE PURPOSES ONLY.

Statements of evidence relative to this corner are on the following page(s).

I hereby certify that this document and the data contained herein was prepared by me or under my direct supervision this _____ day of _____, 20____.

SIGNATURE

- Minnesota License No. _____
- Land Surveyor Professional Engineer
- County Surveyor County Engineer

OFFICE OF COUNTY SURVEYOR

County of Ramsey

I hereby certify that this document was filed in the County Surveyor's office on the _____ day of _____, 20____.

David D. Claypool, P.L.S., County Surveyor

By _____, Deputy

MONUMENT 14SC

Found $\frac{1}{2}$ in. iron pipe. Dug down 4.0 ft., found nothing.
Placed cast iron monument, 1975.

Retied monument, January 23, 1976.

Tied out monument and removed cast iron for construction, April, 1990.

Placed a 20 in. cast iron monument, September 5, 1990.

Retied monument, January 27, 1993.

Placed a 20 in. cast iron monument marked, "3RD CORRECTION LINE",
2.0 ft. south of original cast iron monument location, July 27, 1995.

Tied monument 14SC, September 24, 1998.

Retied monument, June, 2004.