

MONUMENT 166

CERTIFICATE OF LOCATION OF GOVERNMENT CORNER South Quarter Corner of Section 17, Township 30 North, Range 22 West, County of Ramsey, State of Minnesota.

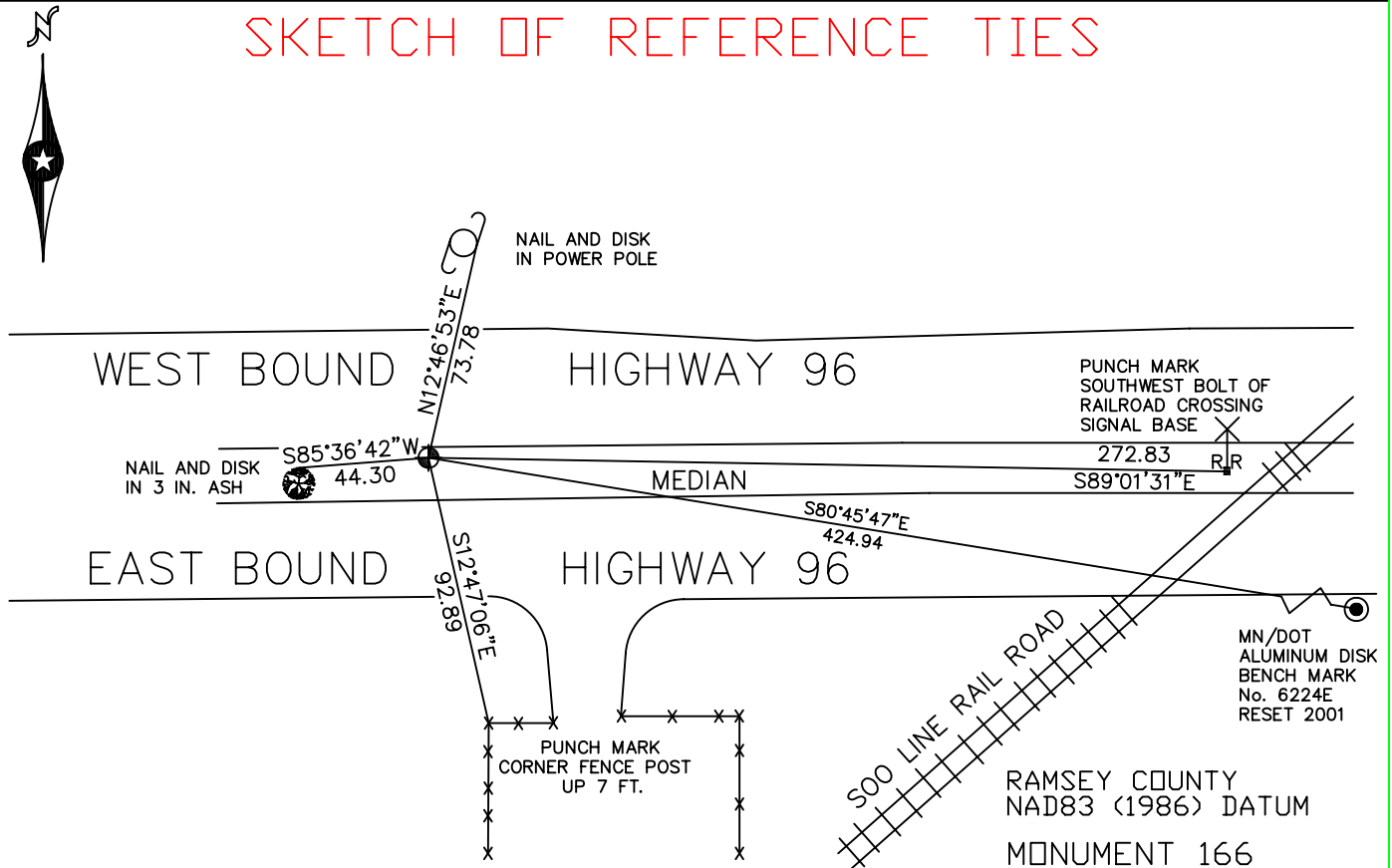
At the corner location shown on the sketch

On December 14, 2004 found a cast iron monument.

left monument as found, lowered monument, removed monument (explain)

On _____ placed a _____

SKETCH OF REFERENCE TIES



ALL DISTANCES ARE SHOWN IN U.S. SURVEY FEET.
BEARINGS ARE FOR TIE REFERENCE PURPOSES ONLY.

X=579242.739 (Easting)
Y=205220.701 (Northing)

Statements of evidence relative to this corner are on the following page(s).

I hereby certify that this document and the data contained herein was prepared by me or under my direct supervision this _____ day of _____, 20____.

SIGNATURE

Minnesota License No. _____

- Land Surveyor Professional Engineer
 County Surveyor County Engineer

OFFICE OF COUNTY SURVEYOR

County of Ramsey

I hereby certify that this document was filed in the County Surveyor's office on the ____ day of _____, 20____.

David D. Claypool, P.L.S., County Surveyor

By _____, Deputy

MONUMENT 166

Found granite monument down +/-5 in.; set cast iron cap and bolt monument in concrete, 1979.

Tied out cast iron monument in concrete, May 7, 1990.

Set 20 in. cast iron monument in median, 4.6 ft. south of north curb line; set sign and post 0.8 ft. south of monument, September 22, 1998.

Retied monument, December 4, 1998.

Retied monument, December 14, 2004.