

MONUMENT 16SC

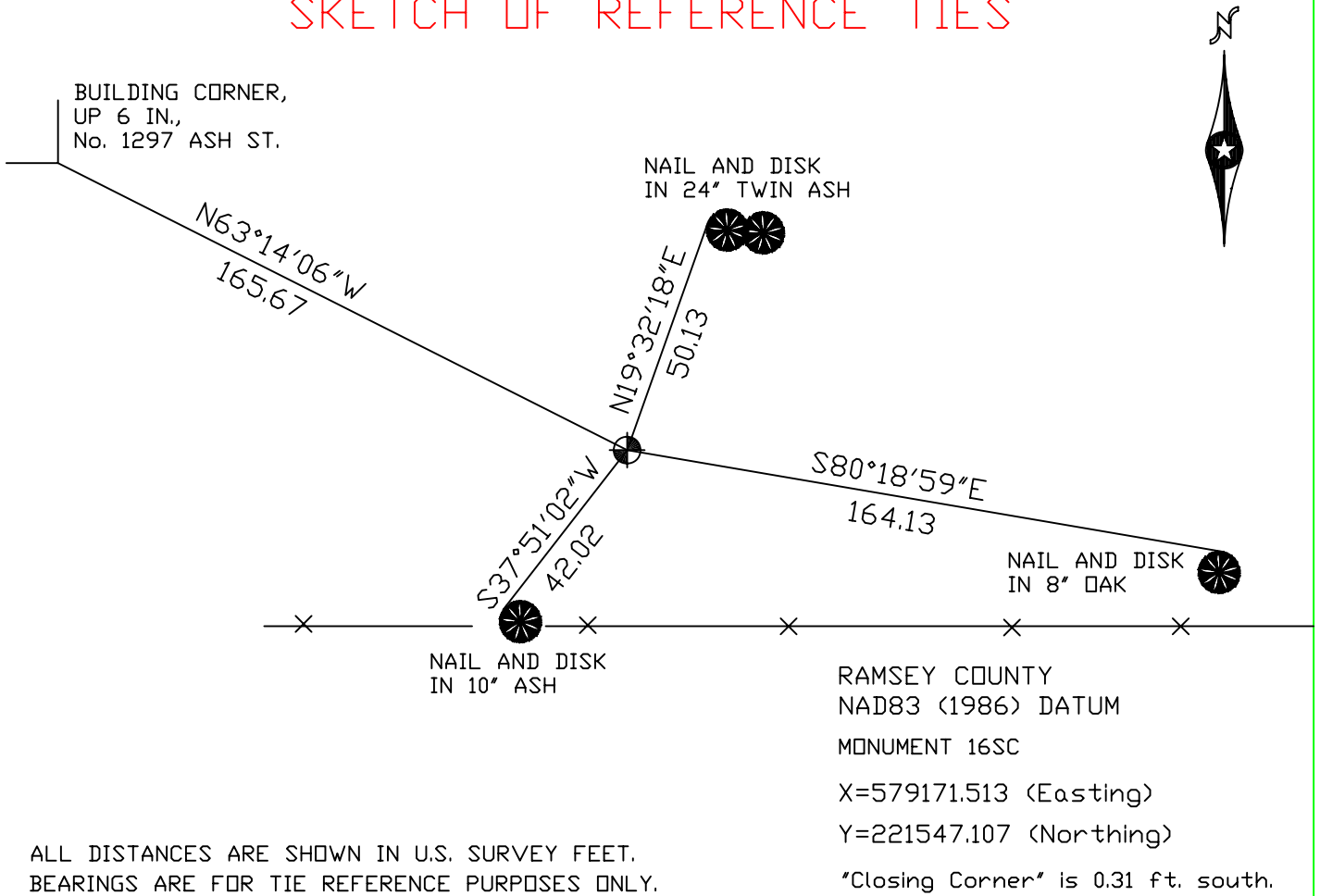
CERTIFICATE OF LOCATION OF GOVERNMENT CORNER

North Quarter Corner of Section 5, Township 30 North, Range 22 West,
County of Ramsey, State of Minnesota.

At the corner location shown on the sketch

- On June 25, 2004 found a cast iron monument marked "3RD CORRECTION LINE", (2641.46 ft. east of monument 15SC).
- left monument as found, lowered monument, removed monument (explain)
- On _____ placed a _____

SKETCH OF REFERENCE TIES



ALL DISTANCES ARE SHOWN IN U.S. SURVEY FEET.
BEARINGS ARE FOR TIE REFERENCE PURPOSES ONLY.

Statements of evidence relative to this corner are on the following page(s).

I hereby certify that this document and the data contained herein was prepared by me or under my direct supervision this ____ day of _____, 20____.

SIGNATURE

Minnesota License No. _____

- Land Surveyor Professional Engineer
 County Surveyor County Engineer

OFFICE OF COUNTY SURVEYOR

County of Ramsey

I hereby certify that this document was filed in the County Surveyor's office on the ____ day of _____, 20____.

David D. Claypool, P.L.S., County Surveyor

By _____, Deputy

MONUMENT 16SC

Found a railroad spike, over a granite monument, down 0.7 ft.. Drilled a larger hole in the top of the granite monument and cemented a cast iron cap and bolt on top, May 16, 1974.

Retied monument, July 3, 1974.

Found cap missing; monument down 0.3 ft., July 13, 1987.

Replaced the cast iron cap.

Tied out monument, for construction removal, April, 1990.

Removed cast iron cap, May 7, 1990.

Found broken granite monument, down +/-18 in., September 5, 1990.

Placed a short cast iron ($4\frac{5}{8}$ in.) in "Set 45" concrete, October 30, 1990.

Placed a sign and post, 26 ft. south of monument, October 16, 1991.

Retied monument, January 27, 1993.

Placed an 8 in. cast iron monument marked, "3RD CORRECTION LINE" in concrete, 0.31 ft. north of original granite monument location, July 26, 1995.

Tied monument 16SC, October 8, 1998.

Retied monument, June 25, 2004.