

MONUMENT 170

CERTIFICATE OF LOCATION OF GOVERNMENT CORNER

North Quarter Corner of Section 22, Township 30 North,
Range 22 West, County of Ramsey, State of Minnesota.

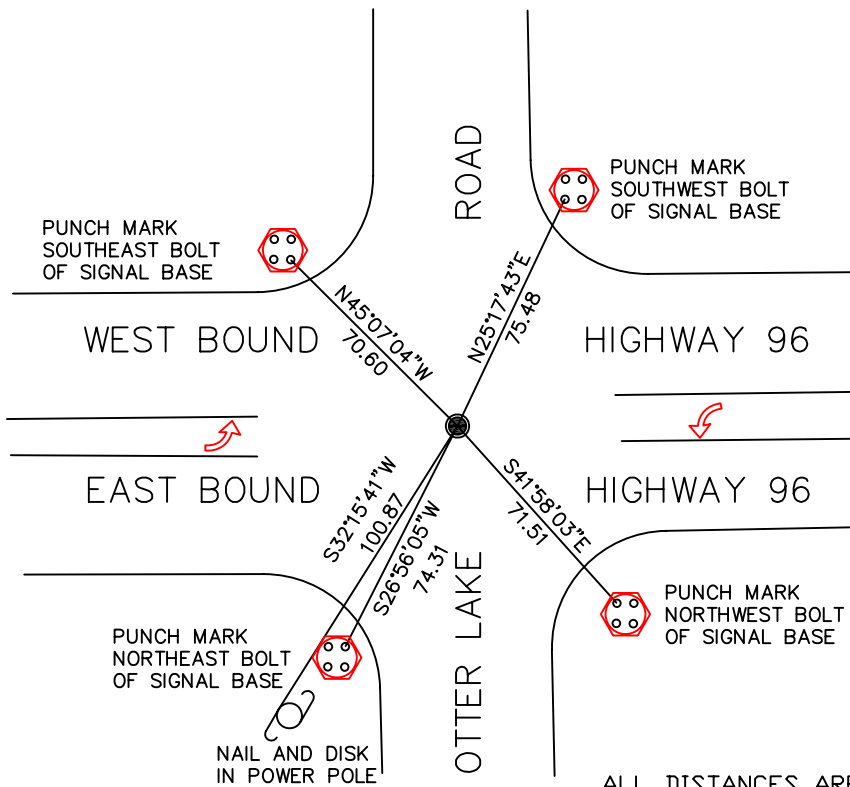
At the corner location shown on the sketch

On December 16, 2004 found 2.5 in. brass disk.

left monument as found, lowered monument, removed monument (explain)

On _____ placed a _____

SKETCH OF REFERENCE TIES



RAMSEY COUNTY
NAD83 (1986) DATUM

MONUMENT 170

X=589792.517 (Easting)
Y=205239.902 (Northing)

ALL DISTANCES ARE SHOWN IN U.S. SURVEY FEET.
BEARINGS ARE FOR TIE REFERENCE PURPOSES ONLY.

Statements of evidence relative to this corner are on the following page(s).

I hereby certify that this document and the data contained herein was prepared by me or under my direct supervision this _____ day of _____, 20____.

SIGNATURE

Minnesota License No. _____

- Land Surveyor Professional Engineer
 County Surveyor County Engineer

OFFICE OF COUNTY SURVEYOR

County of Ramsey

I hereby certify that this document was filed in the County Surveyor's office on the ____ day of _____, 20____.

David D. Claypool, P.L.S., County Surveyor

By _____, Deputy

MONUMENT 170

Found 0.5 in. diameter, +/-6 in. long pipe, down 3.5 in.

Found granite monument down 11 in., May 8, 1975.

Set cast iron monument, +/- 1979.

Tied monument, down +/-0.1 ft., June 14, 1990.

Removed for re-construction.

Set 2.5 in. brass disk, July 25, 1996.

Found disk to be incorrect; removed and set new disk, October 28, 1996.

Retied monument, September 24, 1999.

Retied monument, December 16, 2004.