

# MONUMENT 171

## CERTIFICATE OF LOCATION OF GOVERNMENT CORNER

Southwest Corner of Section 14, Township 30 North,  
Range 22 West, County of Ramsey, State of Minnesota.

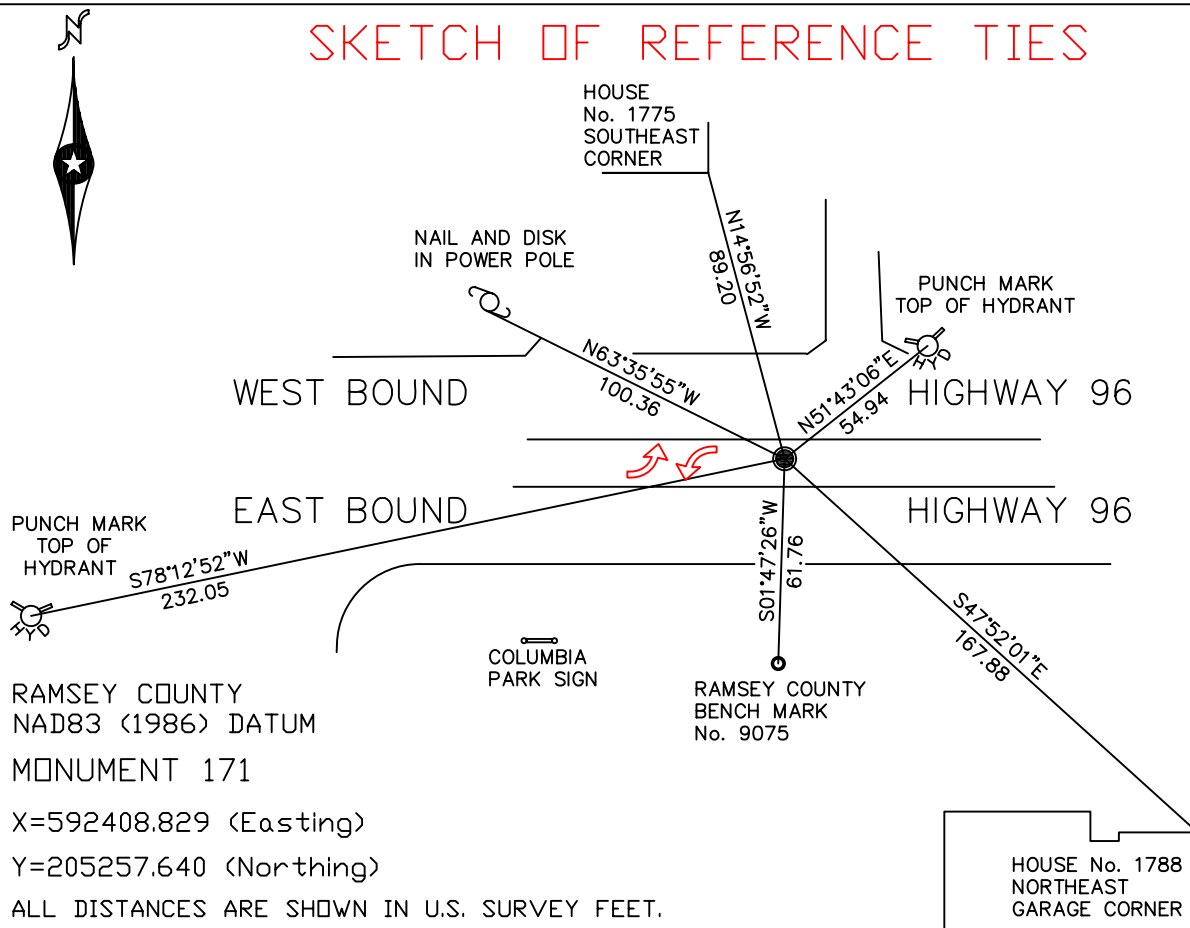
At the corner location shown on the sketch

On December 14, 2004 found a 2.5 in. brass disk.

left monument as found,  lowered monument,  removed monument (explain)

On \_\_\_\_\_ placed a \_\_\_\_\_

### SKETCH OF REFERENCE TIES



RAMSEY COUNTY  
NAD83 (1986) DATUM  
MONUMENT 171

X=592408.829 (Easting)  
Y=205257.640 (Northing)

ALL DISTANCES ARE SHOWN IN U.S. SURVEY FEET.  
BEARINGS ARE FOR TIE REFERENCE PURPOSES ONLY.

Statements of evidence relative to this corner are on the following page(s).

I hereby certify that this document and the data contained herein was prepared by me or under my direct supervision this \_\_\_\_\_ day of \_\_\_\_\_, 20\_\_\_\_.

\_\_\_\_\_  
SIGNATURE

Minnesota License No. \_\_\_\_\_

Land Surveyor     Professional Engineer  
 County Surveyor     County Engineer

OFFICE OF COUNTY SURVEYOR  
County of Ramsey

I hereby certify that this document was filed in the County Surveyor's office on the \_\_\_\_ day of \_\_\_\_\_, 20\_\_\_\_.

David D. Claypool, P.L.S., County Surveyor

By \_\_\_\_\_, Deputy

# MONUMENT 171

Found cast iron monument, May, 1975.

Removed monument for reconstruction, April 9, 1996.

Reset location, placed 2.5 in. brass disk, July 30, 1996.

Retied monument, September 24, 1999.

Retied monument, December 14, 2004.