

# MONUMENT 172

## CERTIFICATE OF LOCATION OF GOVERNMENT CORNER

South Quarter Corner of Section 14, Township 30 North,  
Range 22 West, County of Ramsey, State of Minnesota.

At the corner location shown on the sketch

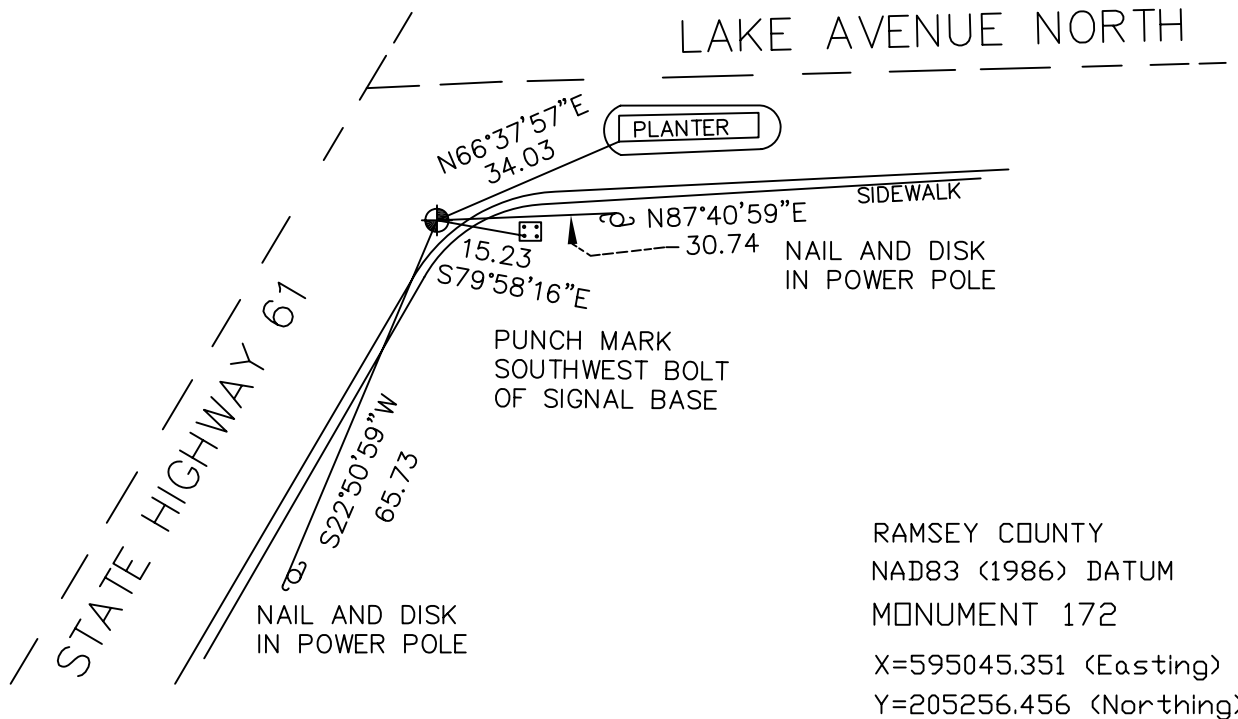
On December 14, 2004 found a cast iron monument.

left monument as found,  lowered monument,  removed monument (explain)

On \_\_\_\_\_ placed a \_\_\_\_\_



### SKETCH OF REFERENCE TIES



ALL DISTANCES ARE SHOWN IN U.S. SURVEY FEET.  
BEARINGS ARE FOR TIE REFERENCE PURPOSES ONLY.

Statements of evidence relative to this corner are on the following page(s).

I hereby certify that this document and the data contained herein was prepared by me or under my direct supervision this \_\_\_\_\_ day of \_\_\_\_\_, 20\_\_\_\_.

SIGNATURE

Minnesota License No. \_\_\_\_\_

- Land Surveyor       Professional Engineer  
 County Surveyor     County Engineer

OFFICE OF COUNTY SURVEYOR

County of Ramsey

I hereby certify that this document was filed in the County Surveyor's office on the \_\_\_\_ day of \_\_\_\_\_, 20\_\_\_\_.

David D. Claypool, P.L.S., County Surveyor

By \_\_\_\_\_, Deputy

## MONUMENT 172

Found nothing; placed cast iron monument as per Survey Book No.1, pages 56 and 57. Obtained ties from State Highway Department, which checked, June 24, 1975.

Tied monument, June 15, 1990.

Retied monument, September 28, 1999.

Retied monument, December 14, 2004.