

# MONUMENT 18E

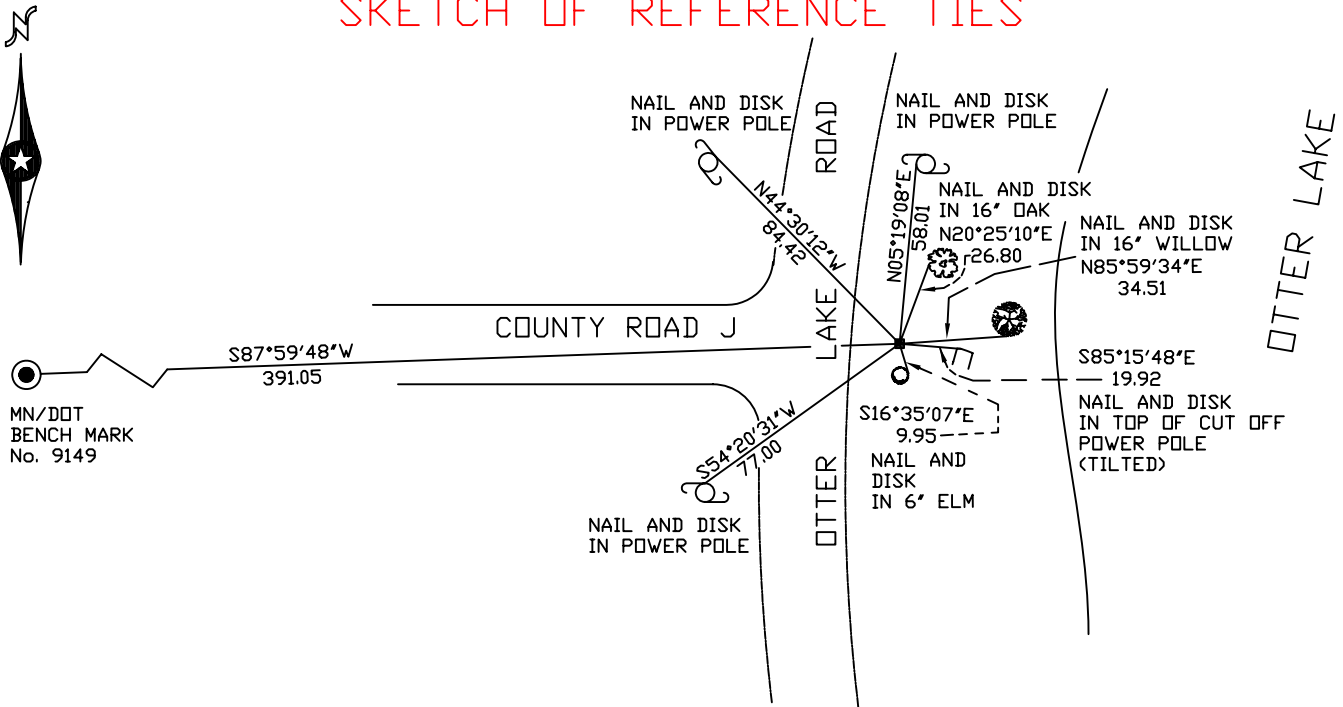
## CERTIFICATE OF LOCATION OF GOVERNMENT CORNER

Meander Corner No. 19, Section 4, Township 30 North, Range 22 West,  
County of Ramsey, State of Minnesota.

At the corner location shown on the sketch

- On December 16, 2004 found a granite monument, down +/-3 ft.,  
(2216.48 east of monument 18SC).
- left monument as found,  lowered monument,  removed monument (explain)
- On \_\_\_\_\_ placed a \_\_\_\_\_

### SKETCH OF REFERENCE TIES



ALL DISTANCES ARE SHOWN IN U.S. SURVEY FEET.  
BEARINGS ARE FOR TIE REFERENCE PURPOSES ONLY.

RAMSEY COUNTY  
NAD83 (1986) DATUM  
MONUMENT 18E

X=586605.260 (Easting)  
Y=221541.775 (Northing)

MONUMENT IS ON 3RD CORRECTION LINE.

Statements of evidence relative to this corner are on the following page(s).

I hereby certify that this document and the data contained herein was prepared by me or under my direct supervision this \_\_\_\_\_ day of \_\_\_\_\_, 20\_\_\_\_.

SIGNATURE

Minnesota License No. \_\_\_\_\_

- Land Surveyor     Professional Engineer  
 County Surveyor     County Engineer

OFFICE OF COUNTY SURVEYOR

County of Ramsey

I hereby certify that this document was filed in the County Surveyor's office on this \_\_\_\_\_ day of \_\_\_\_\_, 20\_\_\_\_.

David D. Claypool, P.L.S., County Surveyor

By \_\_\_\_\_, Deputy

# MONUMENT 18E

Found granite monument, down 0.2 ft., May 15, 1974.

Retied monument, July 3, 1974.

Ties gone or tilted. Monument down +/-3 feet, June 15, 1998.

Retied monument, December 16, 2004.