

# MONUMENT 18SC

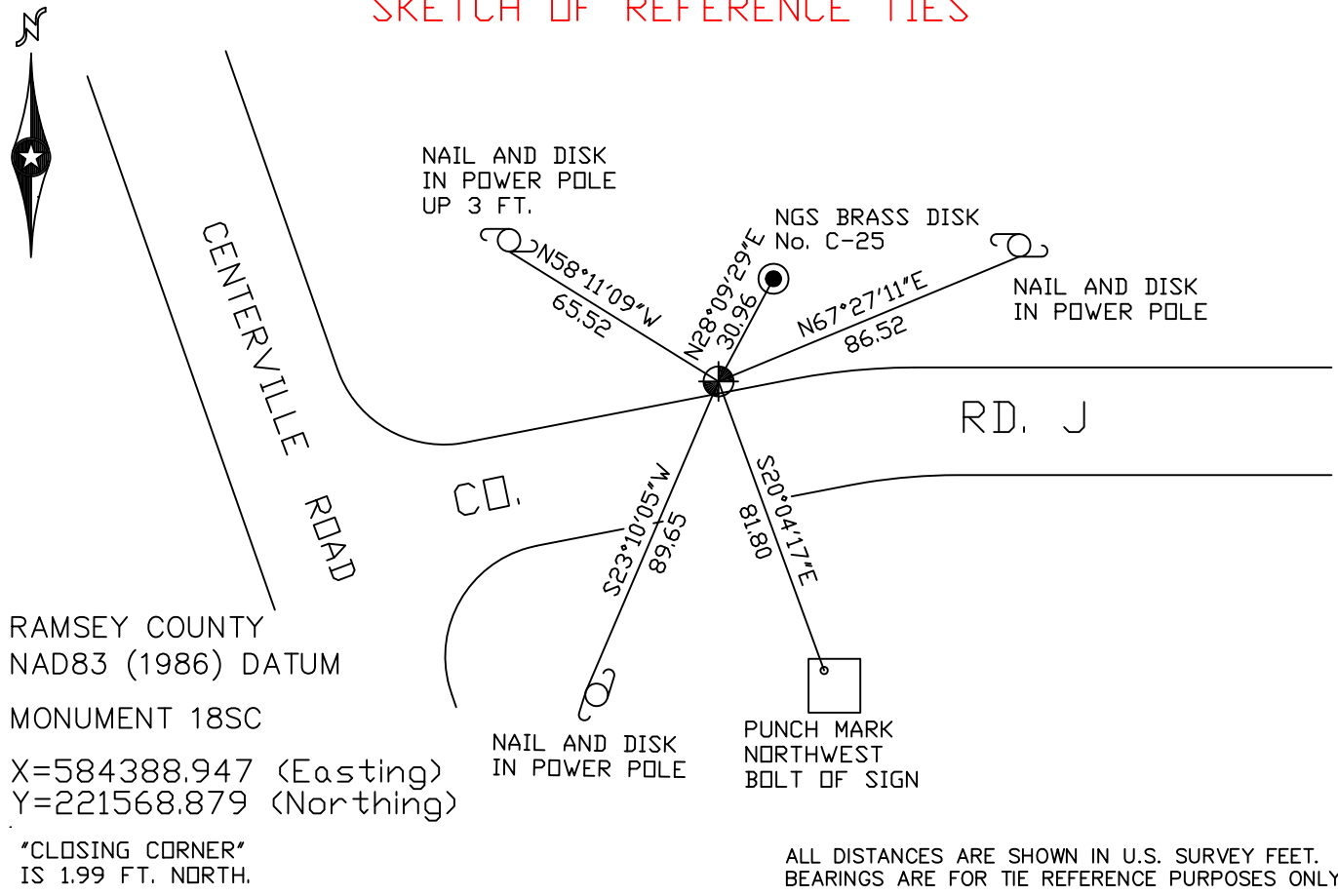
## CERTIFICATE OF LOCATION OF GOVERNMENT CORNER

The North Quarter Corner of Section 4, Township 30 North, Range 22 West,  
County of Ramsey, State of Minnesota.

At the corner location shown on the sketch

- On June 16, 2004 found a cast iron monument marked "3RD CORRECTION LINE", within a cast iron manhole assembly, (2216.48 west of monument 18E).  
 left monument as found ,  lowered monument,  removed monument (explain)
- On \_\_\_\_\_ placed a \_\_\_\_\_

### SKETCH OF REFERENCE TIES



Statements of evidence relative to this corner are on the following page(s).

I hereby certify that this document and the data contained herein was prepared by me or under my direct supervision this \_\_\_\_\_ day of \_\_\_\_\_, 20\_\_\_\_.

\_\_\_\_\_  
SIGNATURE

Minnesota License No. \_\_\_\_\_

Land Surveyor     Professional Engineer  
 County Surveyor     County Engineer

OFFICE OF COUNTY SURVEYOR

County of Ramsey

I hereby certify that this document was filed in the County Surveyor's office on the \_\_\_\_\_ day of \_\_\_\_\_, 20\_\_\_\_.

David D. Claypool, P.L.S., County Surveyor

By \_\_\_\_\_, Deputy

# MONUMENT 18SC

Found granite monument, down 0.2 ft., April 15, 1974.

Retied monument, July 3, 1974.

Set a cast iron cap over granite monument.

Cast iron cap missing, November 2, 1988.

Granite monument ground down by Construction Dept., October 10, 1991.

Drilled a hole in granite monument; down 0.3 ft., November 22, 1992.

Set a 20 in. cast iron monument marked, "3RD CORRECTION LINE", 1.99 ft. south of original granite monument location, July 26, 1995.

Found granite monument; 20 in. cast iron monument (18SC) gone, June 17, 1998.

Set a 20 in. cast iron monument (18SC), within a cast iron manhole assembly, down +/-18 in., August, 1999.

Retied monument 18SC, November 15, 1999.

Drilled a hole in the granite monument (down +/-0.4 ft.) and in the cast iron monument, October 14, 2003.

Retied monument, June 16, 2004.