

MONUMENT 22E

CERTIFICATE OF LOCATION OF GOVERNMENT CORNER

Witness to Meander Corner No. 7, Section 2, Township 30 North, Range 22 West,
County of Ramsey, State of Minnesota.

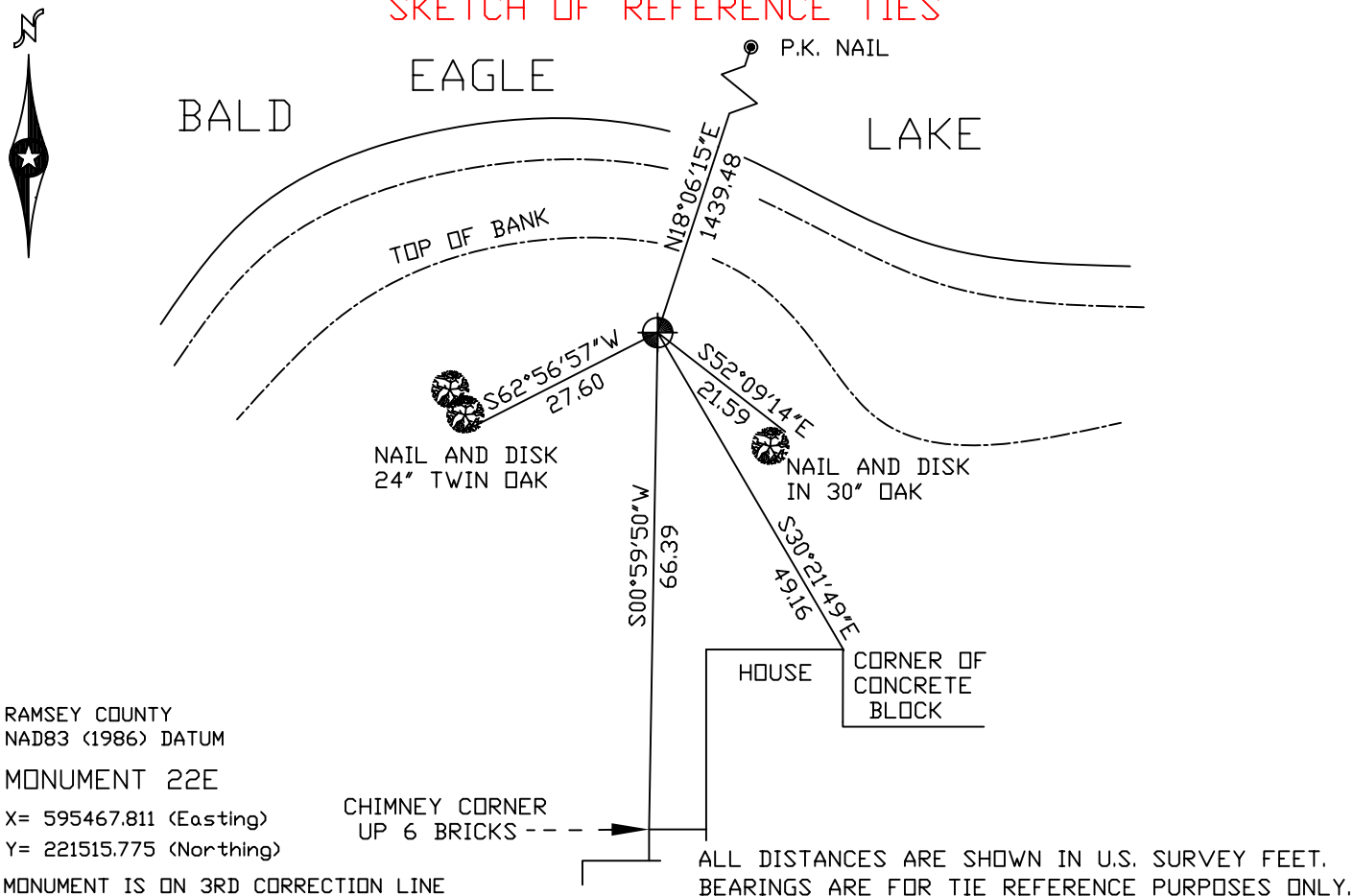
At the corner location shown on the sketch

On November 30, 2004 found a cast iron monument (3066.35 ft. east of
monument 21SC).

left monument as found, lowered monument, removed monument (explain)

On _____ placed a _____

SKETCH OF REFERENCE TIES



Statements of evidence relative to this corner are on the following page(s).

I hereby certify that this document and the data contained herein was prepared by me or under my direct supervision this _____ day of _____, 20____.

SIGNATURE

Minnesota License No. _____

- Land Surveyor Professional Engineer
 County Surveyor County Engineer

OFFICE OF COUNTY SURVEYOR

County of Ramsey

I hereby certify that this document was filed in the County Surveyor's office on the _____ day of _____, 20____.

David D. Claypool, P.L.S., County Surveyor

By _____, Deputy

MONUMENT 22E

Original granite monument set at M.C. No. 7 location, June, 1901.

Granite monument moved back to the east 12.35 ft., January, 1910.

Moved 50 ft. farther to the east of W.C. for a total of 62.35 ft.,
January, 1946.

Found 1 in. by 3 ft. solid iron, down 0.3 ft., placed by Frank Kvidera.
Replaced with a 20 in. cast iron monument, flush with surface, at the top
of hill and tied out, May 6, 1974.

Retied monument 22E, July 21, 1988.

Retied monument, September 22, 1998.

Retied monument, November 30, 2004.