

# MONUMENT 23SC

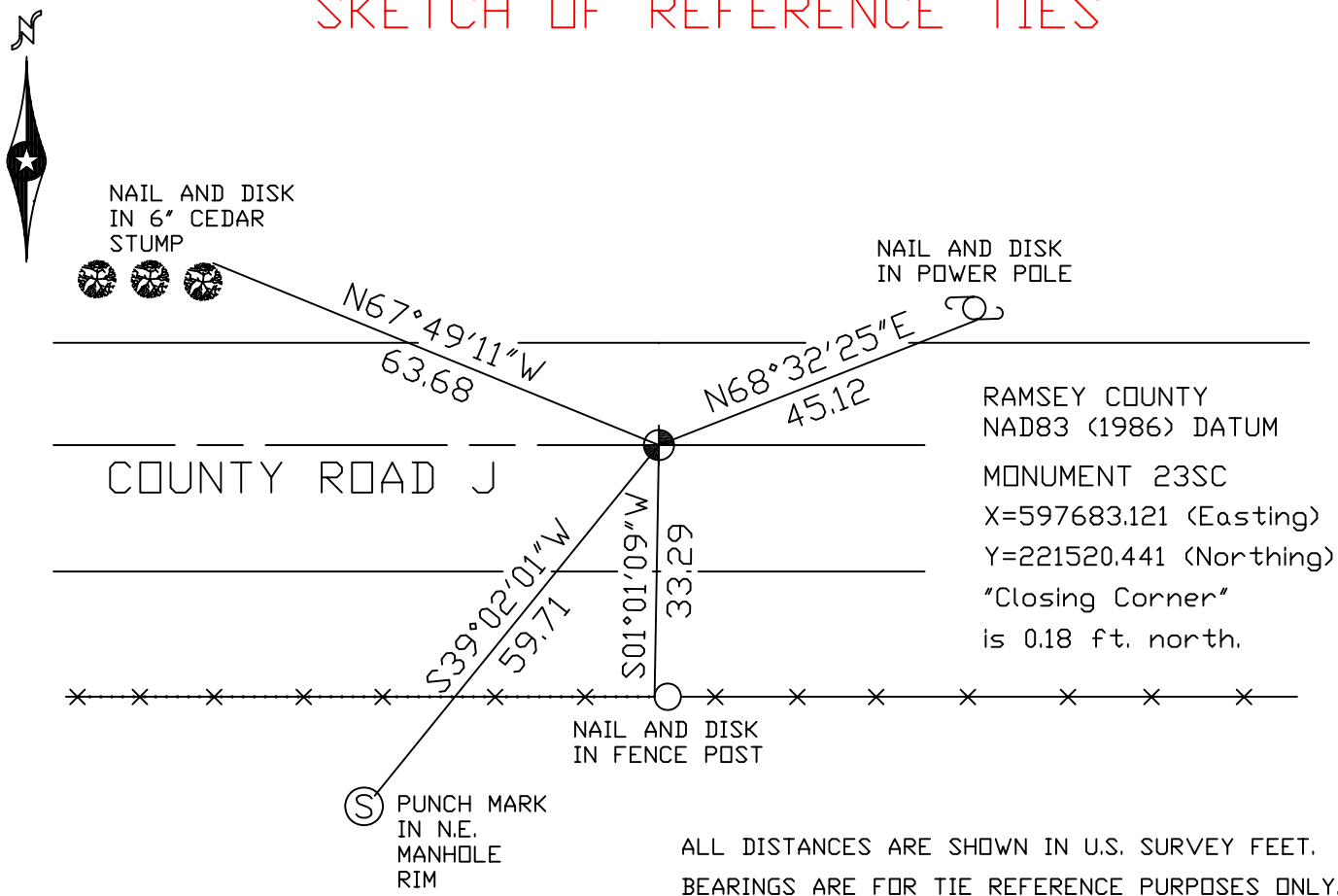
## CERTIFICATE OF LOCATION OF GOVERNMENT CORNER

Northeast Corner of Section 2, Township 30 North, Range 22 West, County of Ramsey, State of Minnesota.

At the corner location shown on the sketch

- On June 10, 2004 found a cast iron monument, marked "3RD CORRECTION LINE", in a cast iron manhole assembly, (2215.32 ft. east of monument 22E).
- left monument as found,  lowered monument,  removed monument (explain)
- On \_\_\_\_\_ placed a \_\_\_\_\_

### SKETCH OF REFERENCE TIES



Statements of evidence relative to this corner are on the following page(s).

I hereby certify that this document and the data contained herein was prepared by me or under my direct supervision this \_\_\_\_\_ day of \_\_\_\_\_, 20\_\_\_\_.

SIGNATURE

Minnesota License No. \_\_\_\_\_

- Land Surveyor     Professional Engineer  
 County Surveyor     County Engineer

OFFICE OF COUNTY SURVEYOR

County of Ramsey

I hereby certify that this document was filed in the County Surveyor's office on the \_\_\_\_\_ day of \_\_\_\_\_, 20\_\_\_\_.

David D. Claypool, P.L.S., County Surveyor

By \_\_\_\_\_, Deputy

## MONUMENT 23SC

Found granite monument, down 0.3 ft. Placed a cast iron cap and bolt on top of granite and retied, June 19, 1974.

Retied cast iron cap monument, flush, December 28, 1992.

Set P.K. nails for "3RD CORRECTION LINE" monument location and removed granite and cast iron cap, October, 1995.

Set a 20 in. cast iron standard corner (SC) monument marked, "3RD CORRECTION LINE", 0.18 ft. south of original granite monument location, 1996.

Removed monument for Maintenance Department, June 13, 1997.

Placed a 20 in. cast iron monument, down +/-15 in. marked, "3RD CORRECTION LINE", within a cast iron manhole assembly, October 27, 1997.

Tied monument 23SC, June 17, 1998.

Retied monument, June 10, 2004.