

MONUMENT 24SC

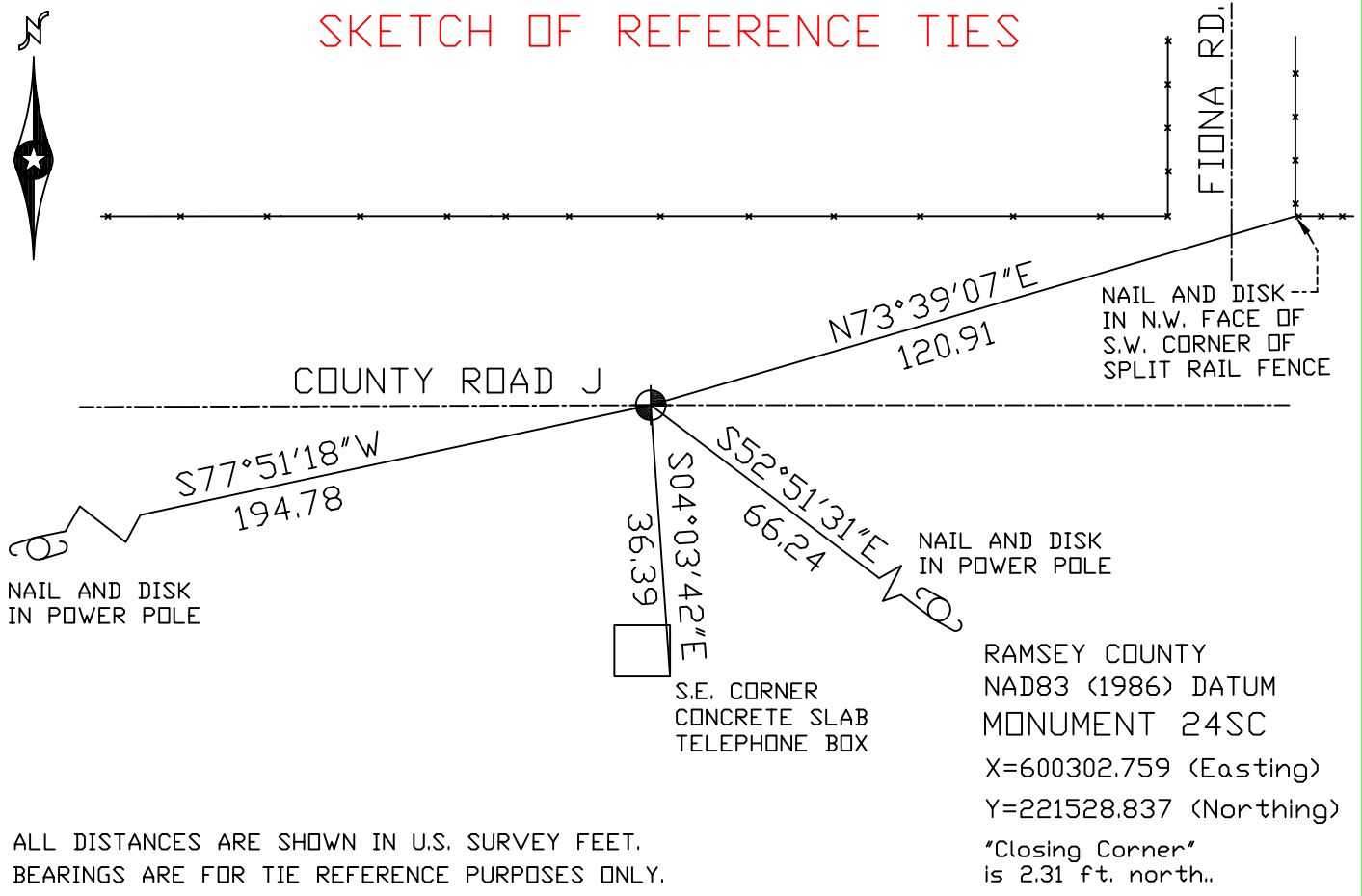
CERTIFICATE OF LOCATION OF GOVERNMENT CORNER

North Quarter Corner of Section 1, Township 30 North, Range 22 West, County of Ramsey, State of Minnesota.

At the corner location shown on the sketch

- On June 11, 2004 found a cast iron monument marked "3RD CORRECTION LINE", (2619.65 ft. east of monument 23SC).
- left monument as found, lowered monument, removed monument (explain)
- On _____ placed a _____

SKETCH OF REFERENCE TIES



Statements of evidence relative to this corner are on the following page(s).

I hereby certify that this document and the data contained herein was prepared by me or under my direct supervision this _____ day of _____, 20____.

SIGNATURE

Minnesota License No. _____

Land Surveyor Professional Engineer
 County Surveyor County Engineer

OFFICE OF COUNTY SURVEYOR

County of Ramsey

I hereby certify that this document was filed in the County Surveyor's office on the _____ day of _____, 20____.

David D. Claypool, P.L.S., County Surveyor

By _____, Deputy

MONUMENT 24SC

Found granite monument, down 0.3 ft. Placed a cast iron cap and bolt on top. Tied out, May, 1974.

Found granite monument, flush; retied, December 28, 1992.

Granite monument removed by reconstruction of road in 1993. Granite monument determined to be not on line. Standard corner (SC) position computed and marked. Tied out computed standard corner monument location and set P.K. nails, July 27, 1994.

Set a 20 in. cast iron monument at computed standard corner position. Set P.K. nails for old position and left in place, October, 1994.

Removed a 20 in. cast iron monument and set a 20 in. cast iron monument marked, "3RD CORRECTION LINE", 2.31 ft. south of original granite monument location, October, 1995.

Short ties checked, June 12, 1998.

Found P.K. nail at original granite monument location and set a 1 in. iron pipe, September 22, 1998.

Retied monument 24SC, June 11, 2004.