

MONUMENT 27

CERTIFICATE OF LOCATION OF GOVERNMENT CORNER

Center of Section 6, Township 30 North, Range 23 West, County of Ramsey,
State of Minnesota.

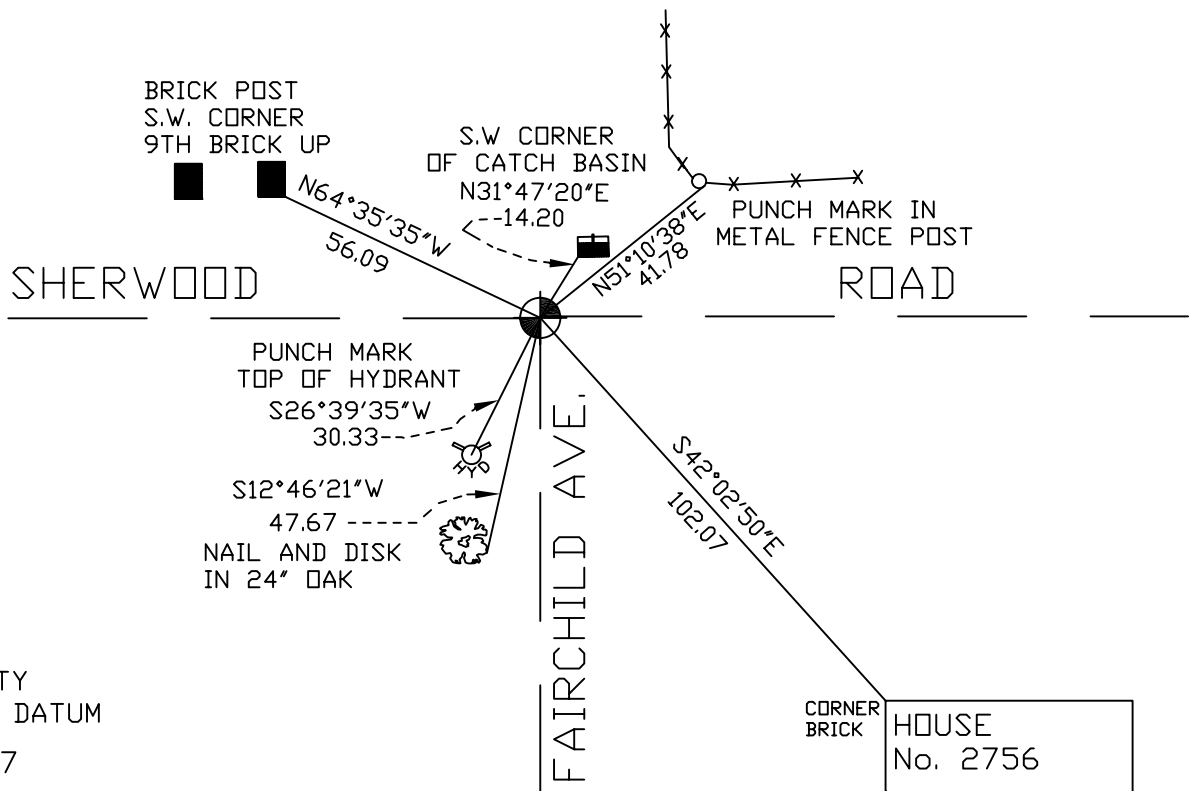
At the corner location shown on the sketch

On July 8, 2004 found a cast iron monument.

left monument as found, lowered monument, removed monument (explain)

On _____ placed a _____

SKETCH OF REFERENCE TIES



RAMSEY COUNTY
NAD83 (1986) DATUM

MONUMENT 27

X=542344.878 (Easting)
Y=218180.393 (Northing)

CORNER BRICK
HOUSE
No. 2756

ALL DISTANCES ARE SHOWN IN U.S. SURVEY FEET.
BEARINGS ARE FOR TIE REFERENCE PURPOSES ONLY.

Statements of evidence relative to this corner are on the following page(s).

I hereby certify that this document and the data contained herein was prepared by me or under my direct supervision this _____ day of _____, 20 ____.

SIGNATURE

Minnesota License No. _____

- Land Surveyor Professional Engineer
 County Surveyor County Engineer

OFFICE OF COUNTY SURVEYOR

County of Ramsey

I hereby certify that this document was filed in the County Surveyor's office on the _____ day of _____, 20 ____.

David D. Claypool, P.L.S., County Surveyor

By _____, Deputy

MONUMENT 27

Found a cast iron monument, down 1 in. and retied, August 23, 1974.

Checked monument, November 21, 1991.

Retied monument, December 14, 1998.

Retied monument, July 8, 2004.