

MONUMENT 2SC

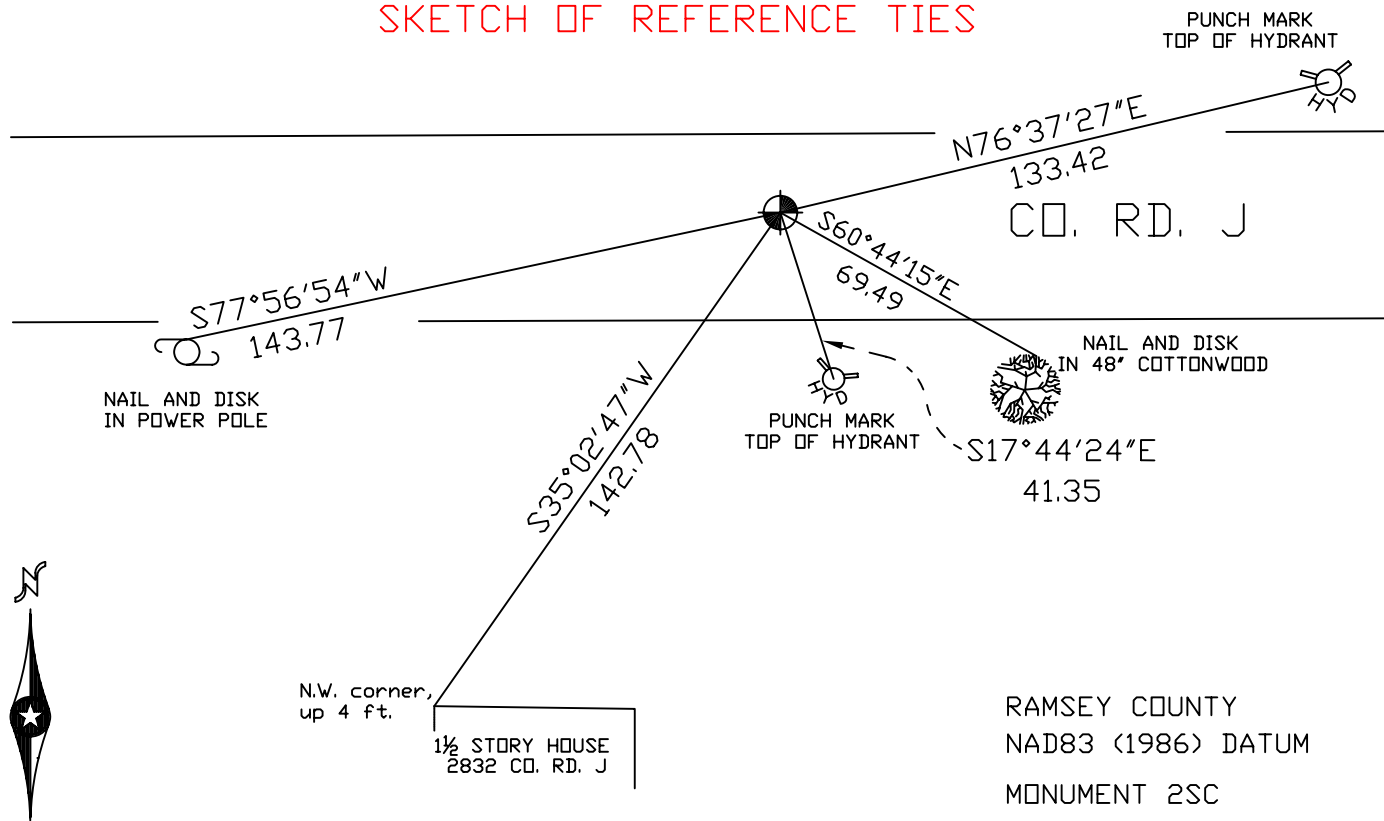
CERTIFICATE OF LOCATION OF GOVERNMENT CORNER

North Quarter Corner of Section 6, Township 30 North, Range 23 West, County of Ramsey, State of Minnesota.

At the corner location shown on the sketch

- On June 4, 2004 found a cast iron monument marked "3RD CORRECTION LINE" (2122.19 ft. east of monument 1SC).
- left monument as found, lowered monument, removed monument (explain)
- On _____ placed a _____

SKETCH OF REFERENCE TIES



ALL DISTANCES ARE SHOWN IN U.S. SURVEY FEET.
BEARINGS ARE FOR TIE REFERENCE PURPOSES ONLY.

RAMSEY COUNTY
NAD83 (1986) DATUM
MONUMENT 2SC

X=542300.065 (Easting)
Y=221596.890 (Northing)
"Closing Corner" is 0.03 ft. north.

Statements of evidence relative to this corner are on the following page(s).

I hereby certify that this document and the data contained herein was prepared by me or under my direct supervision this _____ day of _____, 20____.

SIGNATURE

Minnesota License No. _____

Land Surveyor Professional Engineer

County Surveyor County Engineer

OFFICE OF THE COUNTY SURVEYOR
County of Ramsey

I hereby certify that this document was filed in the County Surveyor's office on the _____ day of _____, 20____.

David D. Claypool, P.L.S., County Surveyor

By _____, Deputy

MONUMENT 2SC

Found iron in concrete. Found a cast iron monument, down 0.18 ft., May 3, 1975.

Tied out corner monument, June 26, 1975.

Retied monument, May 3, 1990.

Monument may be destroyed by construction during 1991.

Monument located 0.2 ft. under bituminous material. Short ties checked, (less than 100 ft.), October 10, 1993.

Removed cast iron monument and set a 20 in. cast iron monument marked, "3RD CORRECTION LINE", in concrete, 0.03 ft. south of original cast iron monument, July 28, 1995.

Tied monument 2SC, June 20, 1996.

Retied monument 2SC, June 4, 2004.