

# MONUMENT 37

## CERTIFICATE OF LOCATION OF GOVERNMENT CORNER

Center of Section 1, Township 30 North, Range 23 West, County of Ramsey, State of Minnesota.

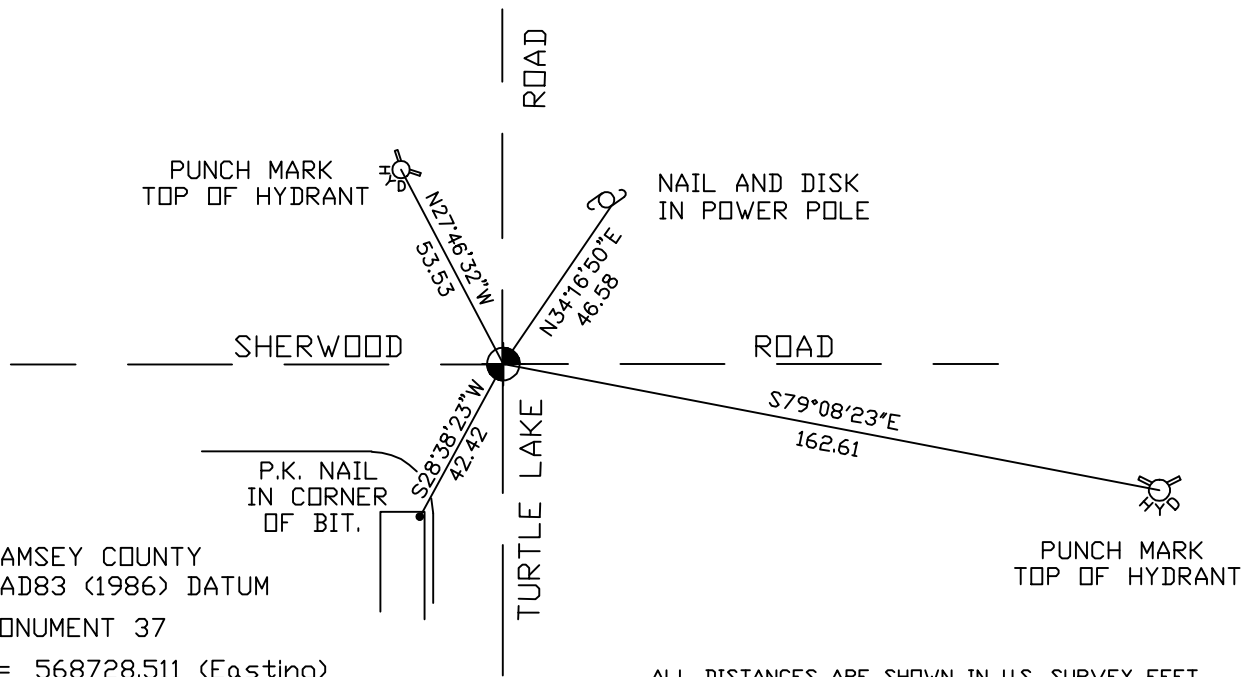
At the corner location shown on the sketch

On \_\_\_\_\_ found \_\_\_\_\_

left monument as found,  lowered monument,  removed monument (explain)

On September 18, 2005 placed a 20 in. cast iron monument within  
a cast iron manhole assembly.

### SKETCH OF REFERENCE TIES



RAMSEY COUNTY  
NAD83 (1986) DATUM  
MONUMENT 37  
X= 568728.511 (Easting)  
Y= 218401.640 (Northing)

ALL DISTANCES ARE SHOWN IN U.S. SURVEY FEET.  
BEARINGS ARE FOR TIE REFERENCE PURPOSES ONLY.

Statements of evidence relative to this corner are on the following page(s).

I hereby certify that this document and the data contained herein was prepared by me or under my direct supervision this \_\_\_\_\_ day of \_\_\_\_\_, 20\_\_\_\_.

\_\_\_\_\_  
Minnesota License No. \_\_\_\_\_  
 Land Surveyor     Professional Engineer  
 County Surveyor     County Engineer

SIGNATURE

#### OFFICE OF COUNTY SURVEYOR

County of Ramsey

I hereby certify that this document was filed in the County Surveyor's office on the \_\_\_\_\_ day of \_\_\_\_\_, 20\_\_\_\_.

David D. Claypool, P.L.S., County Surveyor

By \_\_\_\_\_, Deputy

## MONUMENT 37

**Found cast iron monument down 0.3 ft., retied monument, January 23, 1976.**

**Raised cast iron monument after construction, May 27, 1976.**

**Replaced monument after Sherwood Road construction.**

**Retied monument, July 16, 1990.**

**Retied monument, October 11, 2000.**

**Retied monument, June 9, 2004.**

**Monument removed for full depth milling operation, August 31, 2005.**

**Placed a 20 in. cast iron monument within a manhole casting assembly and tied out monument, September 18, 2005.**