

MONUMENT 39

CERTIFICATE OF LOCATION OF GOVERNMENT CORNER

Center of Section 6, Township 30 North, Range 22 West, County of Ramsey,
State of Minnesota.

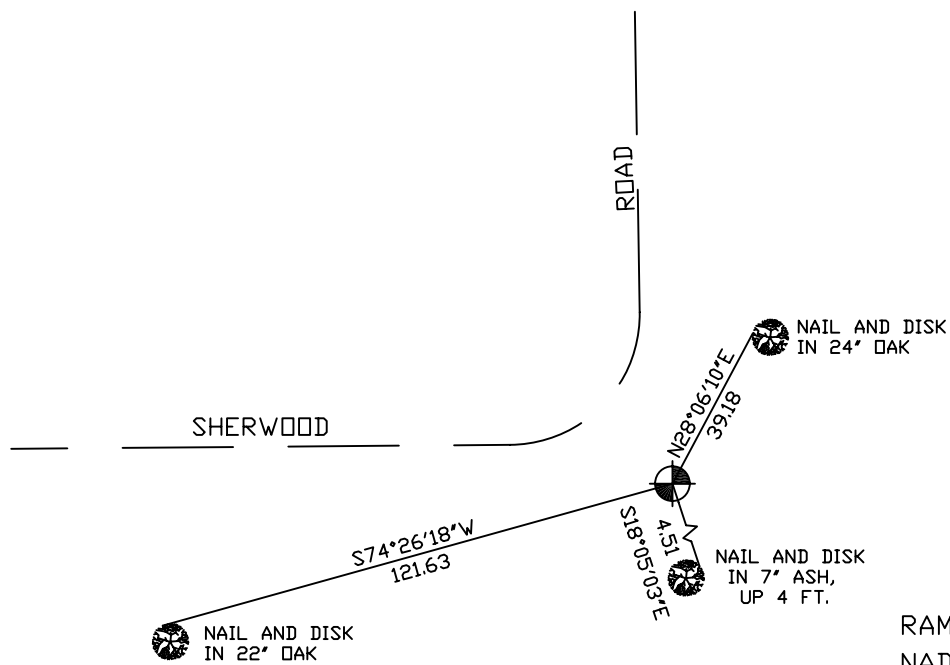
At the corner location shown on the sketch

On July 12, 2004 found a cast iron monument.

left monument as found, lowered monument, removed monument (explain)

On _____ placed a _____

SKETCH OF REFERENCE TIES



ALL DISTANCES ARE SHOWN IN U.S. SURVEY FEET.
BEARINGS ARE FOR TIE REFERENCE PURPOSES ONLY.

RAMSEY COUNTY
NAD83 (1986) DATUM
MONUMENT 39
X=573922.863 (Easting)
Y=218390.788 (Northing)

Statements of evidence relative to this corner are on the following page(s).

I hereby certify that this document and the data
contained herein was prepared by me or under
my direct supervision this _____ day
of _____, 20____.

SIGNATURE

Minnesota License No. _____

Land Surveyor Professional Engineer

County Surveyor County Engineer

OFFICE OF COUNTY SURVEYOR

County of Ramsey

I hereby certify that this document was filed in
the County Surveyor's office on the _____ day
of _____, 20____.

David D. Claypool, P.L.S., County Surveyor

By _____, Deputy

MONUMENT 39

Found a 1½ in. diameter solid iron, down 6 in., retied,
January 23, 1976.

Replaced 1½ in. solid iron with a 20 in. cast iron monument, May
21, 1976.

Tied monument, July 18, 1990.

Placed a sign and post +/-1 ft. south of monument, July 9, 1992.

Retied monument, October 11, 2000.

Retied monument, July 12, 2004.