

# MONUMENT 3SC

## CERTIFICATE OF LOCATION OF GOVERNMENT CORNER

Northeast Corner of Section 6, Township 30 North, Range 23 West,  
County of Ramsey, State of Minnesota.

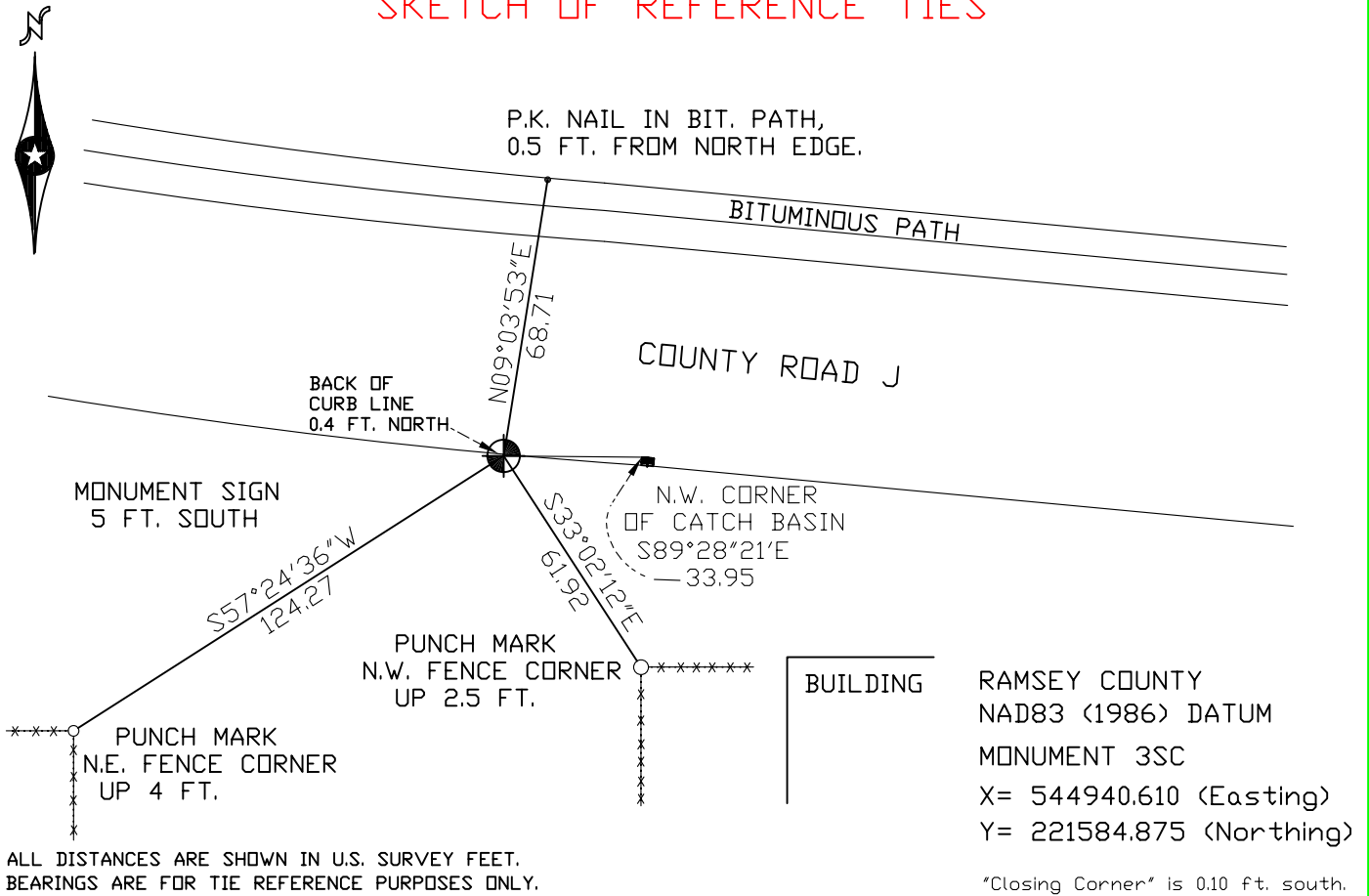
At the corner location shown on the sketch

On June 8, 2004 found a cast iron monument marked "3RD CORRECTION LINE" (2640.57 ft. east of monument 2SC).

left monument as found,  lowered monument,  removed monument (explain)

On \_\_\_\_\_ placed a \_\_\_\_\_

### SKETCH OF REFERENCE TIES



Statements of evidence relative to this corner are on the following page(s).

I hereby certify that this document and the data contained herein was prepared by me or under my direct supervision this \_\_\_\_\_ day of \_\_\_\_\_, 20\_\_\_\_.

SIGNATURE

Minnesota License No. \_\_\_\_\_

- Land Surveyor       Professional Engineer  
 County Surveyor     County Engineer

### OFFICE OF COUNTY SURVEYOR

County of Ramsey

I hereby certify that this document was filed in the County Surveyor's office on the \_\_\_\_\_ day of \_\_\_\_\_, 20\_\_\_\_.

David D. Claypool, P.L.S., County Surveyor

By \_\_\_\_\_, Deputy

## MONUMENT 3SC

Found a granite monument, flush, and retied, August 23, 1974.

Monument to be removed by construction in 1991.

Placed a spike, in position, August 3, 1994.

Set a 20 in. cast iron monument, August 10, 1994.

Set sign and post, 5 ft. south of monument, October 18, 1994.

Removed 20 in. cast iron monument and set a 20 in. cast iron standard corner (SC) monument marked, "3RD CORRECTION LINE", 0.10 ft. north of "Closing Corner", July 28, 1995.

Tied monument 3SC, December 14, 1998.

Retied monument, June 8, 2004.

Tied out monument for construction removal, June 6, 2006.