

# MONUMENT 439E

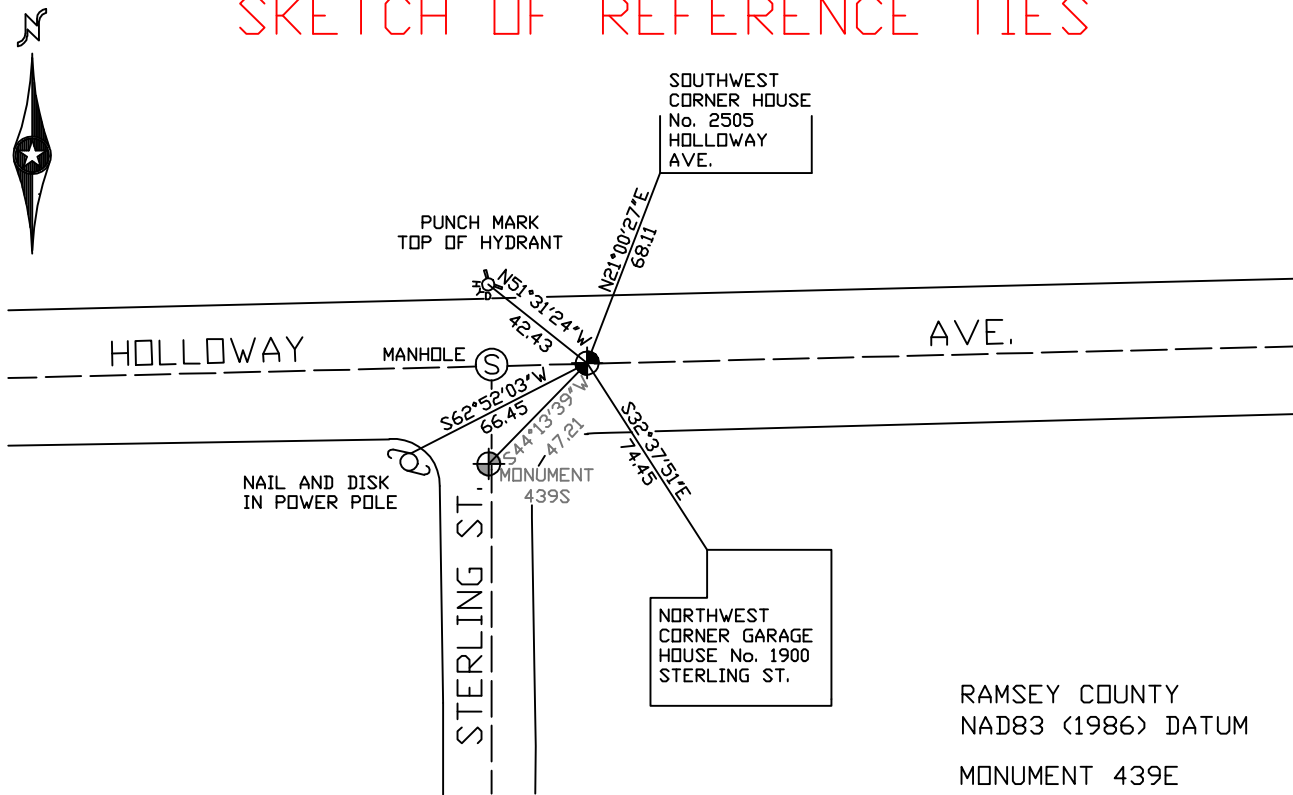
## CERTIFICATE OF LOCATION OF GOVERNMENT CORNER

Witness Corner to Center of Section 13, Township 29 North, Range 22 West, County of Ramsey, State of Minnesota.

At the corner location shown on the sketch

- On August 24, 2004 found a cast iron monument within a cast iron manhole assembly.
- left monument as found,  lowered monument,  removed monument (explain)
- On \_\_\_\_\_ placed a \_\_\_\_\_

## SKETCH OF REFERENCE TIES



RAMSEY COUNTY  
NAD83 (1986) DATUM

MONUMENT 439E

ALL DISTANCES ARE SHOWN IN U.S. SURVEY FEET.  
BEARINGS ARE FOR TIE REFERENCE PURPOSES ONLY.

X=600530.652 (Easting)  
Y=176179.256 (Northing)

Statements of evidence relative to this corner are on the following page(s).

I hereby certify that this document and the data contained herein was prepared by me or under my direct supervision this \_\_\_\_\_ day of \_\_\_\_\_, 20\_\_\_\_.

SIGNATURE

- Minnesota License No. \_\_\_\_\_
- Land Surveyor       Professional Engineer
- County Surveyor     County Engineer

OFFICE OF COUNTY SURVEYOR

County of Ramsey

I hereby certify that this document was filed in the County Surveyor's office on the \_\_\_\_ day of \_\_\_\_\_, 20\_\_\_\_.

David D. Claypool, P.L.S., County Surveyor

By \_\_\_\_\_, Deputy

## MONUMENT 439E

**Found a manhole at monument location. Details of irons found to determine corner location in Survey Book No. 1. Placed witness corner cast iron monument 33 ft. east. No date given.**

**Retied monument, July, 1989.**

**Retied monument, October 18, 2000.**

**Set cast iron manhole assembly over monument and retied,  
August 24, 2004.**