

MONUMENT 44

CERTIFICATE OF LOCATION OF GOVERNMENT CORNER

East Quarter Corner of Section 4, Township 30 North, Range 22 West,
County of Ramsey, State of Minnesota.

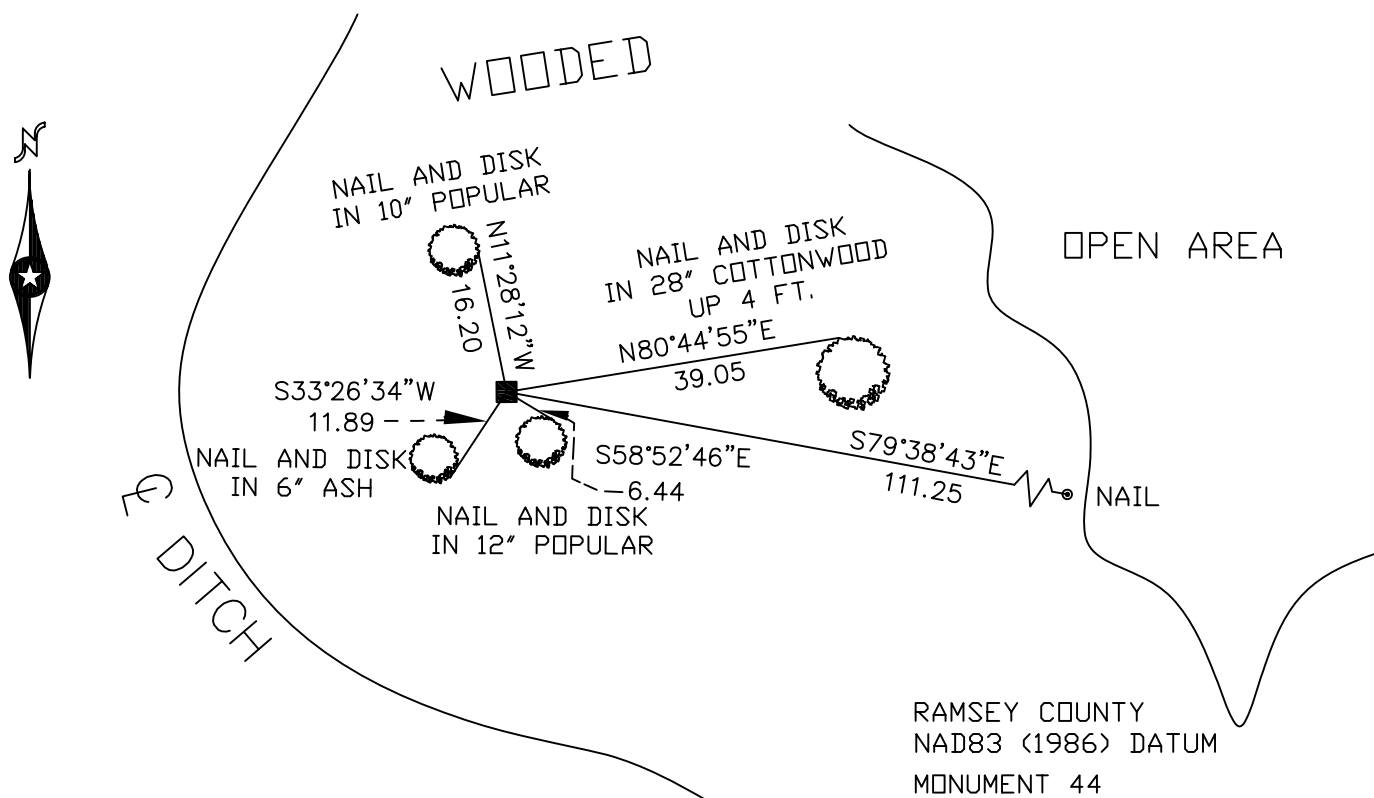
At the corner location shown on the sketch

On December 16, 2004 found a granite monument.

left monument as found, lowered monument, removed monument (explain)

ON _____ placed a _____

SKETCH OF REFERENCE TIES



RAMSEY COUNTY
NAD83 (1986) DATUM
MONUMENT 44
X=587064.013 (Easting)
Y=218435.874 (Northing)

ALL DISTANCES ARE SHOWN IN U.S. SURVEY FEET.
BEARINGS ARE FOR TIE REFERENCE PURPOSES ONLY.

Statements of evidence relative to this corner are on the following page(s).

I hereby certify that this document and the data contained herein was prepared by me or under my direct supervision this _____ day of _____, 20____.

SIGNATURE

Minnesota License No. _____

- Land Surveyor Professional Engineer
 County Surveyor County Engineer

OFFICE OF COUNTY SURVEYOR

County of Ramsey

I hereby certify that this document was filed in the County Surveyor's office on the _____ day of _____, 20____.

David D. Claypool, P.L.S., County Surveyor

By _____, Deputy

MONUMENT 44

Found granite monument, up 6 in., tipped west, June 6, 1977.

Tied granite monument, flush, July 28, 1981.

Granite monument, up 5 in., set sign and post 8 in. north of monument, retied, October 27, 1999.

Retied granite monument, December 16, 2004.