

MONUMENT 455E

CERTIFICATE OF LOCATION OF GOVERNMENT CORNER

Meander Corner on the South line of Section 17, Township 29 North, Range 22 West, County of Ramsey, State of Minnesota.

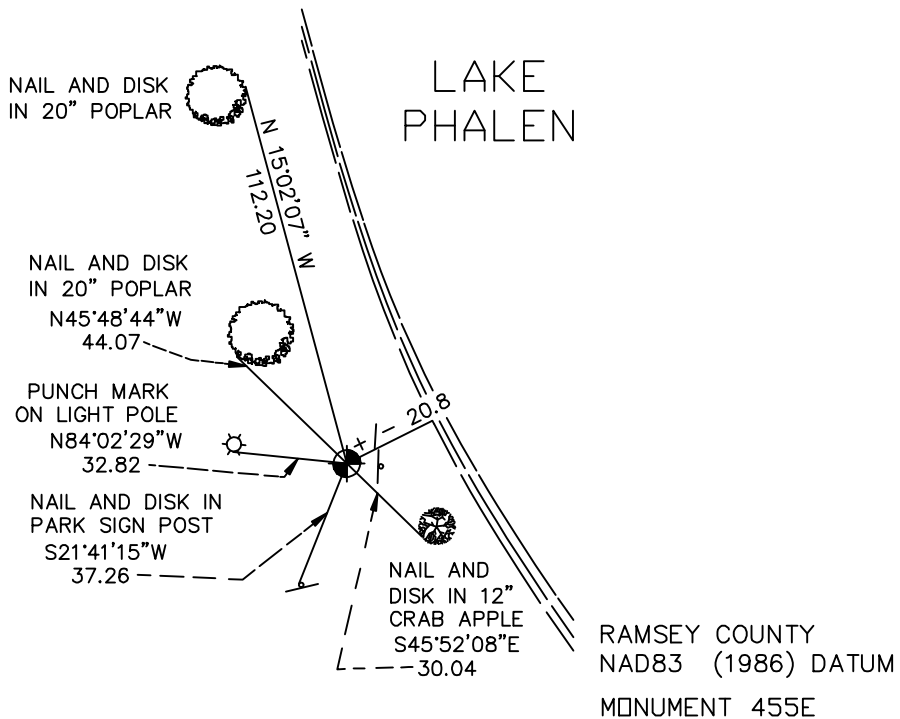
At the corner location shown on the sketch

On _____ found _____

left monument as found, lowered monument, removed monument (explain)

On November 8, 2004 placed a 20 in. cast iron monument with sign and post.

SKETCH OF REFERENCE TIES



ALL DISTANCES ARE SHOWN IN U.S. SURVEY FEET.
BEARINGS ARE FOR TIE REFERENCE PURPOSES ONLY.

RAMSEY COUNTY
NAD83 (1986) DATUM
MONUMENT 455E
X= 583837.806 (Easting)
Y= 173414.231 (Northing)

Statements of evidence relative to this corner are on the following page(s).

I hereby certify that this document and the data contained herein was prepared by me or under my direct supervision this _____ day of _____, 20____.

SIGNATURE

Minnesota License No. _____

- Land Surveyor Professional Engineer
 County Surveyor County Engineer

OFFICE OF COUNTY SURVEYOR

County of Ramsey

I hereby certify that this document was filed in the County Surveyor's office on the ____ day of _____, 20____.

David D. Claypool, P.L.S., County Surveyor

By _____, Deputy

MONUMENT 455E

No visible monument; dug a 4 ft. x 4 ft. hole down 7.2 ft. to white sand and found granite monument westerly +/- 2 ft.; laying down, August 16, 1989.

Determined mathematical location and placed P.K. nails, August 23, 1989.

Placed 20 in. cast iron monument; tied out, May 11, 1990.

Retied monument, April 14, 2003.

Tied out monument for impending construction activity in area, April 22, 2004.

Placed a 20 in. cast iron monument; sign placed 1.5 ft. east of monument ; tied out, November 8, 2004.