

MONUMENT 461

CERTIFICATE OF LOCATION OF GOVERNMENT CORNER Southwest Corner of Section 13, Township 29 North, Range 22 West, County of Ramsey, State of Minnesota.

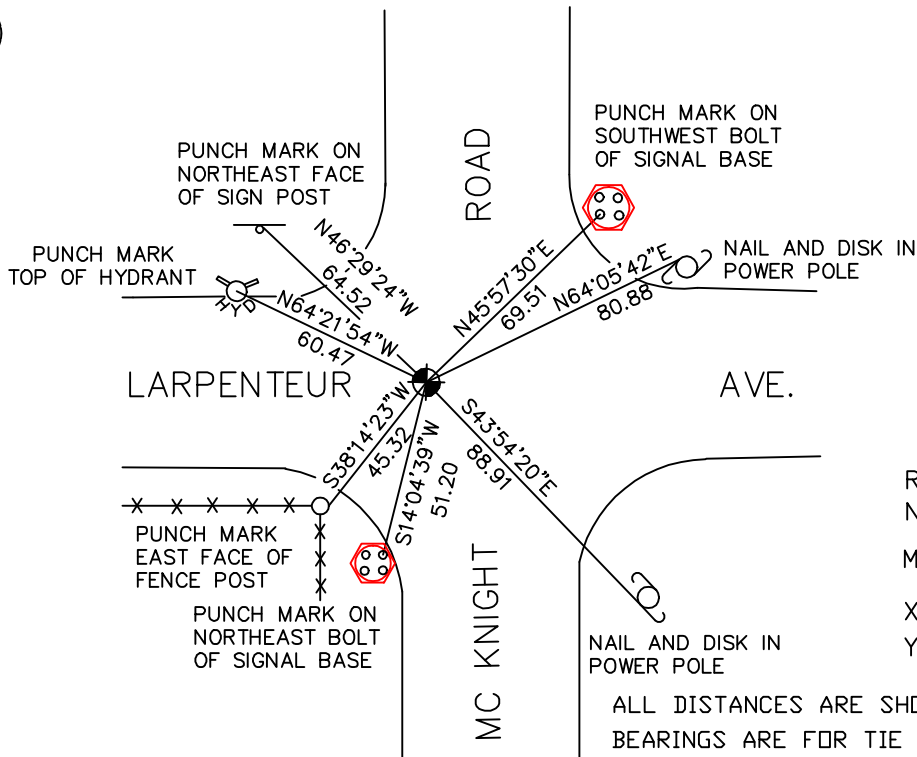
At the corner location shown on the sketch

On July 19, 2004 found a cast iron monument within a cast iron
manhole assembly.

left monument as found, lowered monument, removed monument (explain)

On _____ placed a _____

SKETCH OF REFERENCE TIES



RAMSEY COUNTY
NAD83 (1986) DATUM
MONUMENT 461
X=597869.274 (Easting)
Y=173471.418 (Northing)

ALL DISTANCES ARE SHOWN IN U.S. SURVEY FEET.
BEARINGS ARE FOR TIE REFERENCE PURPOSES ONLY.

Statements of evidence relative to this corner are on the following page(s).

I hereby certify that this document and the data contained herein was prepared by me or under my direct supervision this _____ day of _____, 20____.

SIGNATURE

Minnesota License No. _____

- Land Surveyor Professional Engineer
 County Surveyor County Engineer

OFFICE OF COUNTY SURVEYOR

County of Ramsey

I hereby certify that this document was filed in the County Surveyor's office on the ____ day of _____, 20____.

David D. Claypool, P.L.S., County Surveyor

By _____, Deputy

MONUMENT 461

Found granite monument; retied, July 17, 1984.

Monument destroyed by reconstruction, Summer of 1988.

Placed 20 in. cast iron monument, October 27, 1988.

Retied monument, June 8, 1990.

Retied monument, November 7, 2002.

Monument retied, July 19, 2004.