

MONUMENT 4SC

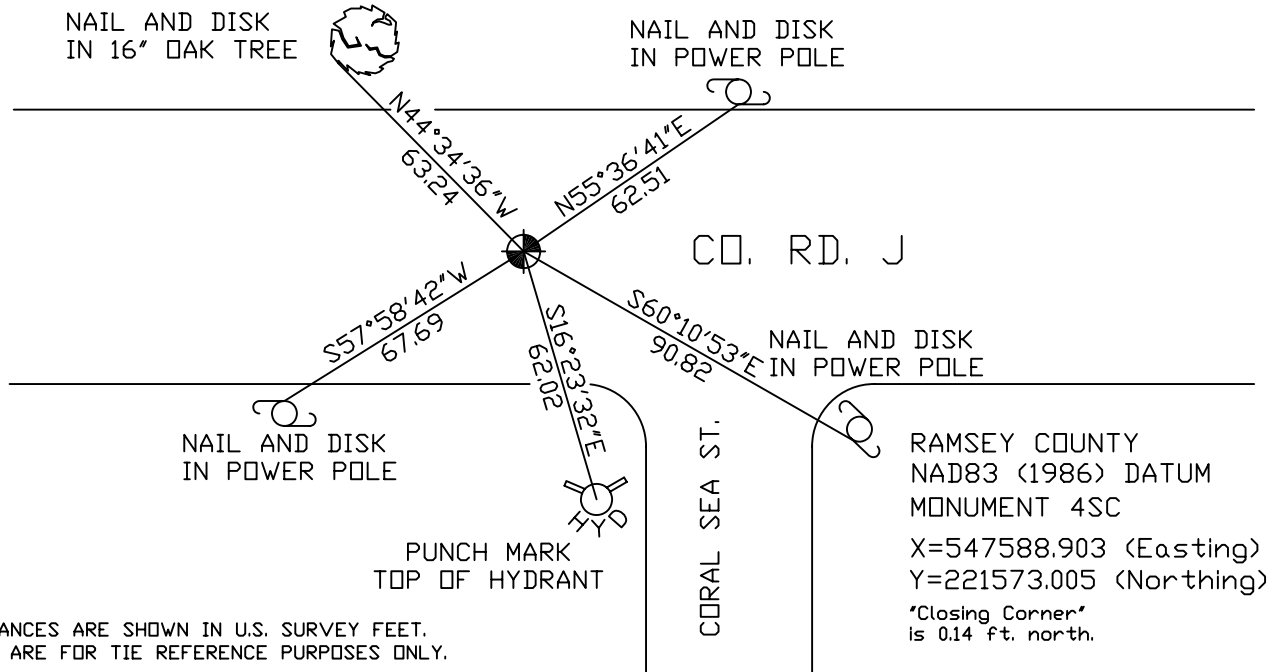
CERTIFICATE OF LOCATION OF GOVERNMENT CORNER

North Quarter Corner of Section 5, Township 30 North,
Range 23 West, County of Ramsey, State of Minnesota.

At the corner location shown on the sketch

- On June 8, 2004 found a cast iron monument marked "3RD CORRECTION LINE" (2648.32 ft. east of monument 3SC).
- left monument as found, lowered monument, removed monument (explain)
- On _____ placed a _____

SKETCH OF REFERENCE TIES



Statements of evidence relative to this corner are on the following page(s).

I hereby certify that this document and the data contained herein was prepared by me or under my direct supervision this _____ day of _____, 20____.

SIGNATURE

Minnesota License No. _____

- Land Surveyor Professional Engineer
 County Surveyor County Engineer

OFFICE OF COUNTY SURVEYOR

County of Ramsey

I hereby certify that this document was filed in the County Surveyor's office on the ____ day of _____, 20____.

David D. Claypool, P.L.S., County Surveyor

By _____, Deputy

MONUMENT 4SC

Found iron in concrete. Found granite monument, down 0.57 ft.; placed a short (4 3/8 in.) cast iron monument, July 31, 1975.

Retied cast iron monument, December 9, 1975.

Monument to be removed during construction in 1991.

Relocated position and tied out, September 4, 1991.

Removed 20 in. cast iron monument. Set a cast iron monument, marked "3RD CORRECTION LINE", in concrete, 0.14 ft. south of original granite monument location, July 26, 1995.

Tied monument 4SC, December 14, 1998.

Retied monument 4SC, June 8, 2004.

Tied out monument 4SC for removal during road reconstruction, June 6, 2006.