

MONUMENT 52

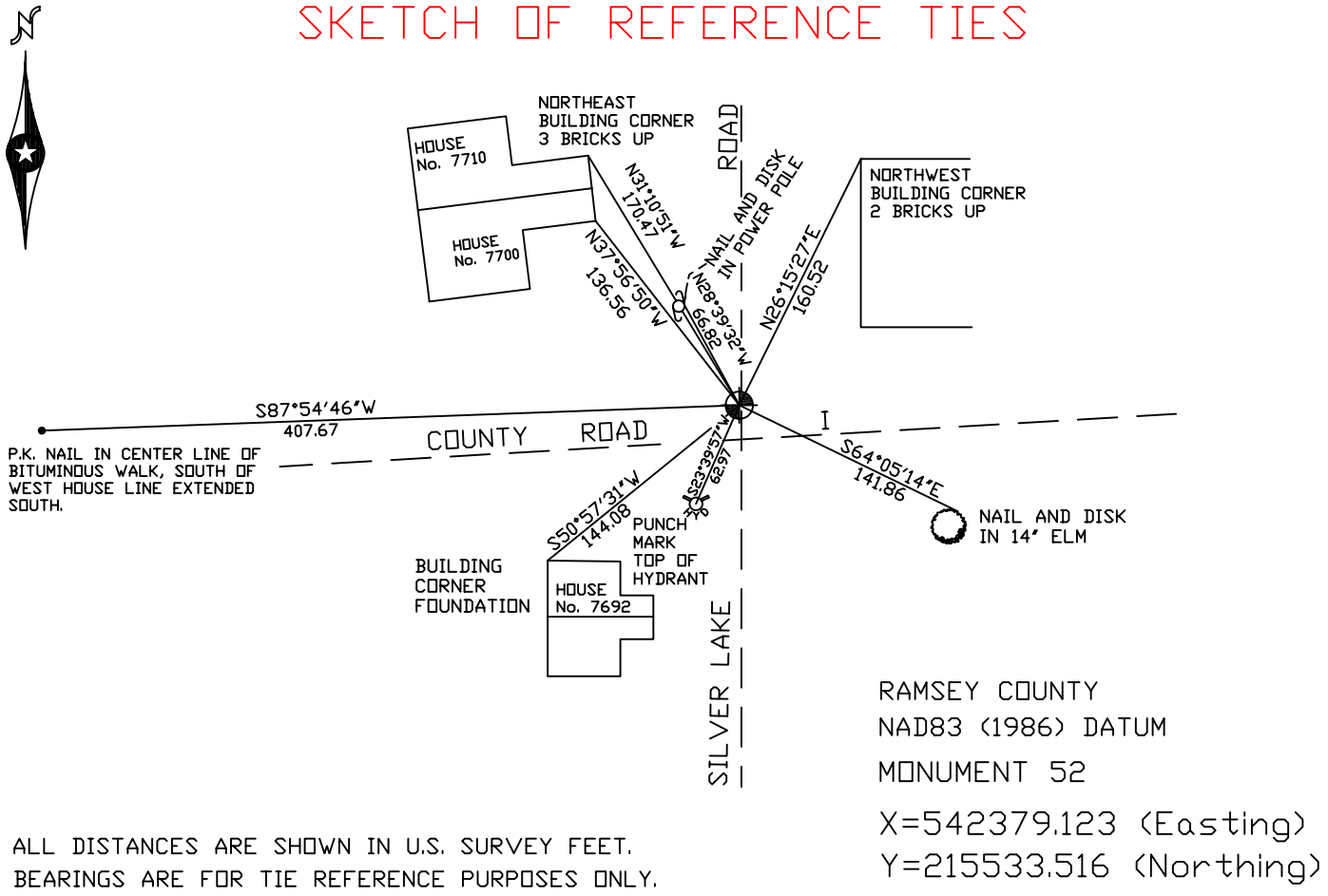
CERTIFICATE OF LOCATION OF GOVERNMENT CORNER

South Quarter Corner of Section 6, Township 30 North, Range 23 West, County of Ramsey, State of Minnesota.

At the corner location shown on the sketch

- On December 29, 2004 found a cast iron monument, within a cast iron manhole assembly.
- left monument as found, lowered monument, removed monument (explain)
- On _____ placed a _____

SKETCH OF REFERENCE TIES



Statements of evidence relative to this corner are on the following page(s).

I hereby certify that this document and the data contained herein was prepared by me or under my direct supervision this _____ day of _____, 20____.

SIGNATURE _____

Minnesota License No. _____

Land Surveyor Professional Engineer

County Surveyor County Engineer

OFFICE OF COUNTY SURVEYOR

County of Ramsey

I hereby certify that this document was filed in the County Surveyor's office on the _____ day of _____, 20____.

David D. Claypool, P.L.S., County Surveyor

By _____, Deputy

MONUMENT 52

Found a cast iron monument flush, and retied, August 8, 1974.

Retied monument, down 0.15 ft., February 4, 1993.

Retied monument, September 5, 2003.

Cast iron monument lowered for milling operation,
August 3, 2004.

Cast iron manhole assembly was placed over monument, September 1, 2004.

Retied monument, December 29, 2004.