

MONUMENT 59

CERTIFICATE OF LOCATION OF GOVERNMENT CORNER

Southwest Corner of Section 2, Township 30 North, Range 23 West,
County of Ramsey, State of Minnesota.

At the corner location shown on the sketch

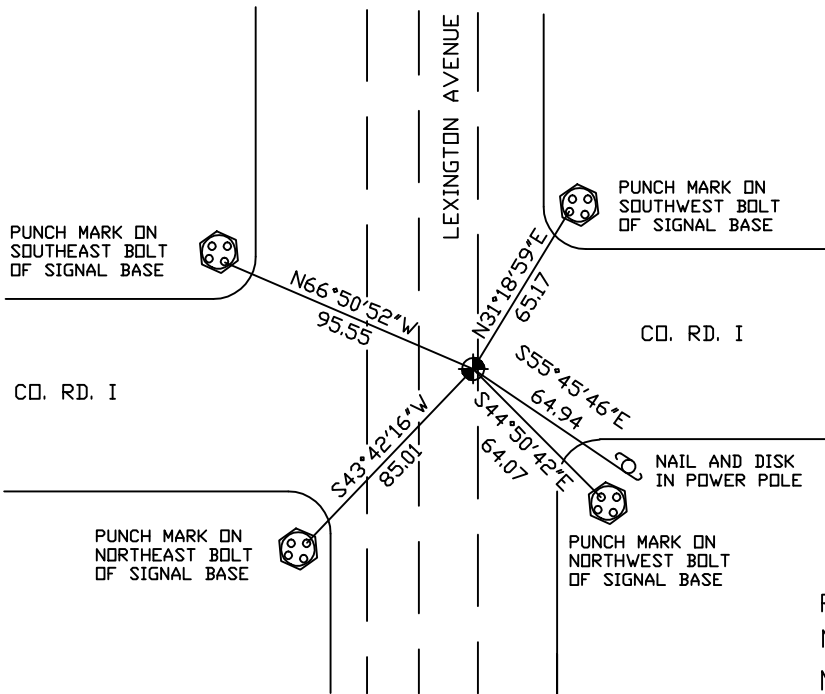
On August 28, 2004 found a cast iron monument, within a cast iron
manhole assembly.

left monument as found, lowered monument, removed monument (explain)

On _____ placed a _____



SKETCH OF REFERENCE TIES



RAMSEY COUNTY
NAD83 (1986) DATUM
MONUMENT 59

ALL DISTANCES ARE SHOWN IN U.S. SURVEY FEET.
BEARINGS ARE FOR TIE REFERENCE PURPOSES ONLY.

Y=560845.139 (Easting)
X=215658.748 (Northing)

Statements of evidence relative to this corner are on the following page(s).

I hereby certify that this document and the data
contained herein was prepared by me or under
my direct supervision this _____ day
of _____, 20____.

SIGNATURE

Minnesota License No. _____

- Land Surveyor Professional Engineer
 County Surveyor County Engineer

OFFICE OF COUNTY SURVEYOR

County of Ramsey

I hereby certify that this document was filed in
the County Surveyor's office on the _____ day
of _____, 20____.

David D. Claypool, P.L.S., County Surveyor

By _____, Deputy

MONUMENT 59

**Found a granite monument and set a cast iron cap monument,
January 27, 1975.**

**Tied out and removed cast iron cap monument for Construction
Department, April 30, 1990.**

**Replaced the granite monument with a 20 in. cast iron monument,
August 21, 1991.**

Placed concrete around monument and tied out, August 30, 1991.

Retied monument, March 21, 2001.

**Monument lowered for the milling of Lexington Avenue and Co. Rd. I
to a point 1.2 ft. below bituminous surface. Placed a cast iron manhole
assembly around cast iron monument. No date given in field book.**

Retied monument, August 28, 2004.