

MONUMENT 68

CERTIFICATE OF LOCATION OF GOVERNMENT CORNER

South Quarter Corner of Section 4, Township 30 North, Range 22 West, County of Ramsey, State of Minnesota.

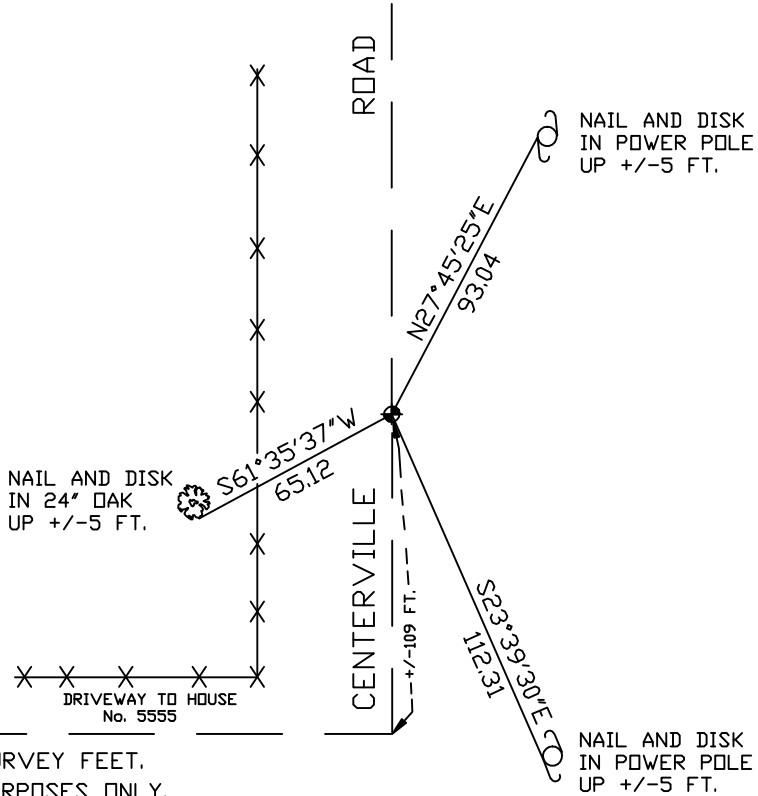
At the corner location shown on the sketch

On July 12, 2004 found a cast iron monument.

left monument as found, lowered monument, removed monument (explain)

On _____ placed a _____

SKETCH OF REFERENCE TIES



RAMSEY COUNTY
 NAD83 (1986) DATUM
 MONUMENT 68
 X=584427.762 (Easting)
 Y=215778.855 (Northing)

ALL DISTANCES ARE SHOWN IN U.S. SURVEY FEET.
 BEARINGS ARE FOR TIE REFERENCE PURPOSES ONLY.

Statements of evidence relative to this corner are on the following page(s).

I hereby certify that this document and the data contained herein was prepared by me or under my direct supervision this _____ day of _____, 20____.

 SIGNATURE
 Minnesota License No. _____
 Land Surveyor Professional Engineer
 County Surveyor County Engineer

OFFICE OF COUNTY SURVEYOR
 County of Ramsey

I hereby certify that this document was filed in the County Surveyor's office on the _____ day of _____, 20____.

David D. Claypool, P.L.S., County Surveyor
 By _____, Deputy

MONUMENT 68

Found 1 ¼ in. bolt with nut, 2 ft. long and down 0.3 ft.; found 8 in. railroad spike down 1.0 ft.; found possible granite monument tipped at a 45 degree angle, down 1.5 ft.; did not try to upright. Placed a cast iron monument in the same place as 1 ¼ in. bolt, flush with pavement, May 17, 1974.

Retied monument, July 3, 1974.

Monument removed for construction department, 1989.

Reset a 20 in. cast iron monument, flush, November 24, 1992.

Retied monument, January 25, 1993.

Retied monument, November 15, 1999.

Retied monument, July 12, 2004.