

# MONUMENT 69

## CERTIFICATE OF LOCATION OF GOVERNMENT CORNER

Northeast Corner of Section 9, Township 30 North, Range 22  
West, County of Ramsey, State of Minnesota.

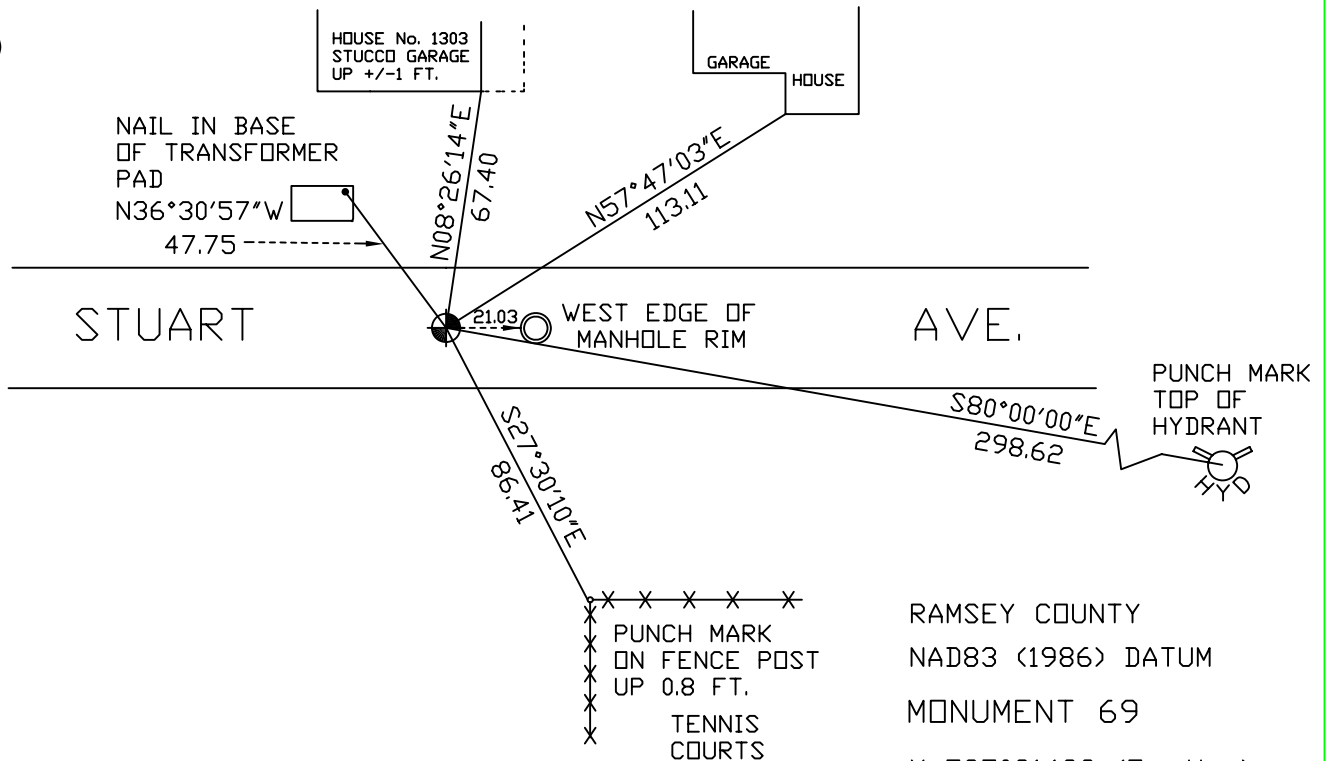
At the corner location shown on the sketch

On September 26, 2004 found a cast iron monument.

left monument as found,  lowered monument,  removed monument (explain)

On \_\_\_\_\_ placed a \_\_\_\_\_

### SKETCH OF REFERENCE TIES



ALL DISTANCES ARE SHOWN IN U.S. SURVEY FEET.  
BEARINGS ARE FOR TIE REFERENCE PURPOSES ONLY.

Statements of evidence relative to this corner are on the following page(s).

I hereby certify that this document and the data contained herein was prepared by me or under my direct supervision this \_\_\_\_\_ day of \_\_\_\_\_, 20\_\_\_\_.

SIGNATURE

Minnesota License No. \_\_\_\_\_

Land Surveyor     Professional Engineer

County Surveyor     County Engineer

OFFICE OF COUNTY SURVEYOR

County of Ramsey

I hereby certify that this document was filed in the County Surveyor's office on the \_\_\_\_\_ day of \_\_\_\_\_, 20\_\_\_\_.

David D. Claypool, P.L.S., County Surveyor

By \_\_\_\_\_, Deputy

## MONUMENT 69

Found a 2 in. pipe over a granite monument. Granite monument down 2.4 ft; set a 20 in. cast iron monument, flush with the surface, June 19, 1974.

Development removed monument; set a 20 in. cast iron monument, flush, 1977.

Retied monument, down +/-0.1 ft., April 12, 1990.

Retied monument, down +/-0.1 ft., November 15, 1999.

Retied monument, September 26, 2004.