

MONUMENT 75

CERTIFICATE OF LOCATION OF GOVERNMENT CORNER

Southeast Corner of Section 1, Township 30 North, Range 22
West, County of Ramsey, State of Minnesota.

At the corner location shown on the sketch

On October 27, 2004 found a granite monument.

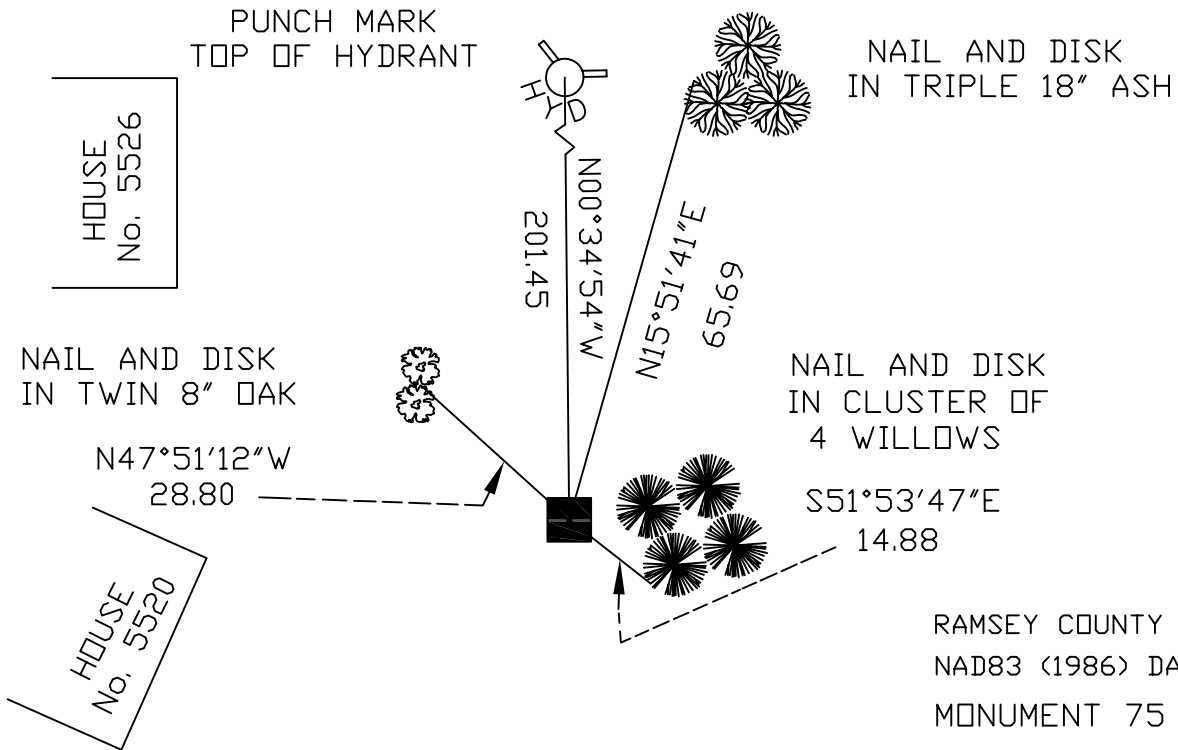
left monument as found, lowered monument, removed monument (explain)

On _____ placed a _____

SKETCH OF REFERENCE TIES



JENNI LANE



ALL DISTANCES ARE SHOWN IN U.S. SURVEY FEET.
BEARINGS ARE FOR TIE REFERENCE PURPOSES ONLY.

RAMSEY COUNTY
NAD83 (1986) DATUM
MONUMENT 75
X=602980.365 (Easting)
Y=215982.089 (Northing)

Statements of evidence relative to this corner are on the following page(s).

I hereby certify that this document and the data contained herein was prepared by me or under my direct supervision this _____ day of _____, 20____.

SIGNATURE

Minnesota License No. _____

Land Surveyor Professional Engineer
 County Surveyor County Engineer

OFFICE OF COUNTY SURVEYOR
County of Ramsey

I hereby certify that this document was filed in the County Surveyor's office on the _____ day of _____, 20____.

David D. Claypool, P.L.S., County Surveyor
By _____, Deputy

MONUMENT 75

Found a granite monument flush, retied, 1976.

Retied monument, December 7, 1999.

Retied monument, October 27, 2004.