

# MONUMENT 93

## CERTIFICATE OF LOCATION OF GOVERNMENT CORNER

Center of Section 9, Township 30 North, Range 22 West, County of Ramsey, State of Minnesota.

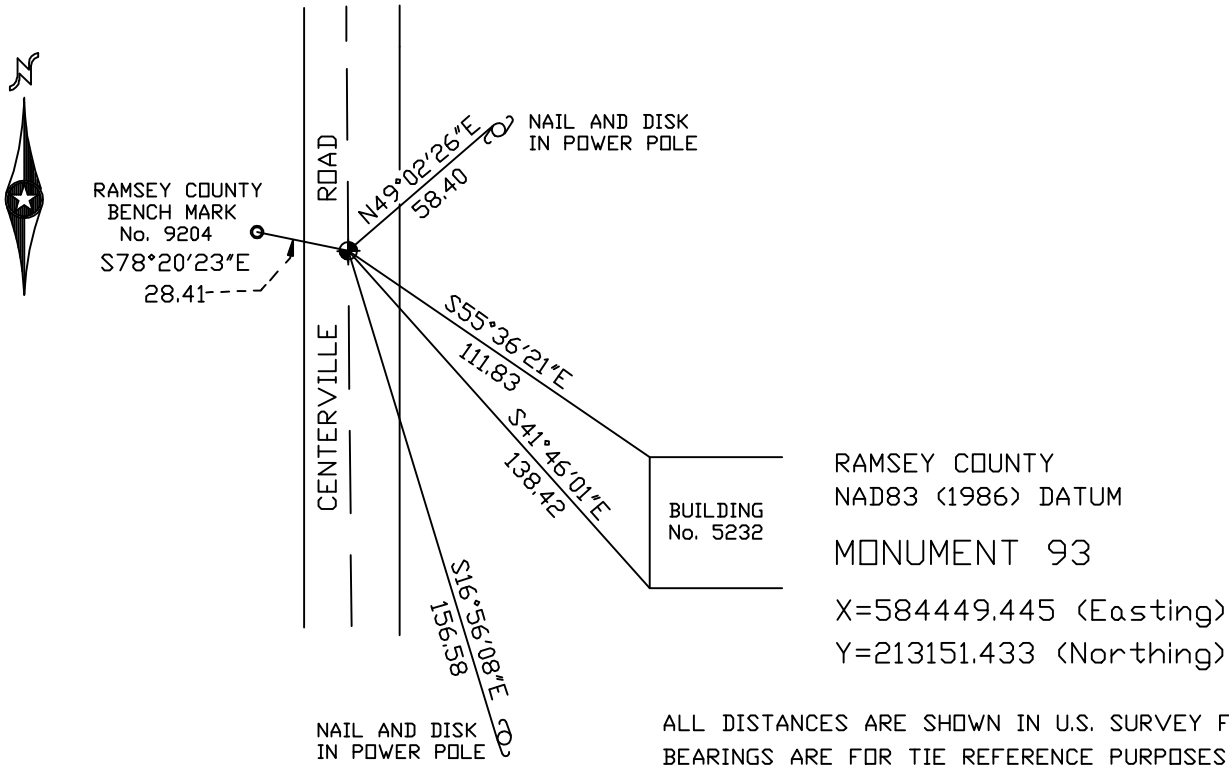
At the corner location shown on the sketch

On October 5, 2004 found a cast iron monument.

left monument as found,  lowered monument,  removed monument (explain)

On \_\_\_\_\_ placed a \_\_\_\_\_

## SKETCH OF REFERENCE TIES



Statements of evidence relative to this corner are on the following page(s).

I hereby certify that this document and the data contained herein was prepared by me or under my direct supervision this \_\_\_\_\_ day of \_\_\_\_\_, 20\_\_\_\_.

\_\_\_\_\_  
SIGNATURE  
Minnesota License No. \_\_\_\_\_  
 Land Surveyor     Professional Engineer  
 County Surveyor     County Engineer

OFFICE OF COUNTY SURVEYOR

County of Ramsey

I hereby certify that this document was filed in the County Surveyor's office on the \_\_\_\_\_ day of \_\_\_\_\_, 20\_\_\_\_.

David D. Claypool, P.L.S., County Surveyor

By \_\_\_\_\_, Deputy

## MONUMENT 93

**Found a cast iron monument down 0.1 ft., May 23, 1974.**

**Retied monument, July 2, 1974.**

**Removed monument for construction, May, 1989.**

**Reset a 20 in. cast iron monument, November 24, 1992.**

**Retied monument, January 26, 1993.**

**Retied monument, November 15, 1999.**

**Retied monument, October 5, 2004.**