

MONUMENT 95N

CERTIFICATE OF LOCATION OF GOVERNMENT CORNER

North Sixteenth Corner between Section 9 and Section 10, Township 30 North, Range 22 West, County of Ramsey, State of Minnesota.

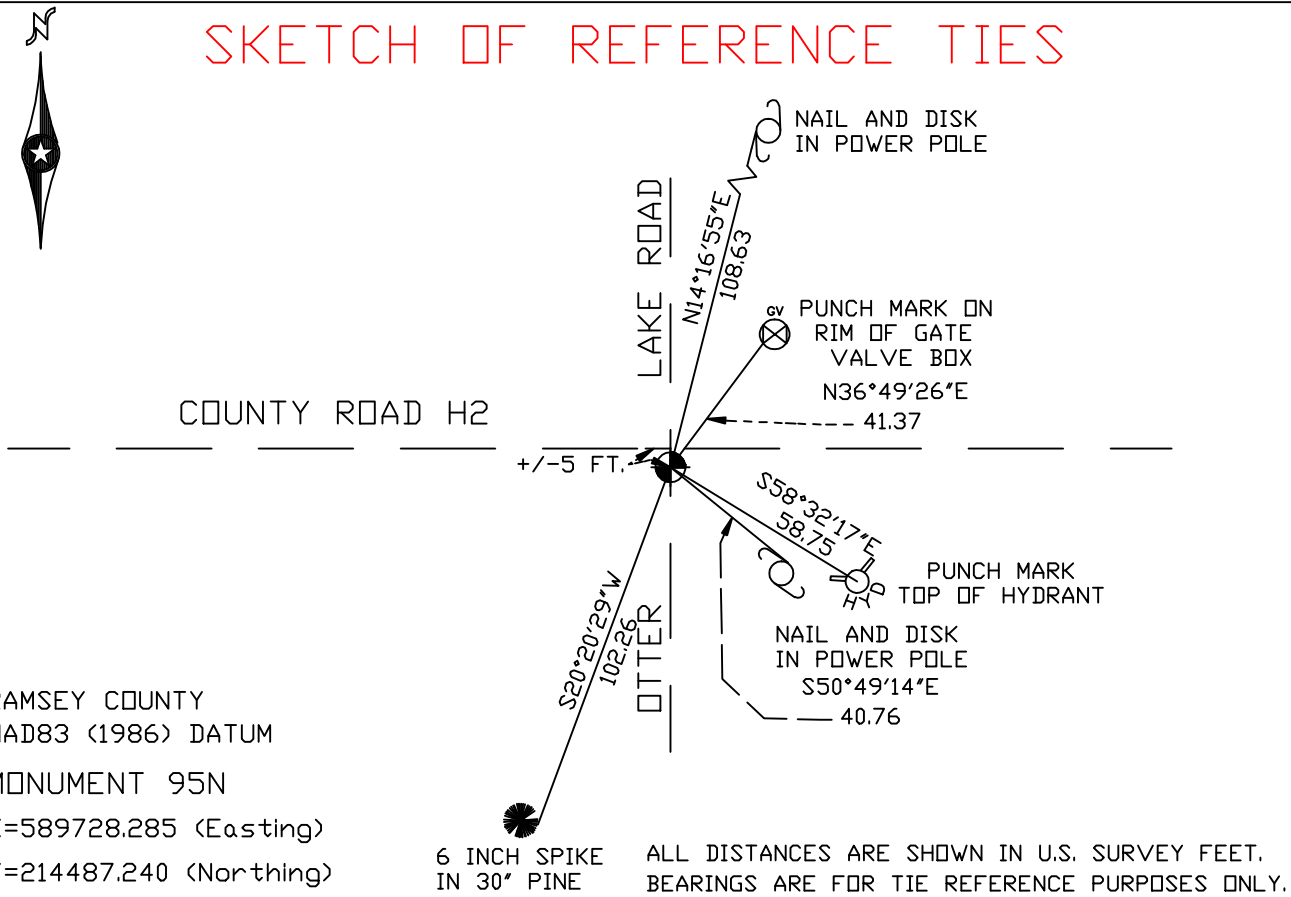
At the corner location shown on the sketch

On October 26, 2004 found a cast iron monument within a cast iron manhole assembly.

left monument as found, lowered monument, removed monument (explain)

On _____ placed a _____

SKETCH OF REFERENCE TIES



RAMSEY COUNTY
 NAD83 (1986) DATUM
 MONUMENT 95N
 X=589728.285 (Easting)
 Y=214487.240 (Northing)

6 INCH SPIKE
 IN 30' PINE

ALL DISTANCES ARE SHOWN IN U.S. SURVEY FEET.
 BEARINGS ARE FOR TIE REFERENCE PURPOSES ONLY.

Statements of evidence relative to this corner are on the following page(s).

I hereby certify that this document and the data contained herein was prepared by me or under my direct supervision this _____ day of _____, 20____.

 SIGNATURE
 Minnesota License No. _____
 Land Surveyor Professional Engineer
 County Surveyor County Engineer

OFFICE OF COUNTY SURVEYOR
 County of Ramsey

I hereby certify that this document was filed in the County Surveyor's office on the _____ day of _____, 20____.

David D. Claypool, P.L.S., County Surveyor
 By _____, Deputy

MONUMENT 95N

Placed a 20 in. cast iron monument; no date given in book.

**Cast iron monument gone; found bolt spike and dug for cast iron monument; found a $\frac{3}{4}$ in. open iron pipe down +/- 0.9 ft.
Set a 20 in. cast iron monument and tied out, September 3, 1993.**

Lowered cast iron monument 18 in., July 30, 1998.

**Set a cast iron manhole assembly over a 20 in. cast iron monument,
August 31, 1998.**

Retied monument and adjusted, April 14 and 21, 1999.

Retied monument, October 26, 2004.