

# MONUMENT 95

## CERTIFICATE OF LOCATION OF GOVERNMENT CORNER

Center of Section 10, Township 30 North, Range 22 West, County of Ramsey, State of Minnesota.

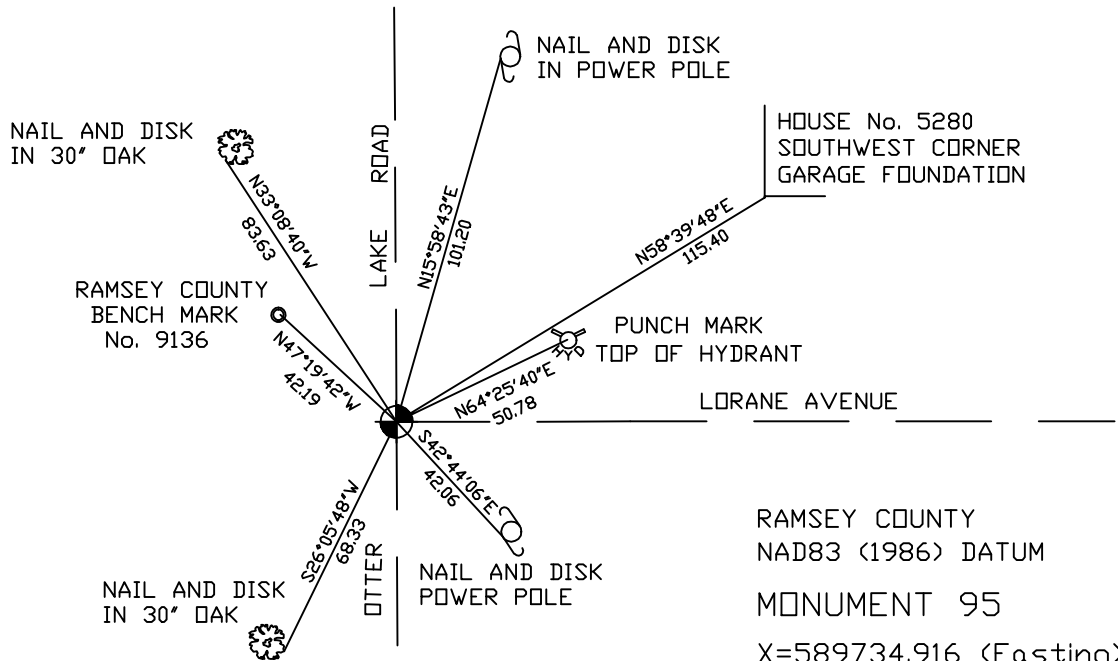
At the corner location shown on the sketch

On November 15, 2004 found a cast iron monument.

left monument as found,  lowered monument,  removed monument (explain)

On \_\_\_\_\_ placed a \_\_\_\_\_

## SKETCH OF REFERENCE TIES



RAMSEY COUNTY  
NAD83 (1986) DATUM  
MONUMENT 95  
X=589734.916 (Easting)  
Y=213178.200 (Northing)

ALL DISTANCES ARE SHOWN IN U.S. SURVEY FEET.  
BEARINGS ARE FOR TIE REFERENCE PURPOSES ONLY.

Statements of evidence relative to this corner are on the following page(s).

I hereby certify that this document and the data contained herein was prepared by me or under my direct supervision this \_\_\_\_\_ day of \_\_\_\_\_, 20\_\_\_\_.

SIGNATURE

Minnesota License No. \_\_\_\_\_  
 Land Surveyor     Professional Engineer  
 County Surveyor     County Engineer

OFFICE OF COUNTY SURVEYOR

County of Ramsey

I hereby certify that this document was filed in the County Surveyor's office on the \_\_\_\_\_ day of \_\_\_\_\_, 20\_\_\_\_.

David D. Claypool, P.L.S., County Surveyor

By \_\_\_\_\_, Deputy

## MONUMENT 95

**Found a granite monument, down 0.6 ft.; placed a cast iron cap and bolt monument in concrete over granite monument, May 21, 1974.**

**Retied monument, July 3, 1974.**

**Removed cap for milling project, 1989. After milling, granite monument is down +/- 0.95 ft.; placed an 0.8 ft. custom welded cast iron monument, September 25, 1989.**

**Retied monument, January 26, 1993.**

**Retied monument, April 14, 1999.**

**Retied monument, November 15, 2004.**